

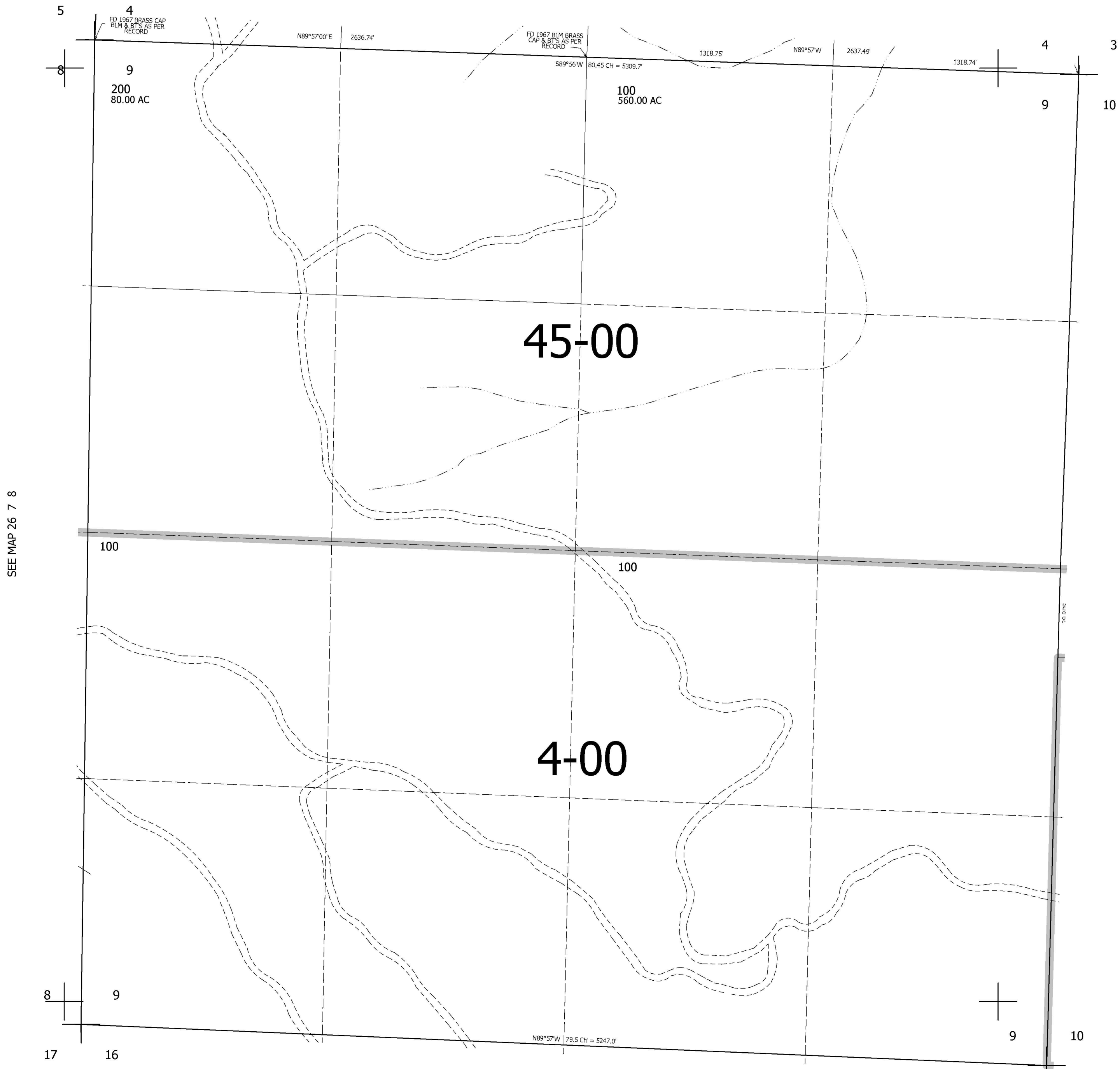
THIS MAP WAS PREPARED FOR ASSESSMENT PURPOSE ONLY.

SEC.9 T.26S. R.7W. W.M.
DOUGLAS COUNTY
1" = 400'

REVISED ON

26 7 9

SEE MAP 26 7 4



SEE MAP 26 7 8

SEE MAP 26 7 10

CANCELLED NO'S

616,000

SEE MAP 26 7 16

4,116,000

26 7 9