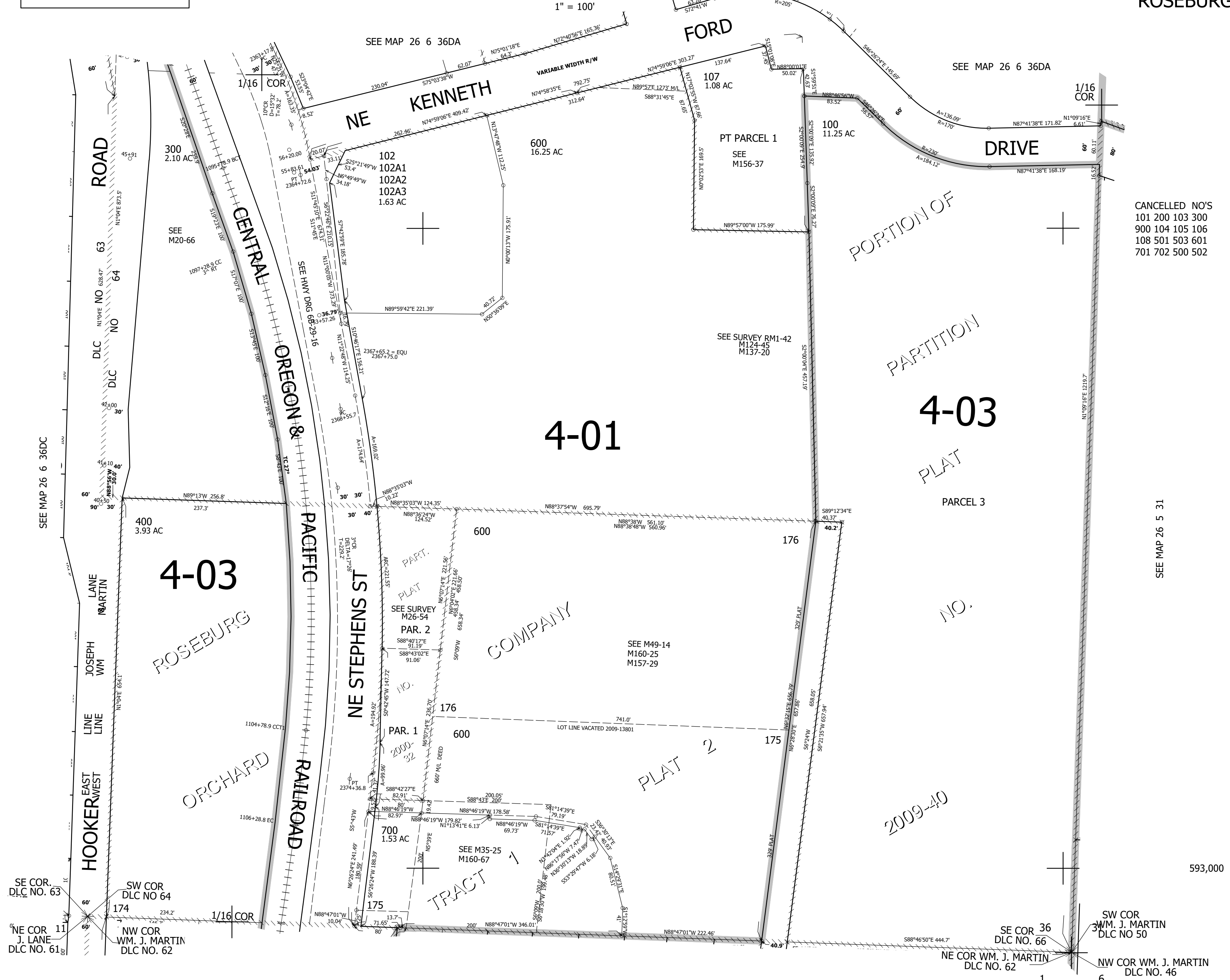


THIS MAP WAS PREPARED FOR ASSESSMENT PURPOSE ONLY.

SE1/4 SE1/4 SEC.36 T.26S. R.6W. W.M.  
DOUGLAS COUNTY  
1" = 100'

REVISED ON  
6-21-22

26 6 36DD  
ROSEBURG



CANCELLED NO'S  
101 200 103 300  
900 104 105 106  
108 501 503 601  
701 702 500 502

SEE MAP 26 5 31

SEE MAP 26 6 36DC

SEE MAP 27 6 1AA

26 6 36DD  
ROSEBURG

4,163,000