

THIS MAP WAS PREPARED FOR ASSESSMENT PURPOSE ONLY.

SW1/4 SE1/4 SEC.36 T.26S. R.6W. W.M.
DOUGLAS COUNTY
1" = 100'

REVISED ON
5-28-99

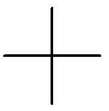
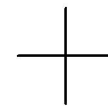
26 6 36DC

CANCELLED NO'S
200 900

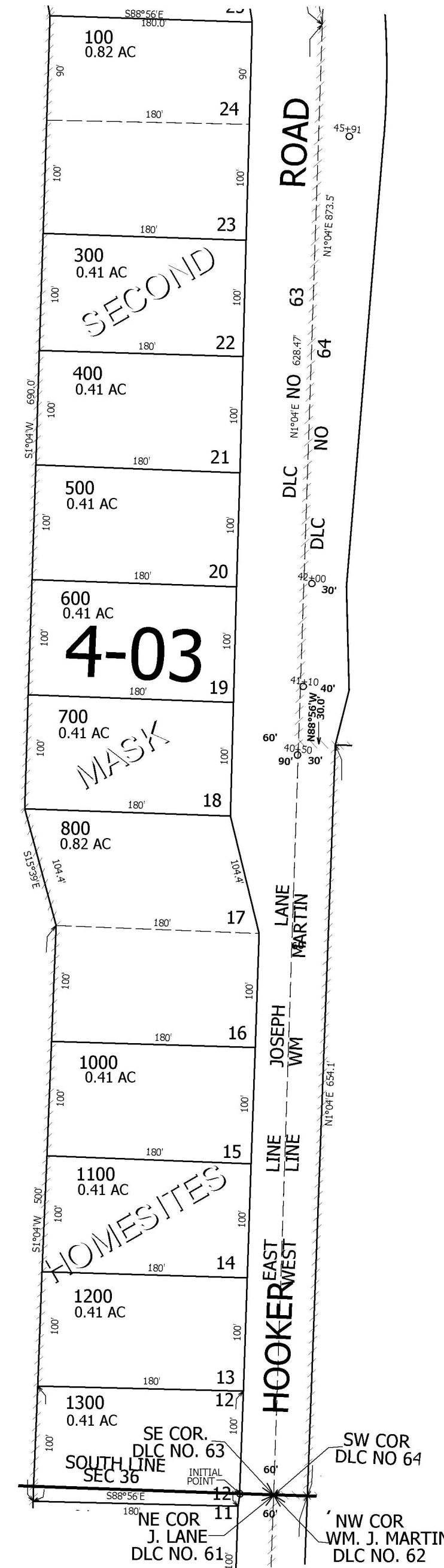
1/16
COR

SEE MAP 26 6 36DB

1/16
COR

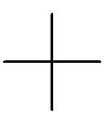
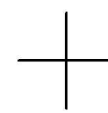


SEE MAP 26 6 36



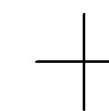
SEE MAP 26 6 36DD

1/4
COR



SEE MAP 27 6 1AB

593,000



4,162,000

26 6 36DC