

THIS MAP WAS PREPARED FOR ASSESSMENT PURPOSE ONLY.

Upper Left:
123°21'14"W 43°15'57"N
4161303E 595720N ft

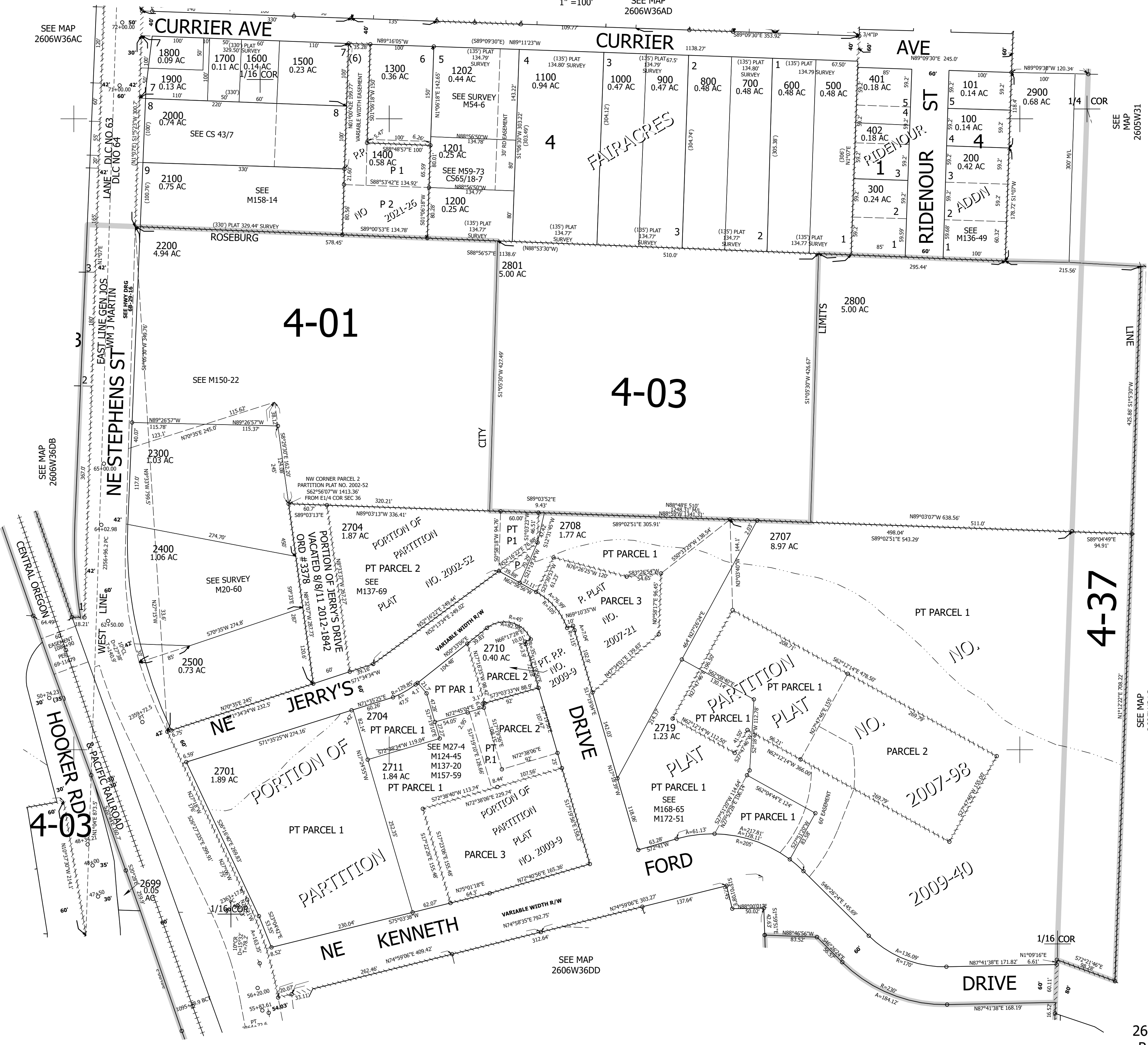
NE1/4 SE1/4 SEC.36 T.26S. R.06W. W.M.
DOUGLAS COUNTY

Date Exported 2025-11-20

260636DA
Roseburg

CANCELLED NOS:
400 2600 2702
2703 2700 2705
2706 2201 2301
2701A1 2709
2713 THRU 2718
2720 2721 2722
2712 1401 1402

1" = 100'
SEE MAP
2606W36AD



SEE MAP
2605W31

SEE MAP
2606W36AC

SEE MAP
2606W36DB

SEE MAP
2605W31C

260636DA
Roseburg

Lower Right:
123°20'47"W 43°15'40"N
4163280E 594000N ft