

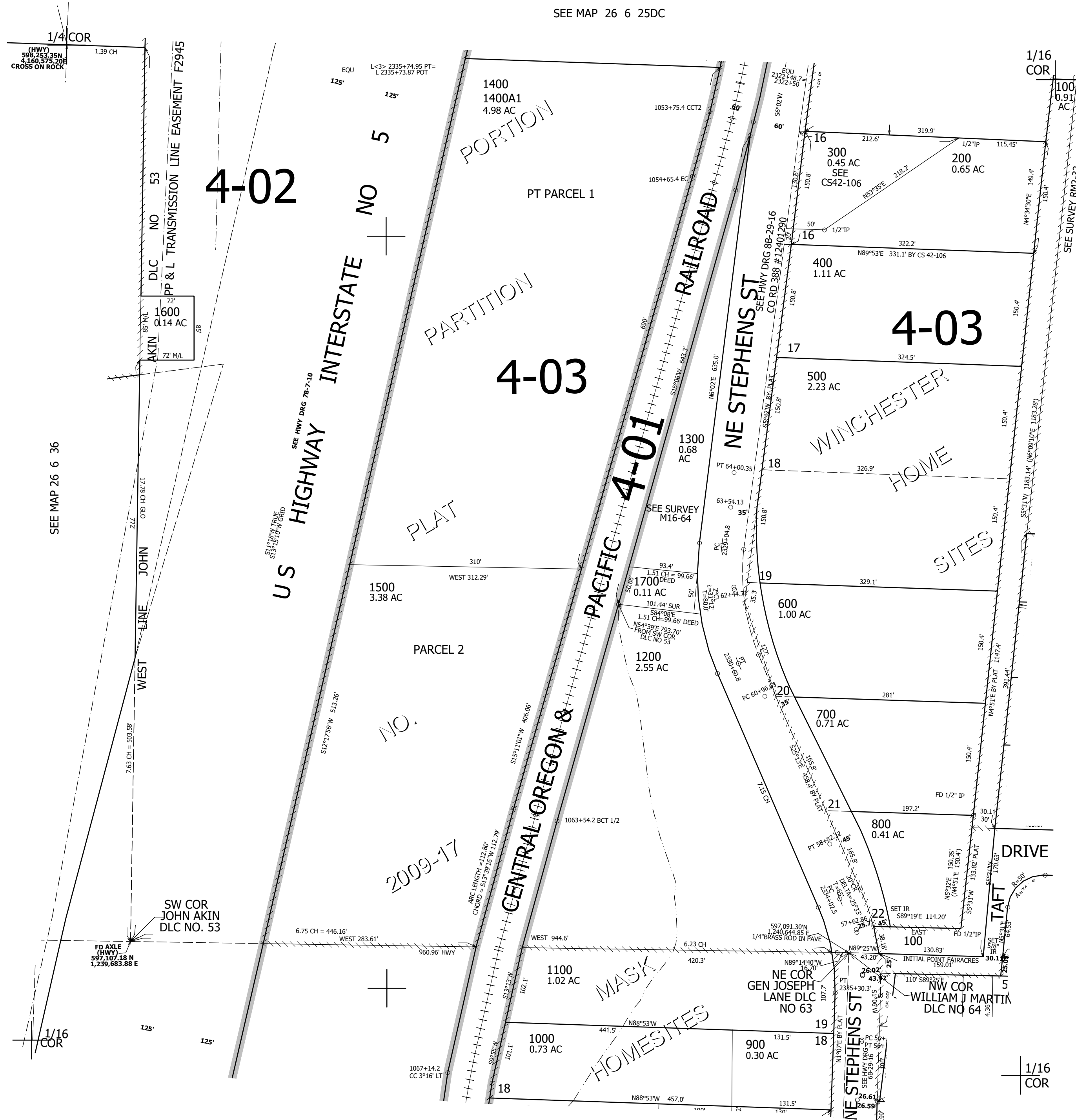
THIS MAP WAS PREPARED FOR ASSESSMENT PURPOSE ONLY.

NW1/4 NE1/4 SEC.36 T.26S. R.6W. W.M.
DOUGLAS COUNTY
1" = 100'

REVISED ON
5-10-21

26 6 36AB
ROSEBURG

SEE MAP 26 6 25DC



CANCELLED NO'S
1400A2

SEE MAP 26 6 36AA

597,000

SEE MAP 26 6 36AC

4,162,000

26 6 36AB
ROSEBURG