

THIS MAP WAS PREPARED FOR ASSESSMENT PURPOSE ONLY.

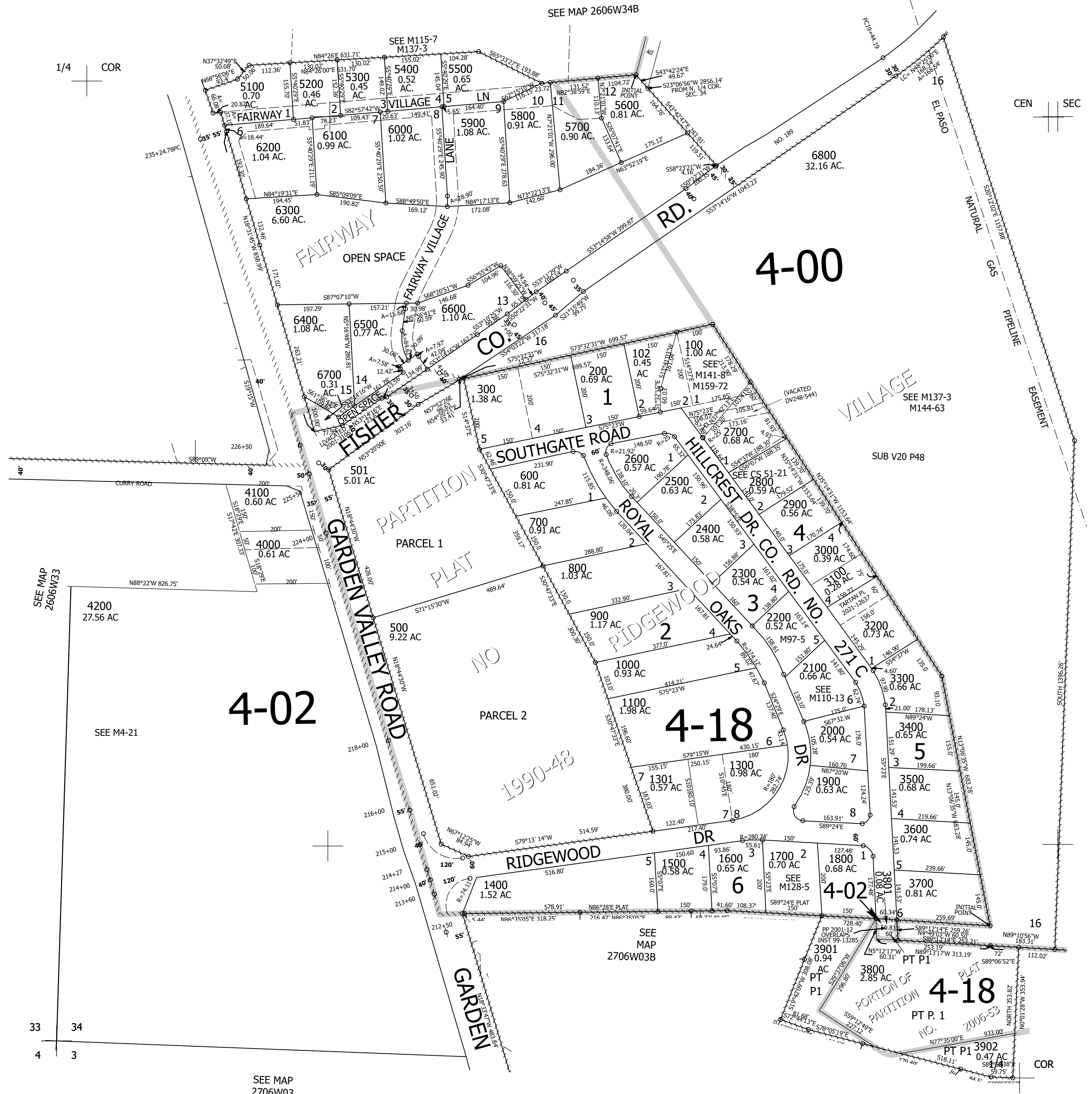
Upper Left:
123°24'32"W 43°16'N
4146643E 596582N ft

SW1/4 SEC.34 T.26S. R.06W. W.M.
DOUGLAS COUNTY
1" = 200'

Date Exported 2024-03-19

260634C

CANCELLED NOS:
1200 4201 400
4300 4401 4402
4403 4404 4400
4601 4602 4603
4600 4701 4702
4703 4704 4700
4801 4802 4800
4901 4902 4903
4900 5001 5002
5003 5000 101
3802 3803 3900
3903 2701 4000A1



1/4 COR

CEN SEC

33 34
4 3

SEE MAP
2706W03

SEE MAP
2706W03B

SEE MAP 2606W34

260634C

Lower Right:
123°23'38"W 43°15'27"N
4150567E 593105N ft