

THIS MAP WAS PREPARED FOR ASSESSMENT PURPOSE ONLY.

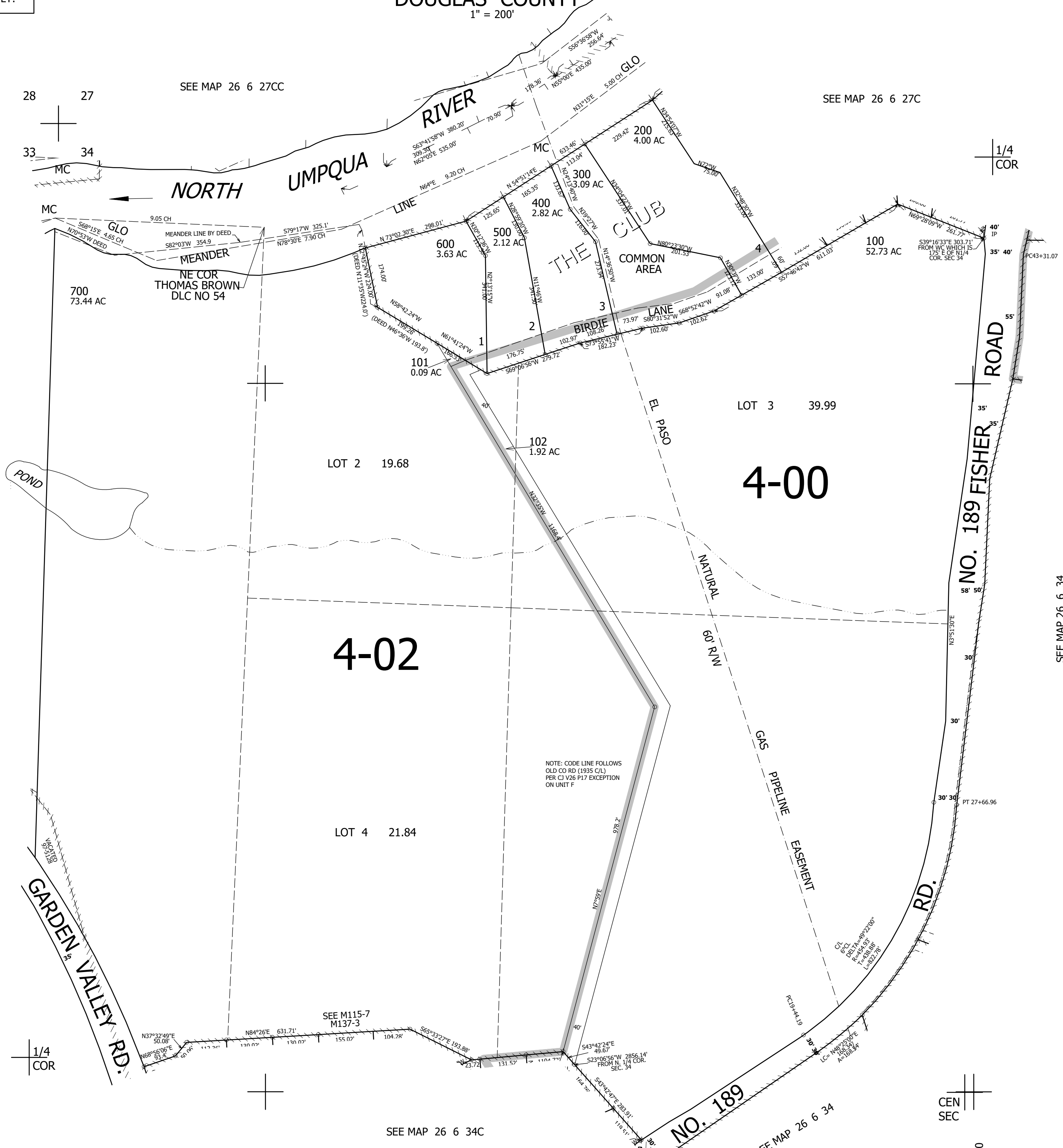
NW1/4 SEC.34 T.26S. R.6W. W.M. DOUGLAS COUNTY

1" = 200'

REVISED ON 12-14-01

26 6 34B

CANCELLED NO'S 701 703 704 705 706 702



SEE MAP 26 6 33A

SEE MAP 26 6 27C

SEE MAP 26 6 27CC

SEE MAP 26 6 34

SEE MAP 26 6 34C

SEE MAP 26 6 34

596,000

4,150,000

26 6 34B