

THIS MAP WAS PREPARED FOR ASSESSMENT PURPOSE ONLY.

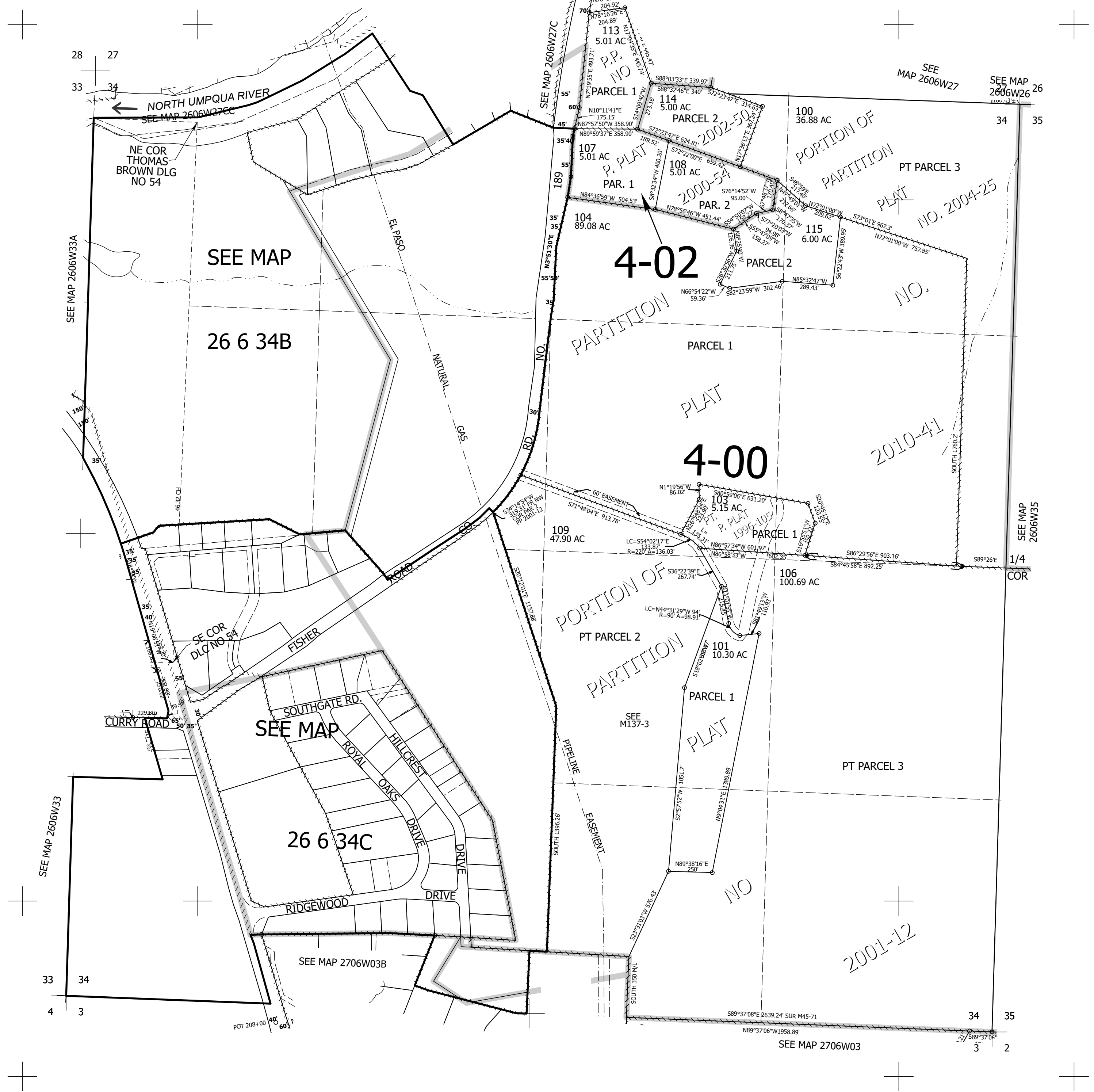
Upper Left:
123°24'42"W 43°16'30"N
4146052E 599664N ft

SEC.34 T.26S. R.06W. W.M.
DOUGLAS COUNTY
1" = 400'

Date Exported 2025-02-05

260634
& INDEX

CANCELLED NOS:
200 102 201
202 300 105
110 111 112



28 27
33 34

SEE MAP 2606W33A

SEE MAP 2606W33

33 34
4 3

NE COR THOMAS BROWN DLG NO 54

SEE MAP

26 6 34B

SEE MAP

26 6 34C

SEE MAP 2706W03B

SEE MAP 2606W27C

4-02

4-00

SEE MAP M137-3

SEE MAP 2706W03

SEE MAP 2606W27

SEE MAP 2606W26

SEE MAP 2606W35

34 35
3 2

260634
& INDEX

Lower Right:
123°22'53"W 43°15'24"N
4153902E 592709N ft