

THIS MAP WAS PREPARED FOR ASSESSMENT PURPOSE ONLY.

NE1/4 SEC.33 T.26S. R.6W. W.M. DOUGLAS COUNTY

1" = 200'

REVISED ON
7-23-19

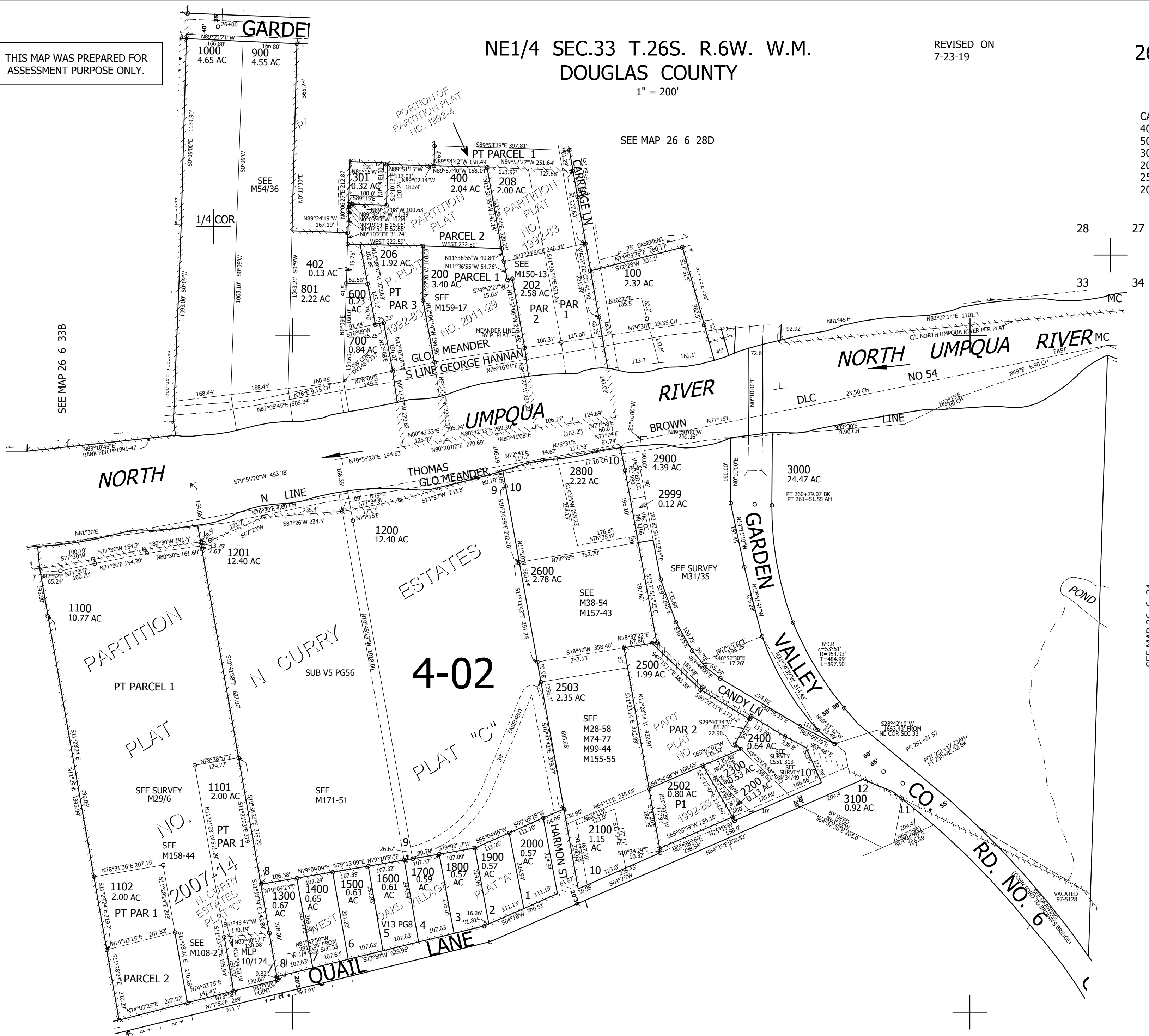
26 6 33A

CANCELLED NO'S
401 2501 800
500 2700 701
300 201 2504
203 204 205
2505 1103 1104
207

SEE MAP 26 6 28D

SEE MAP 26 6 33B

SEE MAP 26 6 34



CEN
SEC

4,147,000

1/4
COR

26 6 33A

SEE MAP 26 6 33

596,500