

THIS MAP WAS PREPARED FOR ASSESSMENT PURPOSE ONLY.

NE1/4 SEC.32 T.26S. R.6W. W.M. DOUGLAS COUNTY
1" = 200'

REVISED ON 5-20-19

26 6 32A

SEE MAP 26 6 29

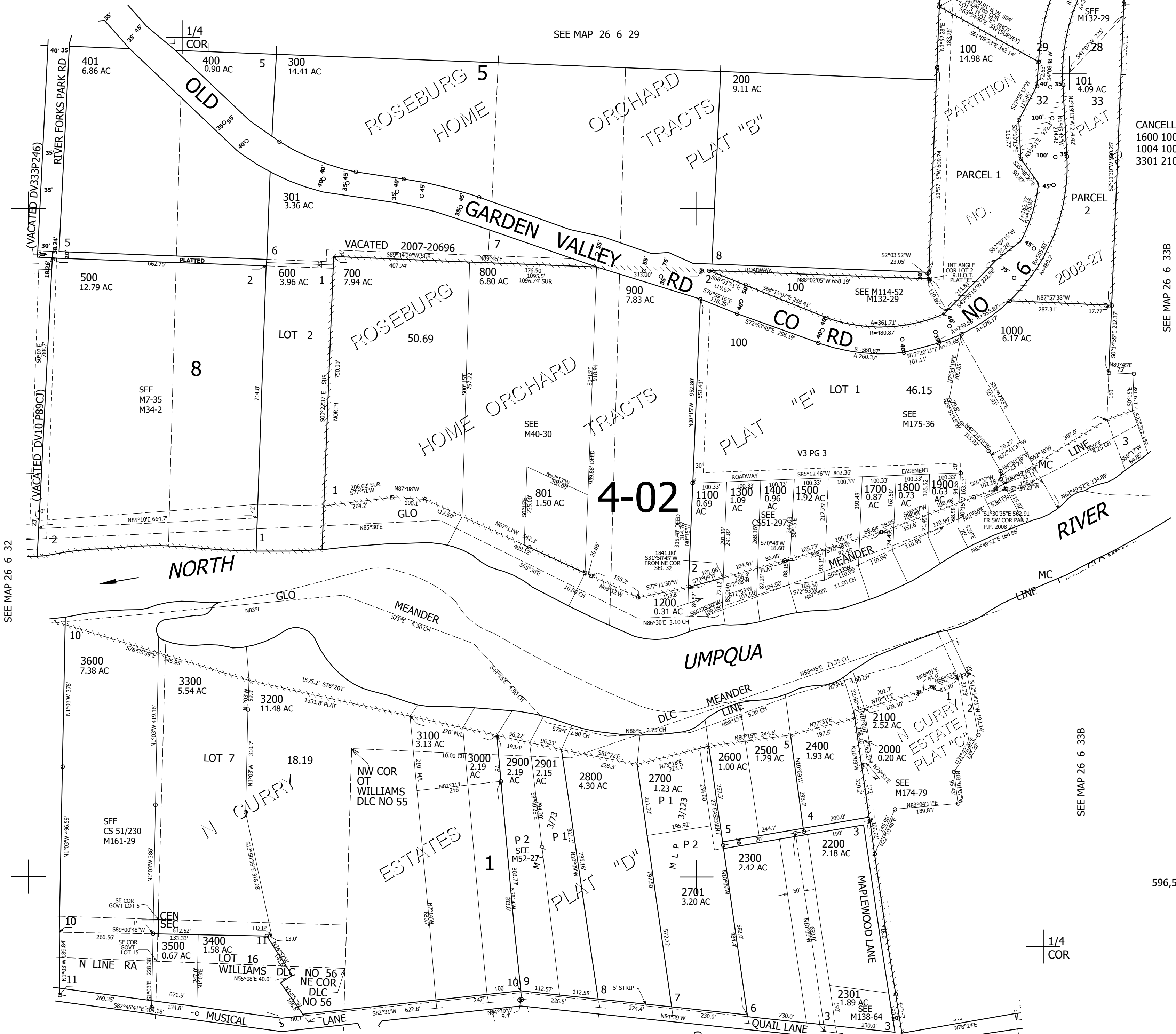
CANCELLED NO'S
1600 1003 1001
1004 1005 1002
3301 2101 1006

SEE MAP 26 6 33B

SEE MAP 26 6 33B

596,500

26 6 32A



SEE MAP 26 6 32

SEE MAP 26 6 32

4,141,000