

THIS MAP WAS PREPARED FOR ASSESSMENT PURPOSE ONLY.

Upper Left:
123°28'11"W 43°16'29"N
4130559E 600095N ft

SEC.31 T.26S. R.06W. W.M.
DOUGLAS COUNTY
1" = 400'

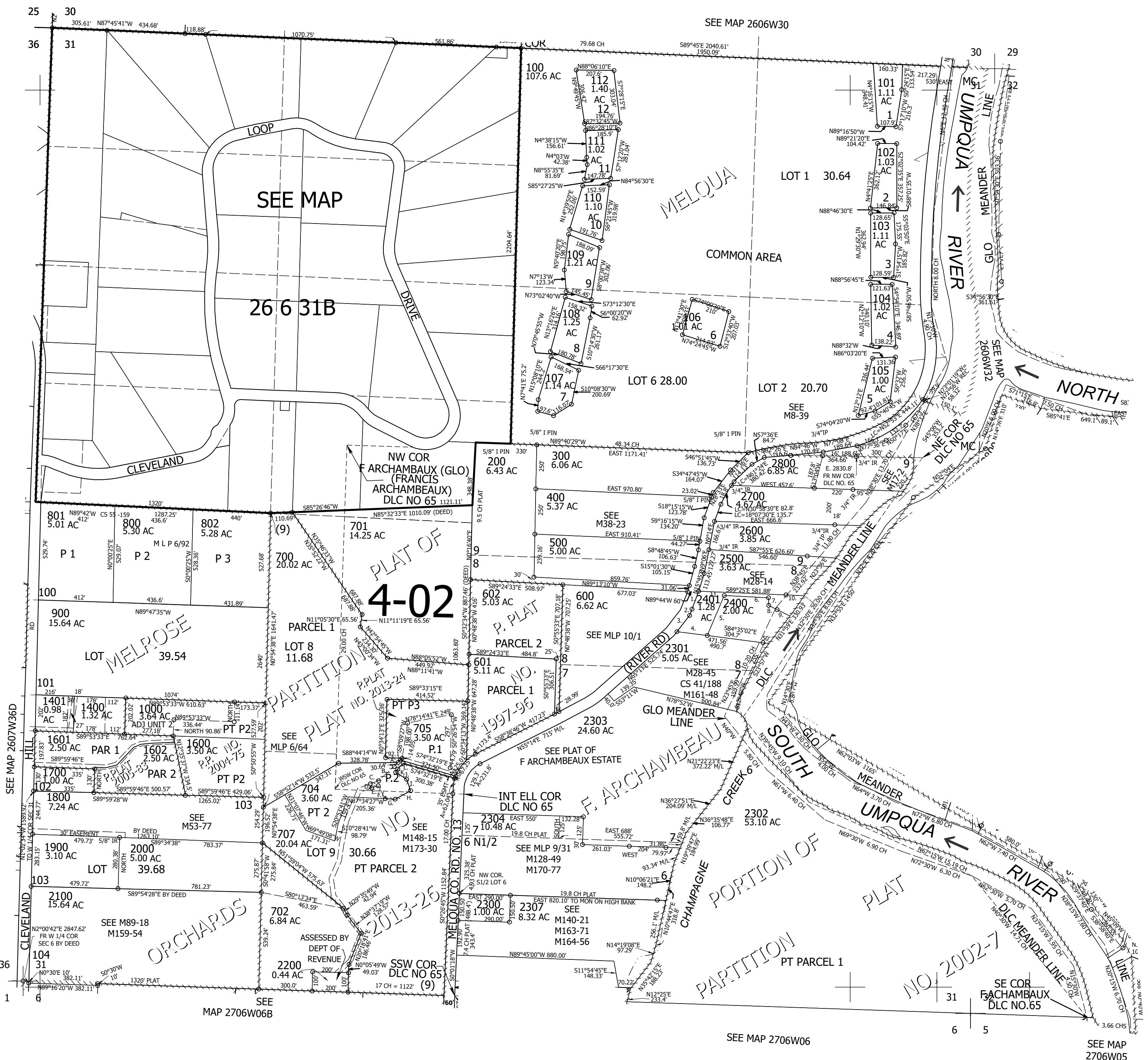
Date Exported 2025-09-23

260631
& INDEX

CANCELLED NOS:
1201 1301 2305
2306 703 1001 1100
1200 1300 1399 1500
706 2308 2309
708

- TAXLOT 704
- A. S42°36'08"W 49.93'
 - B. S46°56'41"W 117.00'
 - C. S68°32'35"W 49.35'
 - D. N20°13'03"W 25.00'
 - E. S69°46'57"W 37.38'
 - F. N29°37'34"W 82.21'
 - G. N87°34'27"W 55.57'
 - H. S60°32'26"W 98.23'
 - I. N20°02'32"W 68.29'
 - J. N58°50'26"W 71.41'
 - K. S31°09'35"W 20.93'
 - L. S42°05'50" 45.99'

- TAXLOT 2401
- 1. S12°32'W 100'
 - 2. S29°32'W 28.61'
 - 3. S34°19'30"W 135.79'
 - 4. S84°35'02"E 168.26'
 - 5. N21°02'E 249.24'
 - 6. S88°58'53"E 247.68'
 - 7. S2°29'47"E 42.03'
 - 8. S2°29'02"E 52.67'
 - 9. S65°00'22"E 76.8' M/L
 - 10. N89°25'W 100' M/L
 - 11. N89°25'W 481.38'



SEE MAP 2607W36D

SEE MAP 2706W06B

SEE MAP 2706W06

SEE MAP 2706W05

260631
& INDEX

Lower Right:
123°26'22"W 43°15'23"N
4138409E 593140N ft