

THIS MAP WAS PREPARED FOR ASSESSMENT PURPOSE ONLY.

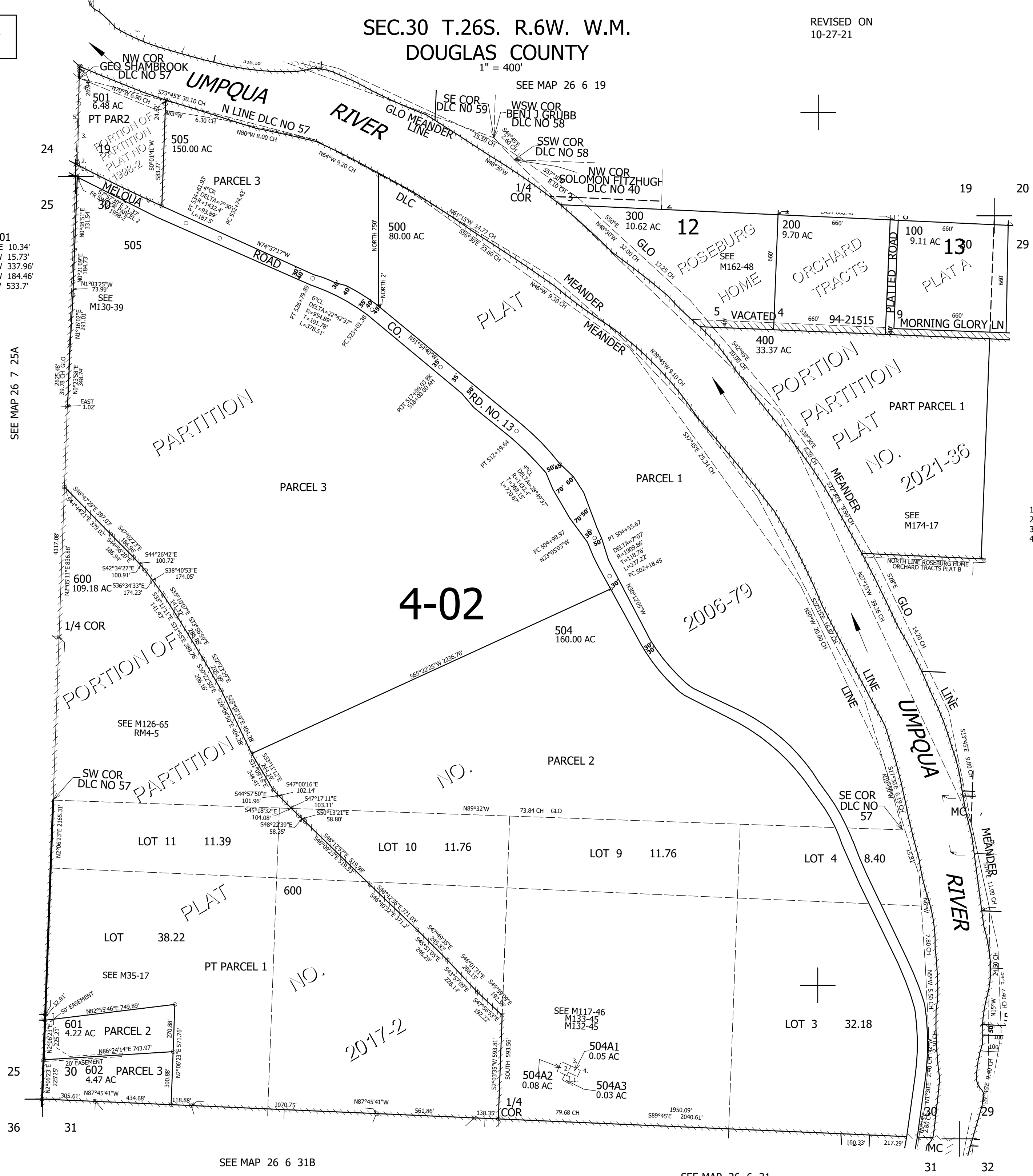
SEC.30 T.26S. R.6W. W.M. DOUGLAS COUNTY

REVISED ON 10-27-21

26 6 30

1" = 400'

SEE MAP 26 6 19



- PARCEL 501
1. S65°10'20"E 10.34'
 2. N4°25'55"W 15.73'
 3. N0°43'15"W 337.96'
 4. N1°08'06"W 184.46'
 5. S0°01'41"W 533.7'

- CANCELLED NO'S
- 700 700A1 502
 - 503 500A1 500A2
 - 500A3

- PARCEL 504A1
1. N66°33'20"W 60'
 2. N23°26'40"E 40'
 3. S66°33'20"E 60'
 4. S23°26'40"W 40'

4-02

2006-79

2017-2

SEE MAP 26 7 25A

SEE MAP 26 7 25D

SEE MAP 26 6 31B

SEE MAP 26 6 31

4,136,000

SEE MAP 26 6 29B

SEE MAP 26 6 29

600,000

26 6 30