

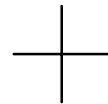
THIS MAP WAS PREPARED FOR ASSESSMENT PURPOSE ONLY.

NE1/4 NE1/4 SEC.29 T.26S. R.6W. W.M.  
DOUGLAS COUNTY  
1" = 100'

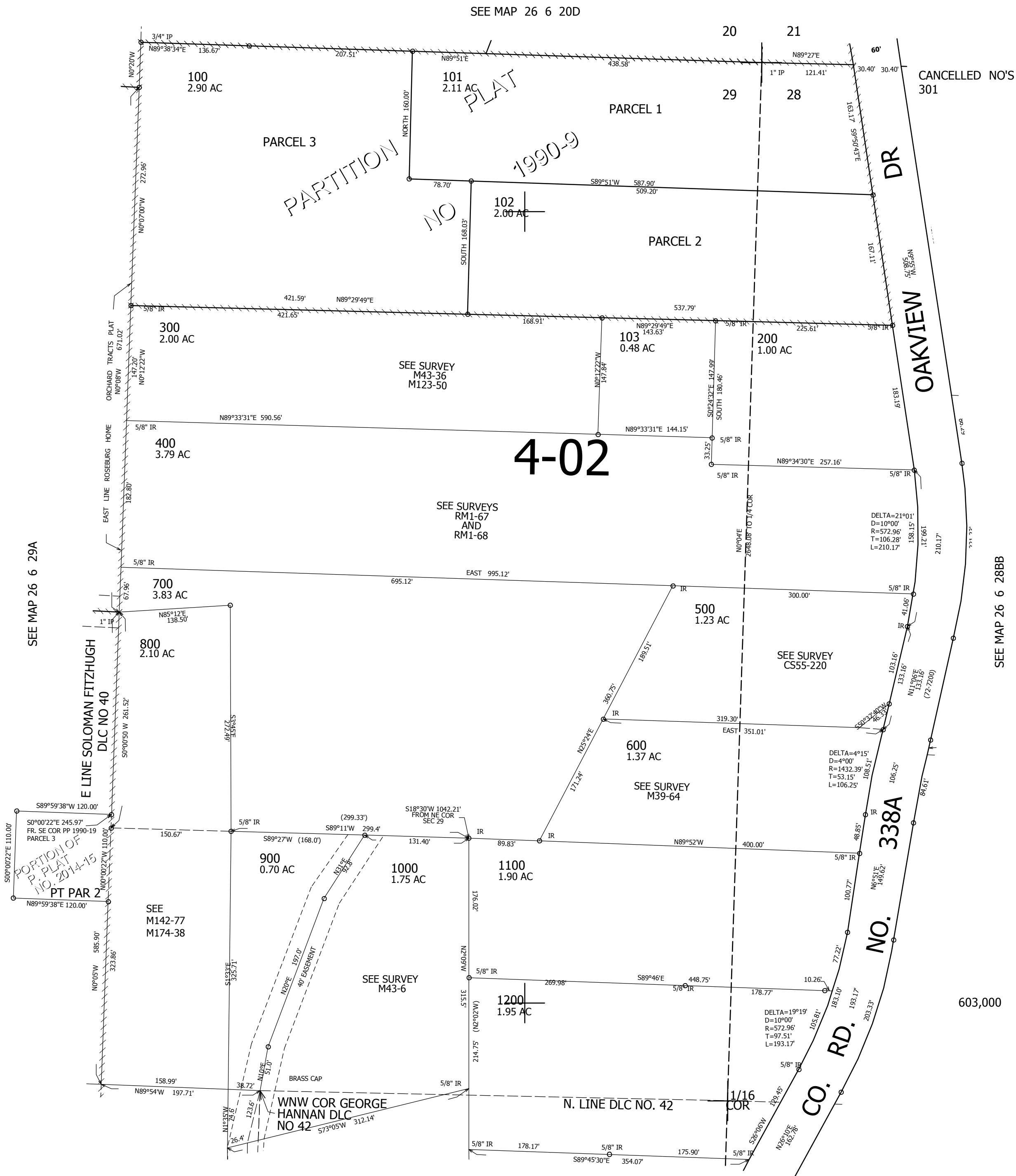
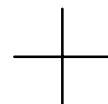
REVISED ON  
5-9-18

26 6 29AA

1/16  
COR



1/16  
COR



CANCELLED NO'S  
301

SEE MAP 26 6 28BB

603,000

SEE MAP 26 6 29A

4,142,000

26 6 29AA