

THIS MAP WAS PREPARED FOR ASSESSMENT PURPOSE ONLY.

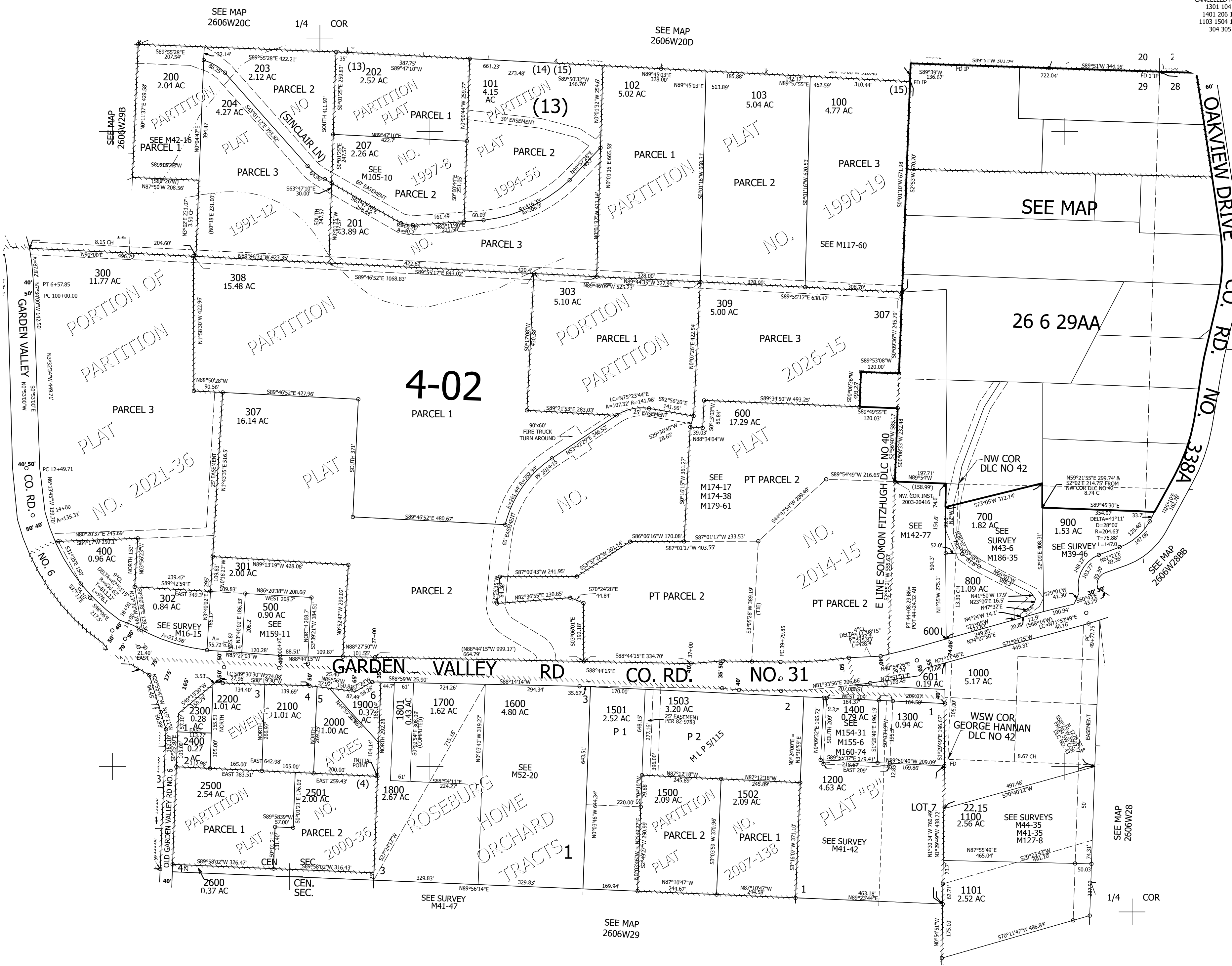
Upper Left:  
123°26'24"W 43°17'17"N  
4138636E 604629N ft

NE1/4 SEC.29 T.26S. R.06W. W.M.  
DOUGLAS COUNTY  
1" = 200'

Date Exported 2026-06-03

260629A  
& INDEX

CANCELLED NOS:  
1301 104 205  
1401 206 1102  
1103 1504 1505  
304 305 306



1/4 COR

260629A  
& INDEX

Lower Right:  
123°25'30"W 43°16'43"N  
4142562E 601029N ft