

THIS MAP WAS PREPARED FOR ASSESSMENT PURPOSE ONLY.

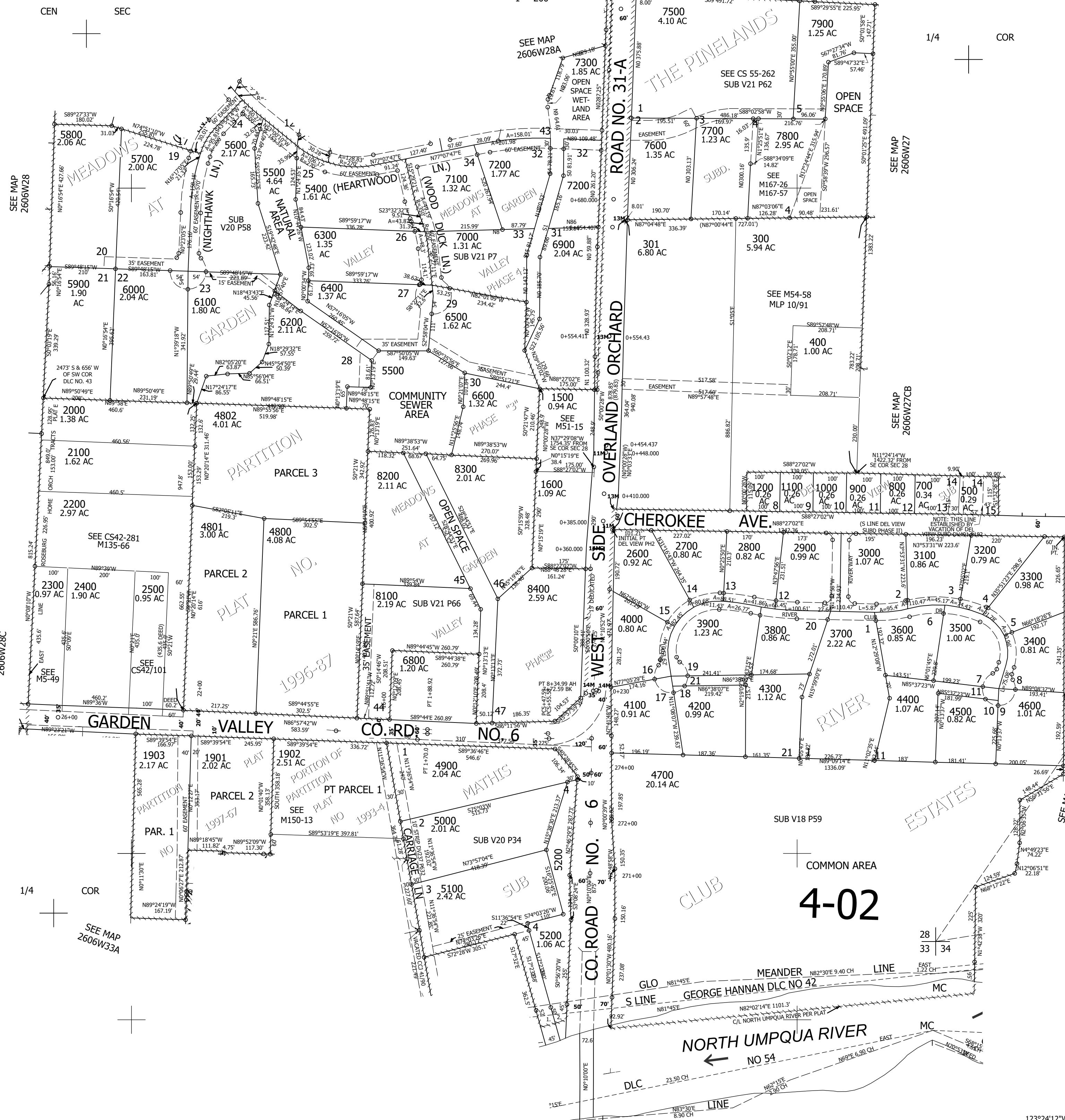
Upper Left:  
123°25'6"W 43°16'49"N  
4144304E 601639N ft

SE1/4 SEC.28 T.26S. R.06W. W.M.  
DOUGLAS COUNTY  
1" = 200'

Date Expired: 3/16/2023 2:01 PM

2606W28D  
&

CANCELLED NOS:  
1900 1301 600  
1401 1300 1702  
1400 1703 1704  
1802 1700 1701  
1705 1800 1801  
5300 7400 100  
200 6700 1904  
8001 8500 8002  
7801 8000



SEE MAP 2606W28

SEE MAP 2606W28C

SEE MAP 2606W33A

SEE MAP 2606W28A

SEE MAP 2606W27

SEE MAP 2606W27CB

SEE MAP 2606W27CC

CEN SEC

1/4 COR

1/4 COR

4-02

2606W28D  
&

Lower Right:  
123°24'12"W 43°16'16"N  
4148182E 598152N ft