

THIS MAP WAS PREPARED FOR ASSESSMENT PURPOSE ONLY.

NW1/4 NW1/4 SEC.28 T.26S. R.6W. W.M. DOUGLAS COUNTY

REVISED ON
7-6-15

26 6 28BB

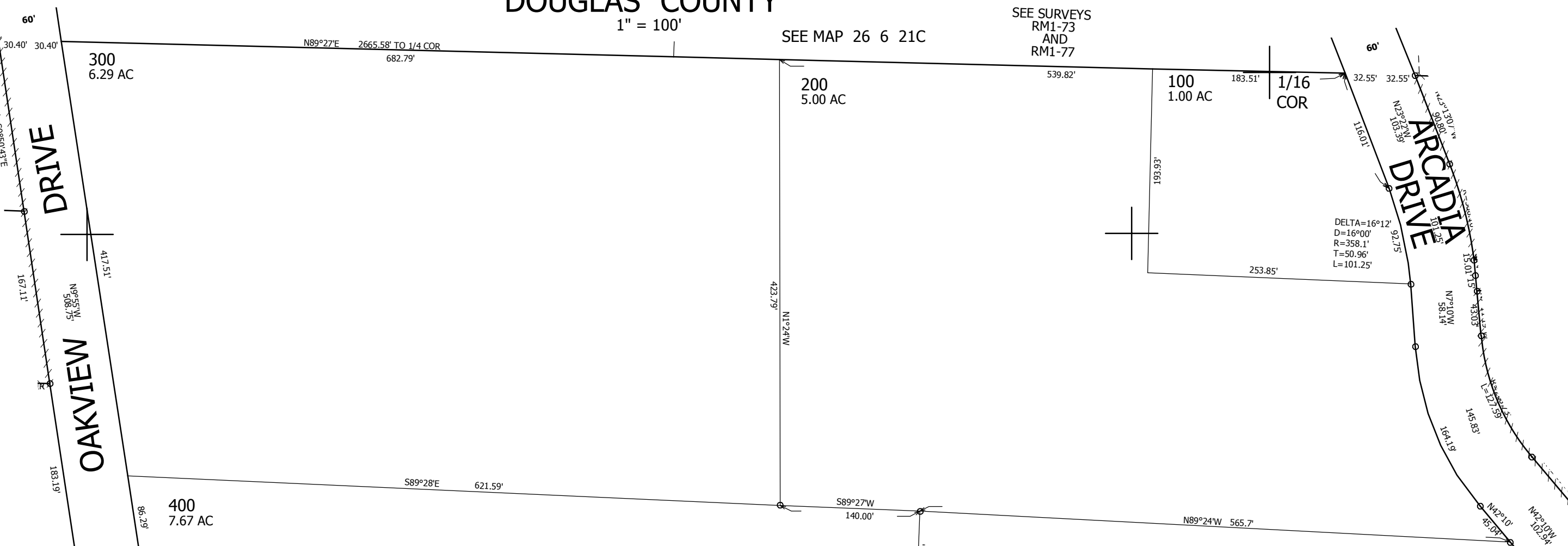
20 21
29 28

1" = 100'

SEE SURVEYS
RM1-73
AND
RM1-77

SEE MAP 26 6 21C

DELTA=16°12'
D=16°00'
R=358.1'
T=50.96'
L=101.25'



CANCELLED NO'S
901

SEE SURVEYS
RM1-67 IN SEC 21
AND
RM1-68

4-02

SEE MAP 26 6 29AA

CO. RD. NO. 338

E 356.88' AND
S 861.35' FROM NW
COR SEC 28

DELTA=4°15'
D=4°00'
R=1432.33'
T=53.15'
L=106.25'

DELTA=19°19'
D=10°00'
R=572.96'
T=97.51'
L=193.17'

DELTA=41°11'
D=28°00'
R=204.63'
T=76.68'
L=147.08'

DELTA=84°56'
D=81°51'
R=70'
T=64.07'
L=103.77'

4°CR
DELTA=13°26'30"
R=1432.4'
T=168.8'
L=336.04'

PT
53+13.79

WILBUR - GARDEN VALLEY

CO. RD. NO. 31

SEE MAP 26 6 28

4,143,500

SEE MAP 26 6 28BA

603,000

26 6 28BB

