

THIS MAP WAS PREPARED FOR ASSESSMENT PURPOSE ONLY.

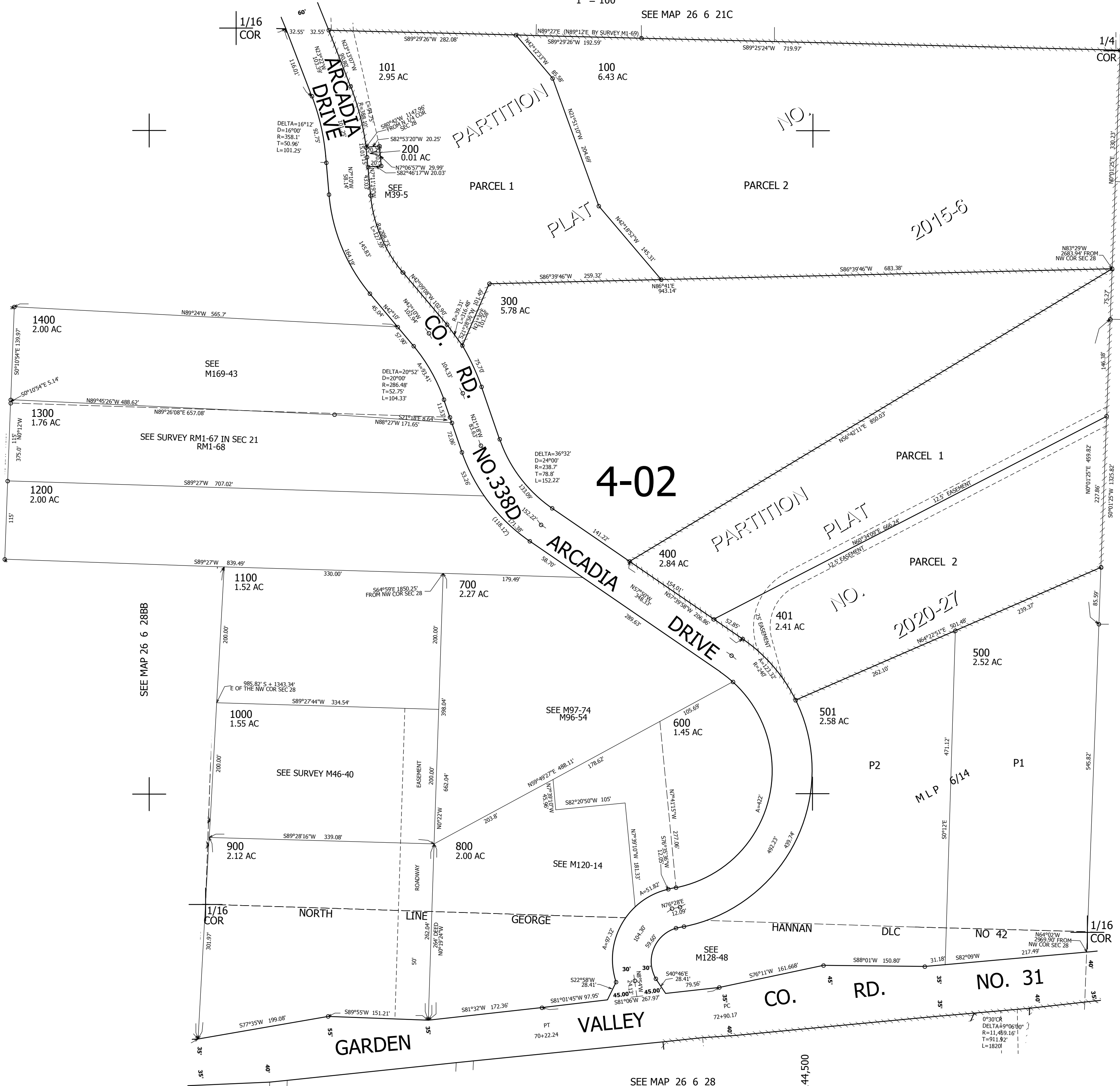
NE1/4 NW1/4 SEC.28 T.26S. R.6W. W.M. DOUGLAS COUNTY

REVISED ON 6-29-20

26 6 28BA

1" = 100'

SEE MAP 26 6 21C



CANCELLED NO'S 801 1301 1401

SEE MAP 26 6 28A

603,000

SEE MAP 26 6 28

4,144,500

26 6 28BA