

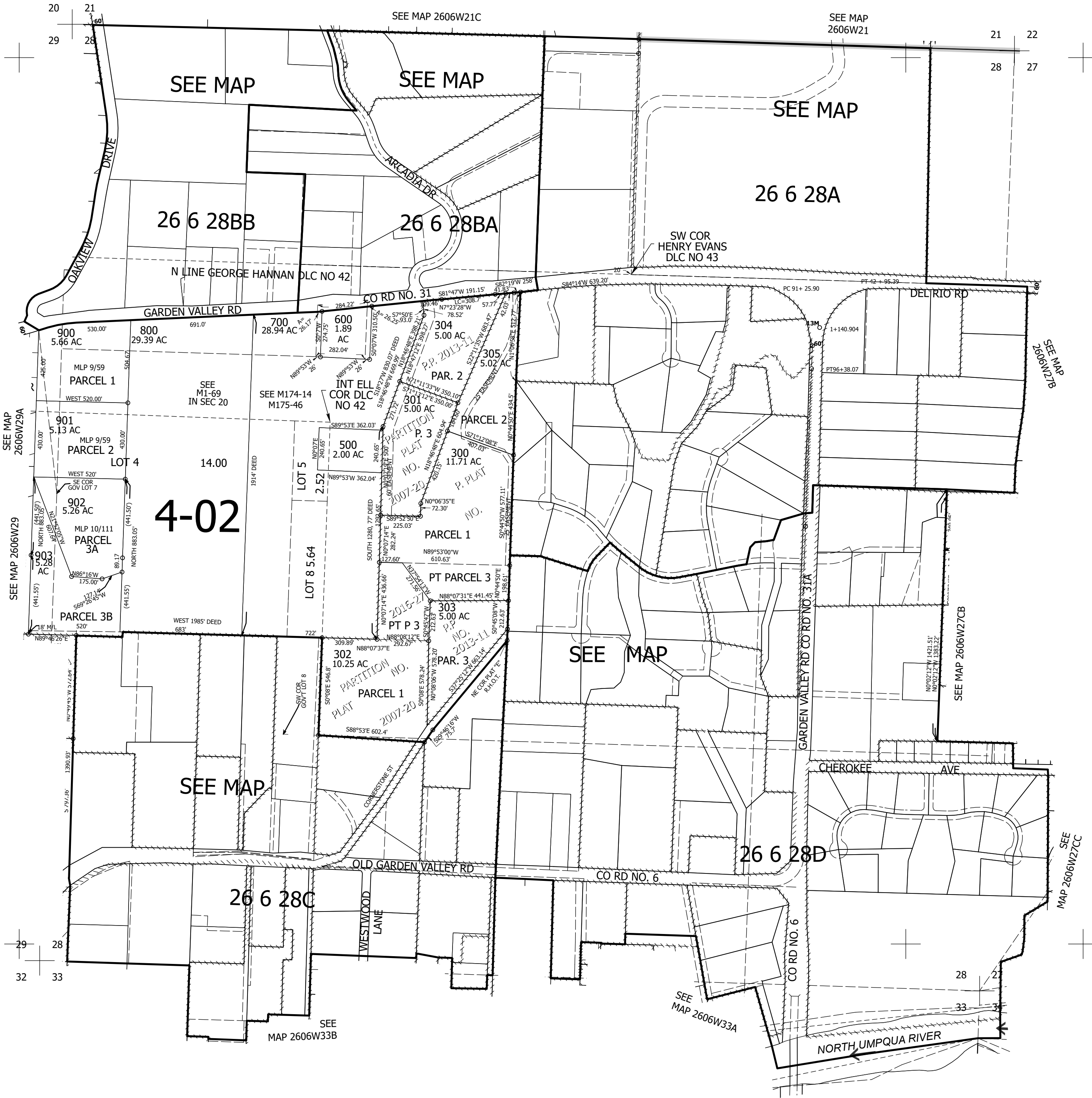
THIS MAP WAS PREPARED FOR ASSESSMENT PURPOSE ONLY.

Upper Left:
123°25'53"W 43°17'18"N
4140989E 604668N ft

SEC.28 T.26S. R.06W. W.M.
DOUGLAS COUNTY
1" = 400'

Date Exported 2025-04-15

CANCELLED NOS:
100 202 400
200 201 1100
203 1002 1001
1000 101 701
601 307 306



Lower Right:
123°24'3"W 43°16'12"N
4148838E 597713N ft