

THIS MAP WAS PREPARED FOR ASSESSMENT PURPOSE ONLY.

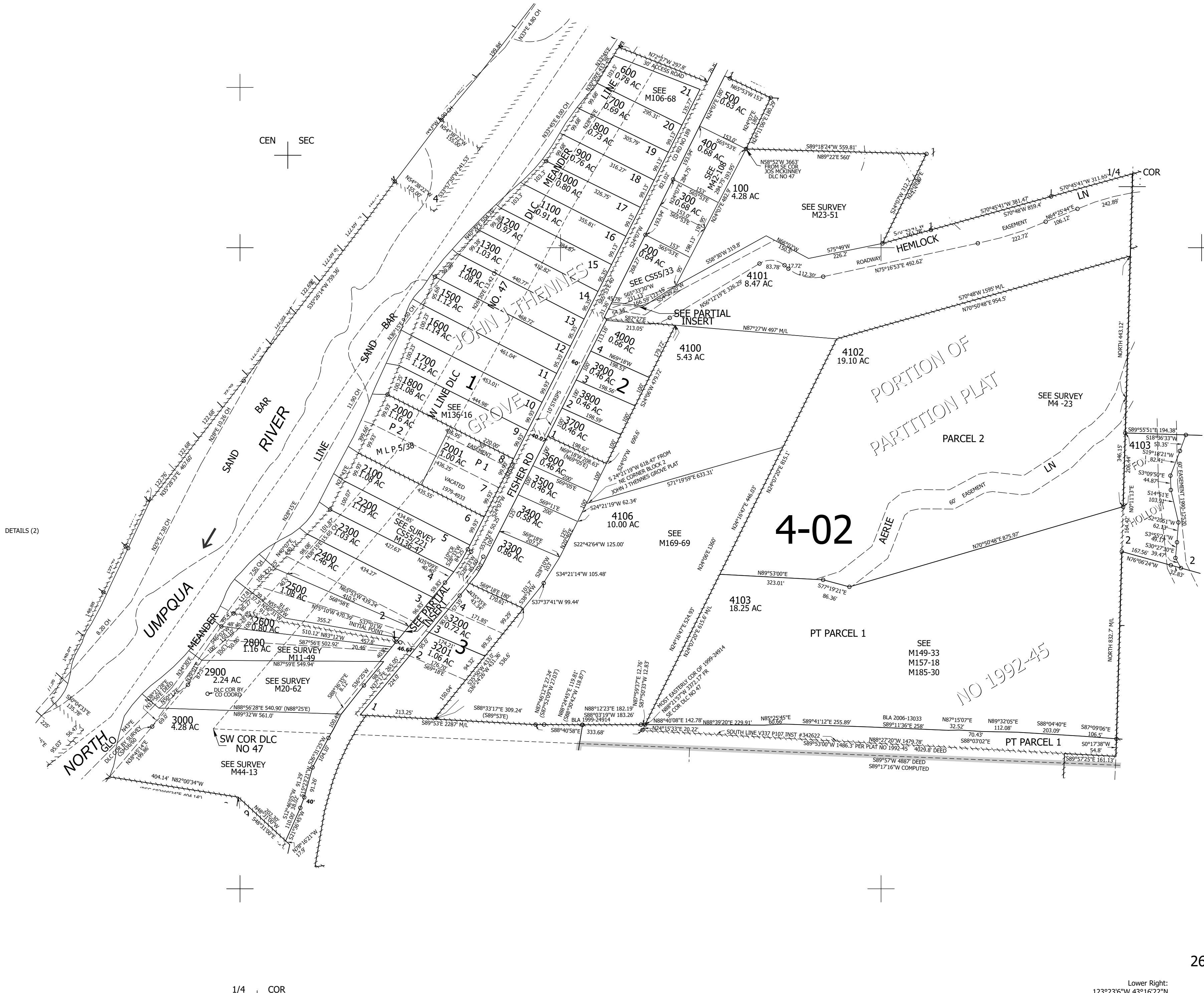
Upper Left:  
123°24'W 43°16'57"N  
4149216E 602203N ft

SE1/4 SEC.27 T.26S. R.06W. W.M.  
DOUGLAS COUNTY  
1" = 200'

Date Exported 2025-09-30

260627D

CANCELLED NOS:  
1900 3100 4104  
2700 4105



DETAILS (2)

4-02

NO 1992-45

1/4 COR

Lower Right:  
123°23'6"W 43°16'22"N  
4153143E 598603N ft

260627D