

THIS MAP WAS PREPARED FOR ASSESSMENT PURPOSE ONLY.

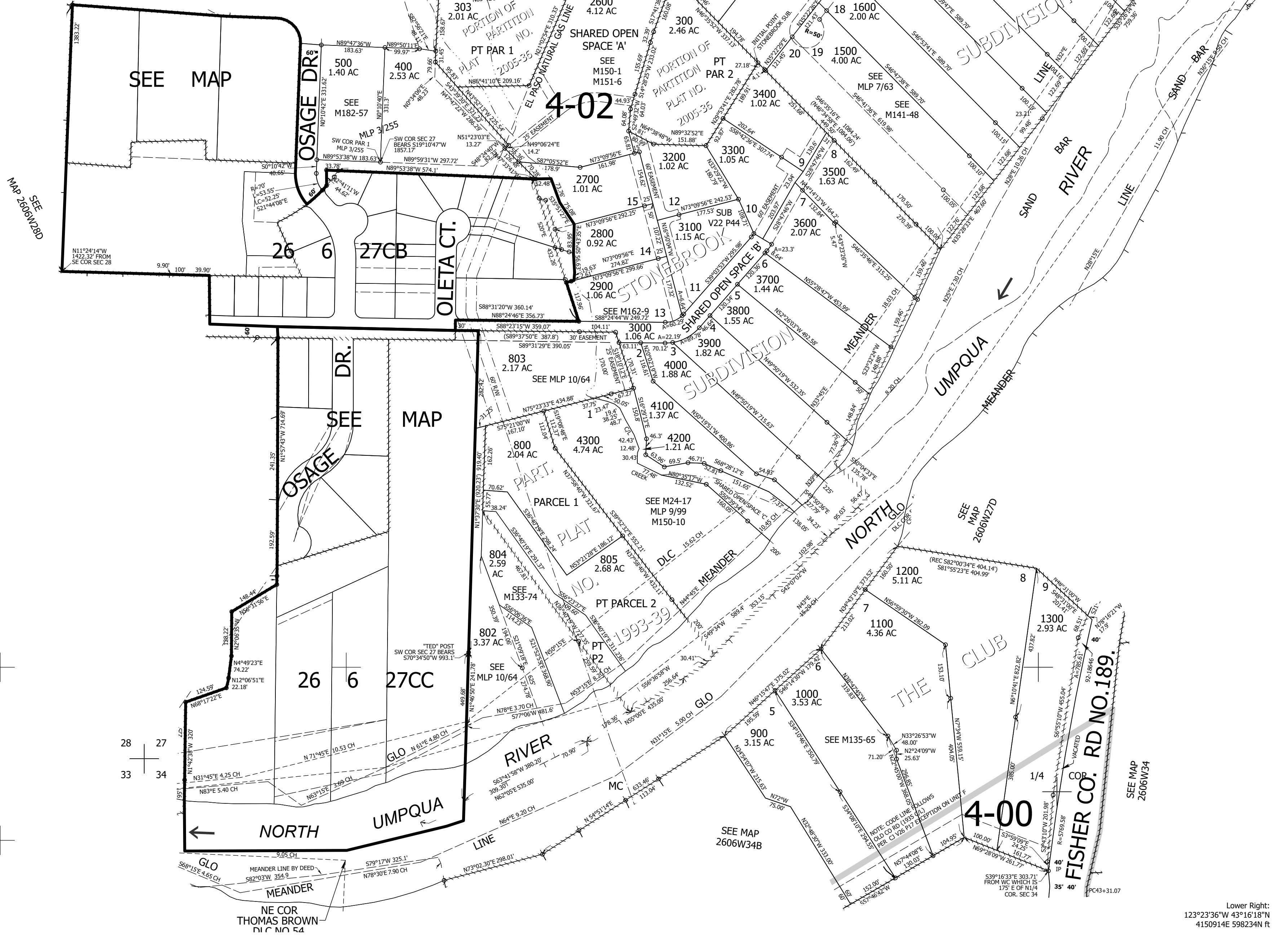
Upper Left:
123°24'30"W 43°16'51"N
4146990E 601711N ft

SW1/4 SEC.27 T.26S. R.06W. W.M.
DOUGLAS COUNTY
1" = 200'

Date Exported 2025-01-09

CANCELLED NOS:
100 201 200
700 301 1101
1101 304 302
801
805 THRU 812
306 THRU 310
3301 3401 3501
600 2701 2801
1400 501 2802

1/4 COR



260627C
& INDEX

Lower Right:
123°23'36"W 43°16'18"N
4150914E 598234N ft