

THIS MAP WAS PREPARED FOR ASSESSMENT PURPOSE ONLY.

Upper Left:
123°24'35"W 43°17'17"N
4146704E 604357N ft

NW1/4 SEC.27 T.26S. R.06W. W.M.
DOUGLAS COUNTY
1" = 200'

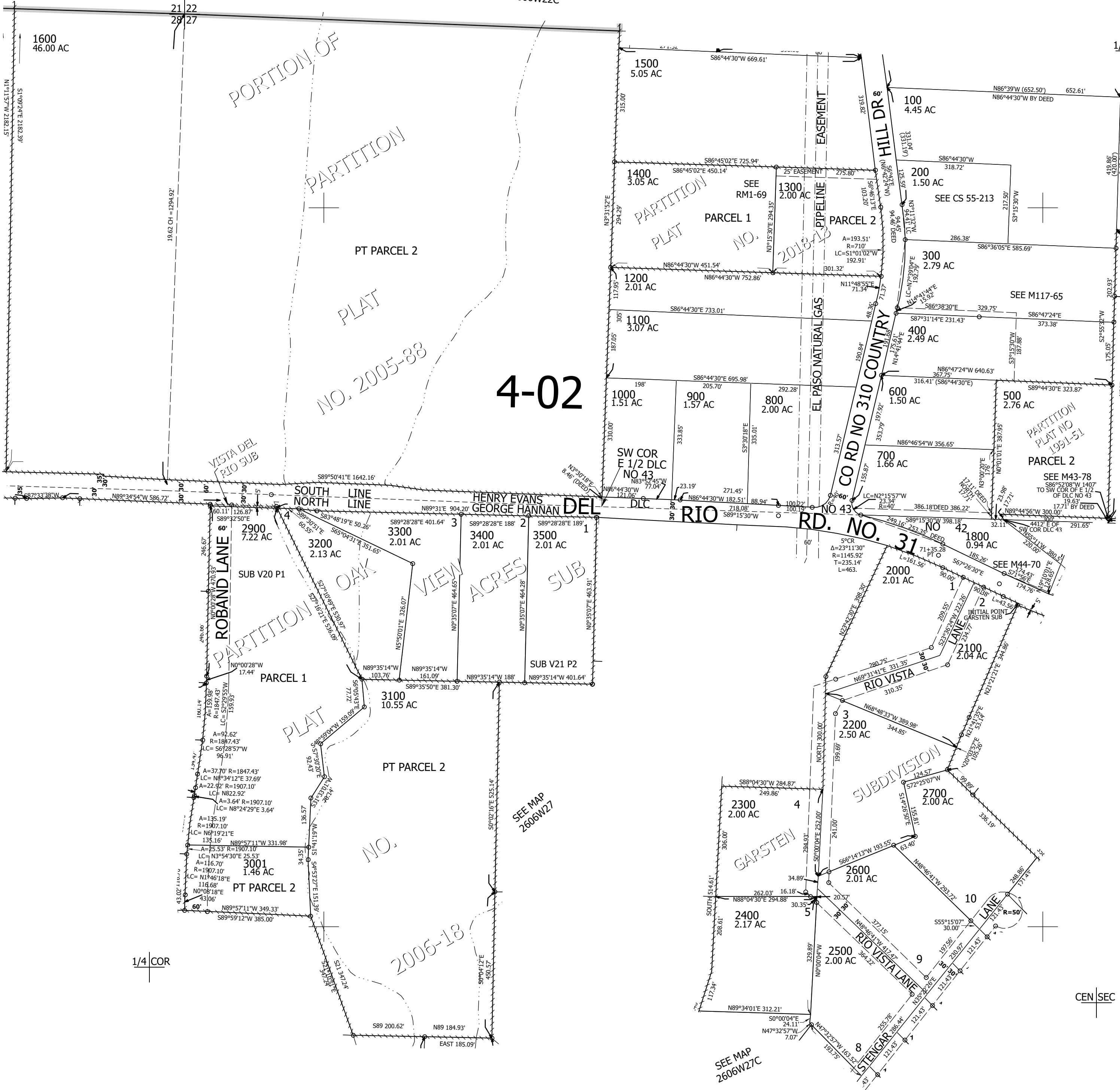
Date Exported 2025-09-17

260627B

CANCELLED NOS:
1801 301 401
501 1900 1700
2800 1401

SEE MAP
2606W22C

1/4 COR



SEE MAP
2606W28A

SEE MAP
2606W27A

SEE MAP
2606W27

SEE MAP
2606W27C

260627B

Lower Right:
123°23'41"W 43°16'43"N
4150631E 600757N ft