

THIS MAP WAS PREPARED FOR ASSESSMENT PURPOSE ONLY.

Upper Left:  
123°21'30"W 43°16'49"N  
4160323E 601090N ft

NW1/4 SE1/4 SEC.25 T.26S. R.06W. W.M.  
DOUGLAS COUNTY  
1" = 100'

Date Exported 2024-12-23

260625DB  
Roseburg

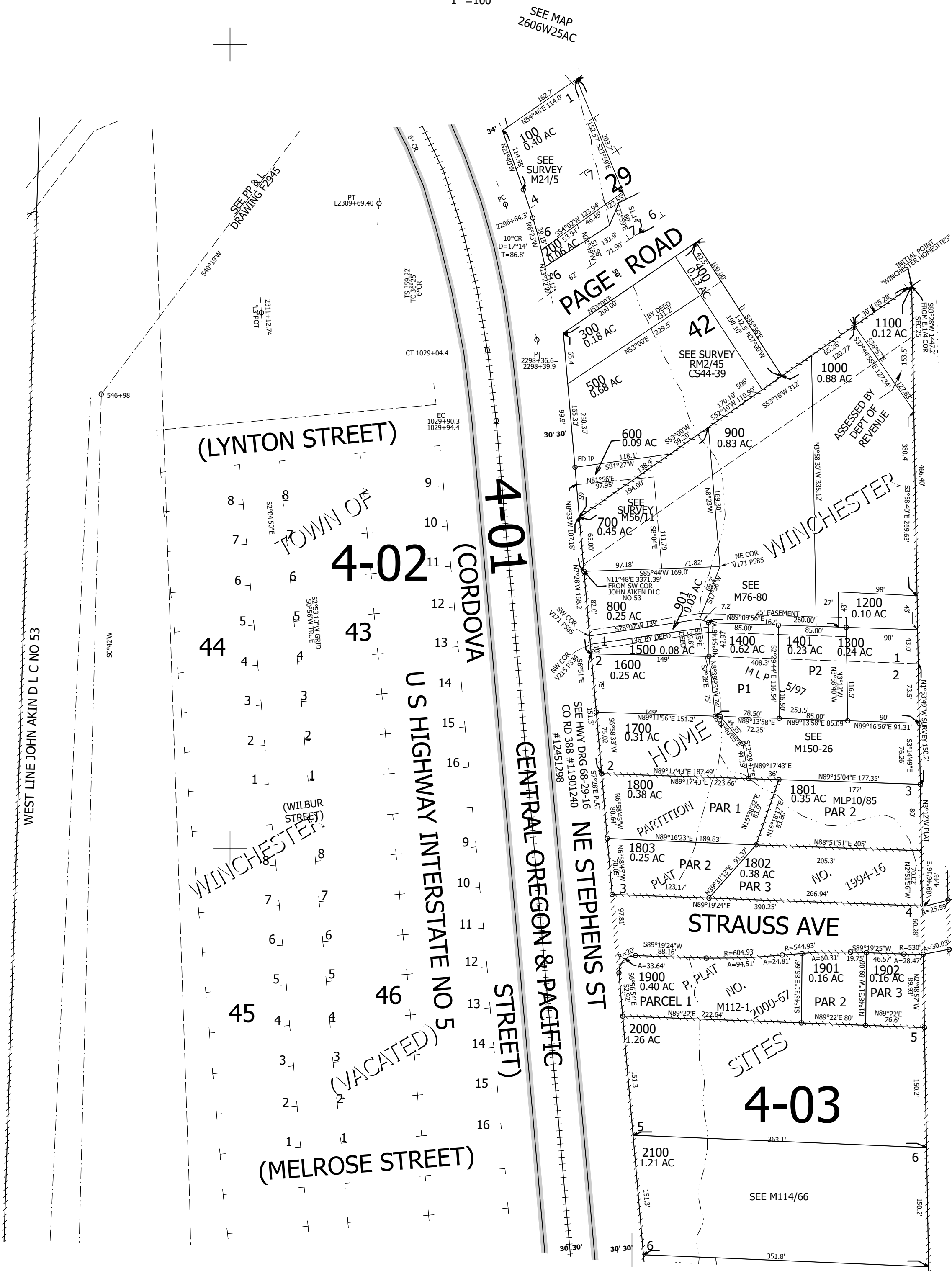
CANCELLED NOS:  
1701

CEN SEC

1/16 COR

1/16 COR

1/16 COR



SEE MAP  
2606W25

SEE MAP  
2606W25DA

SEE MAP  
2606W25

SEE MAP 2606W25DC

260625DB  
Roseburg

Lower Right:  
123°21'2"W 43°16'33"N  
4162298E 599352N ft