

THIS MAP WAS PREPARED FOR ASSESSMENT PURPOSE ONLY.

NE1/4 SE1/4 SEC.25 T.26S. R.6W. W.M.
DOUGLAS COUNTY

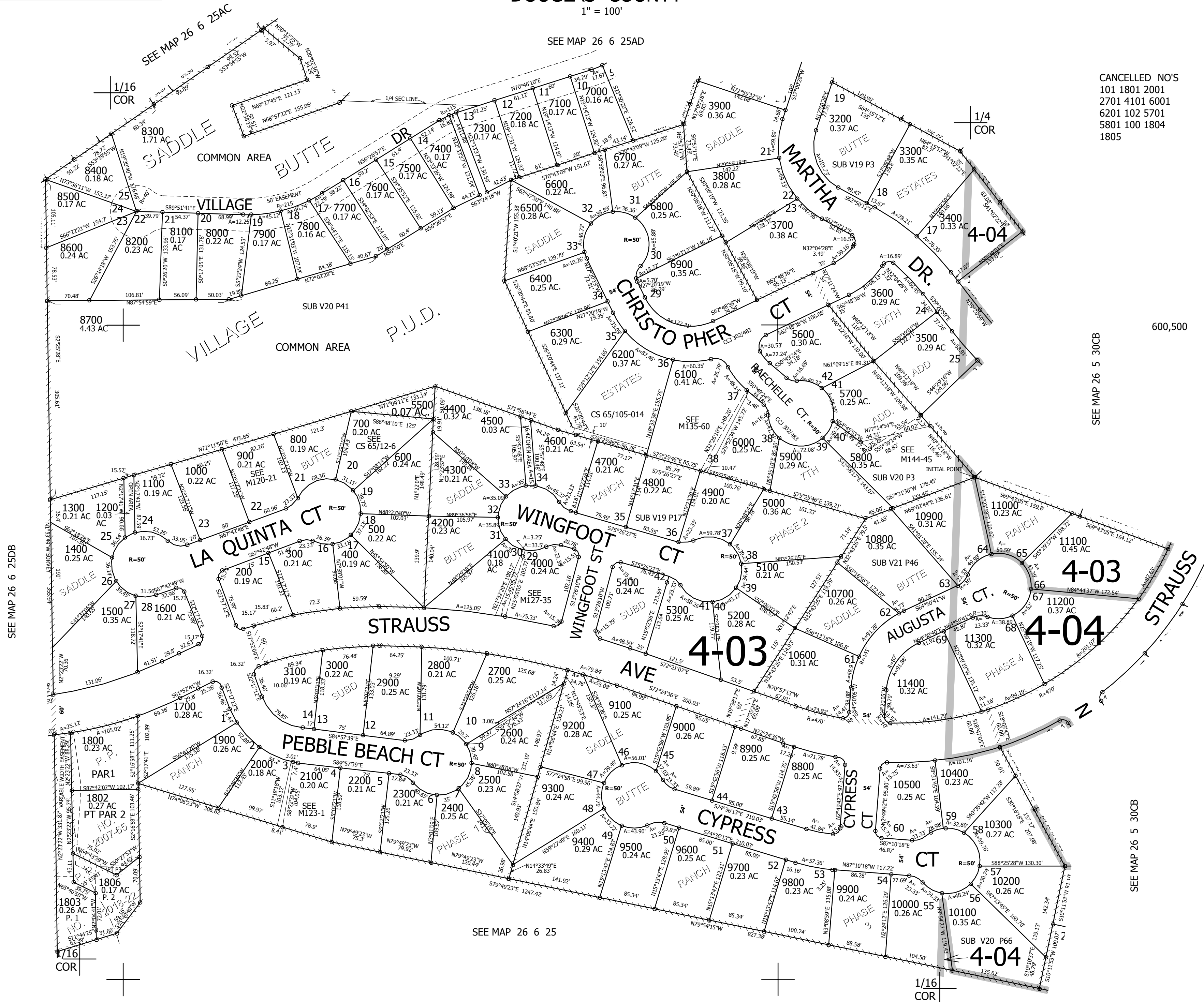
REVISED ON
6-29-18

26 6 25DA

1" = 100'

SEE MAP 26 6 25AD

CANCELLED NO'S
101 1801 2001
2701 4101 6001
6201 102 5701
5801 100 1804
1805



600,500

SEE MAP 26 5 30CB

SEE MAP 26 5 30CB

SEE MAP 26 6 25

4,163,000

26 6 25DA