

SE1/4 NE1/4 SEC.25 T.26S. R.6W. W.M.
DOUGLAS COUNTY

REVISED ON
6-8-17

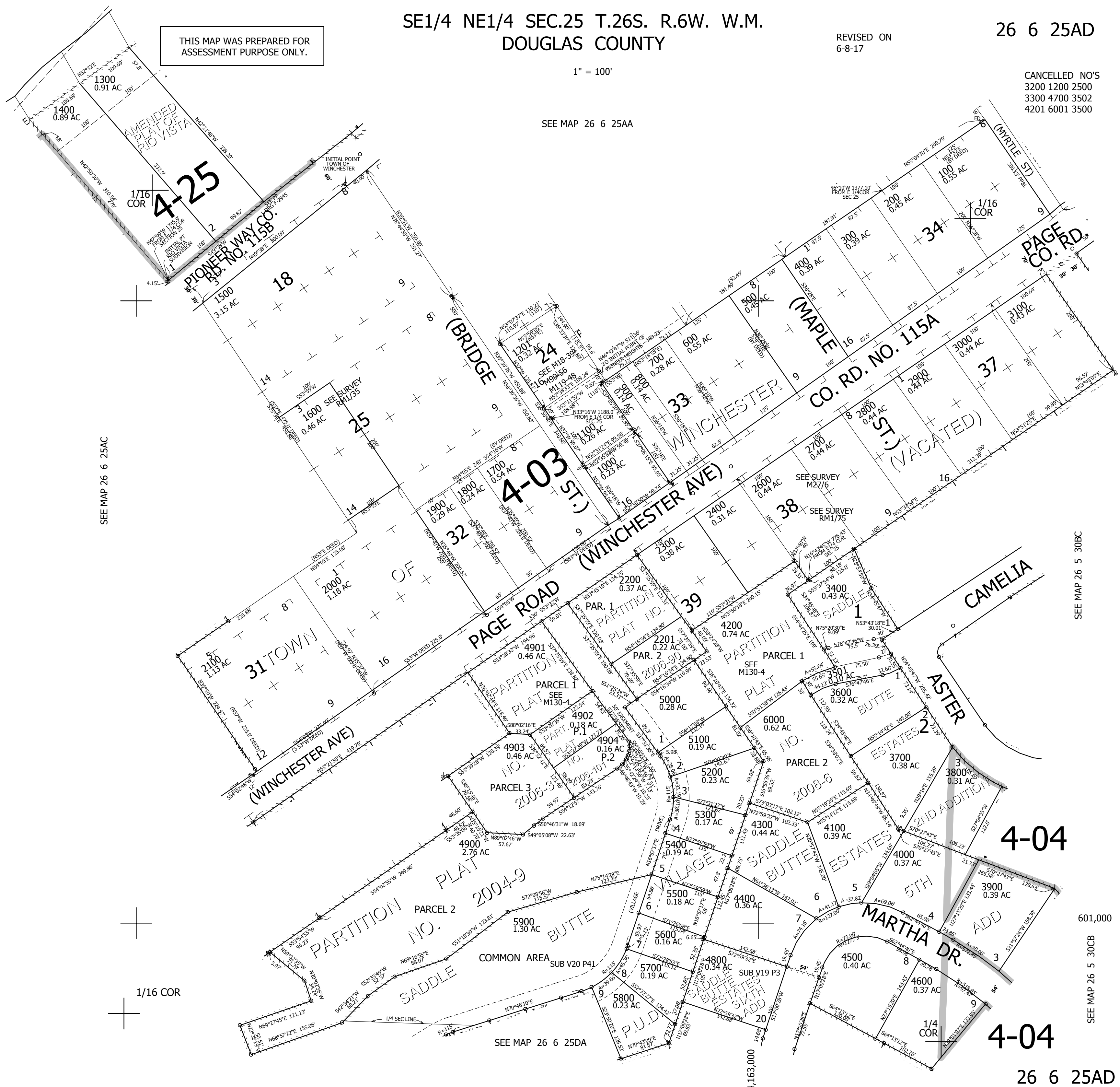
26 6 25AD

THIS MAP WAS PREPARED FOR
ASSESSMENT PURPOSE ONLY.

1" = 100'

CANCELLED NO'S
3200 1200 2500
3300 4700 3502
4201 6001 3500

SEE MAP 26 6 25AA



SEE MAP 26 6 25AC

SEE MAP 26 5 30BC

601,000

SEE MAP 26 5 30CB

4-04

26 6 25AD