

THIS MAP WAS PREPARED FOR ASSESSMENT PURPOSE ONLY.

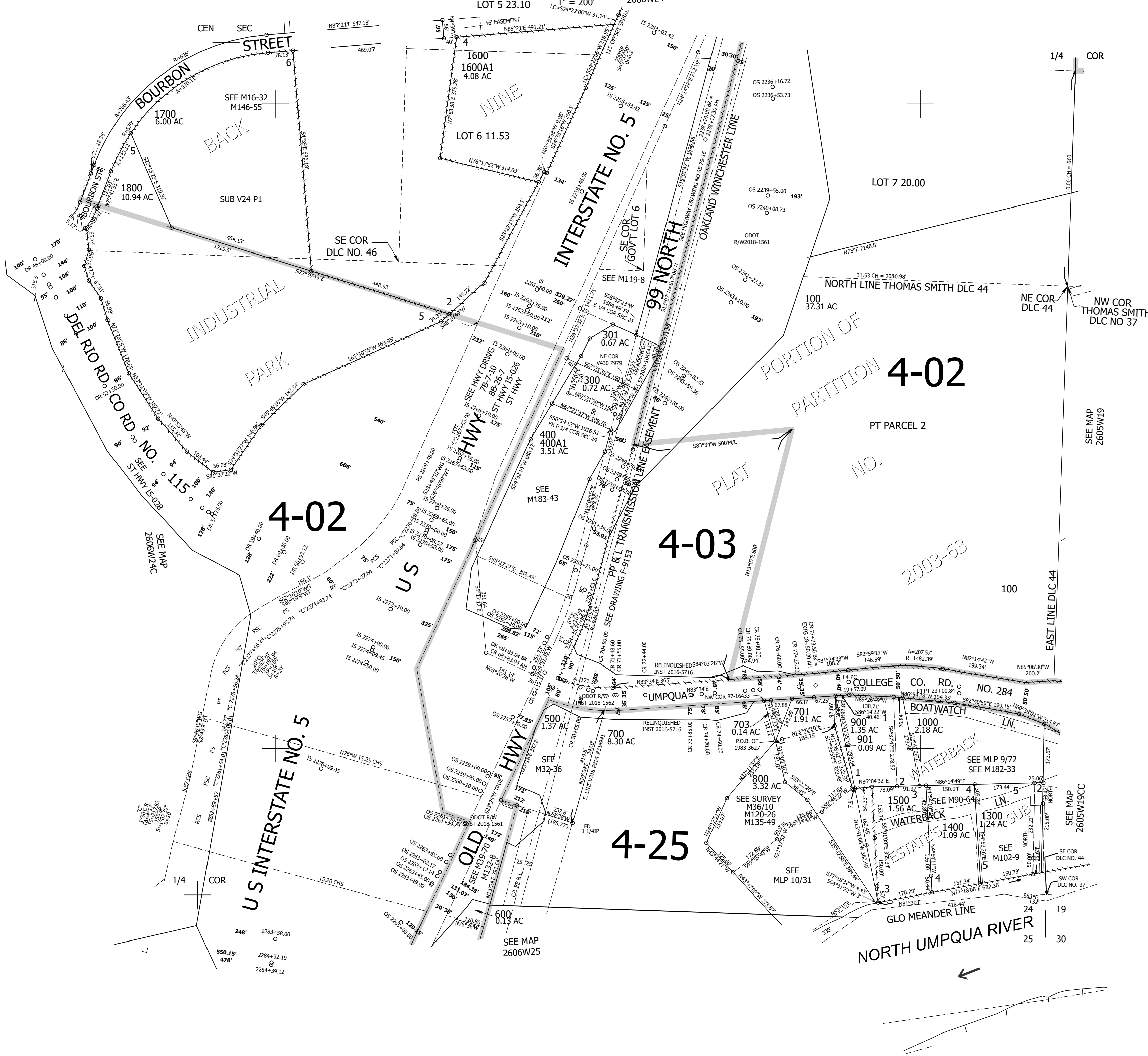
Upper Left:
123°21'37"W 43°17'42"N
4159974E 606484N ft

SE1/4 SEC.24 T.26S. R.06W. W.M.
DOUGLAS COUNTY

Date Exported 2026-06-09

260624D
& INDEX
Roseburg

CANCELLED NOS:
702 1001 1301
704 1002 1401
705 1100 1501
1200 1003 1201
1202 1203 101
708 709 710
801 706 200
201 401 402
202 1004 707



SEE MAP 2605W19

SEE MAP 2605W19CC

SEE COR DLC NO. 44

SEE COR DLC NO. 37

SEE COR DLC NO. 44

SEE COR DLC NO. 37

260624D
& INDEX
Roseburg

Lower Right:
123°20'42"W 43°17'8"N
4163901E 602884N ft