

THIS MAP WAS PREPARED FOR ASSESSMENT PURPOSE ONLY.

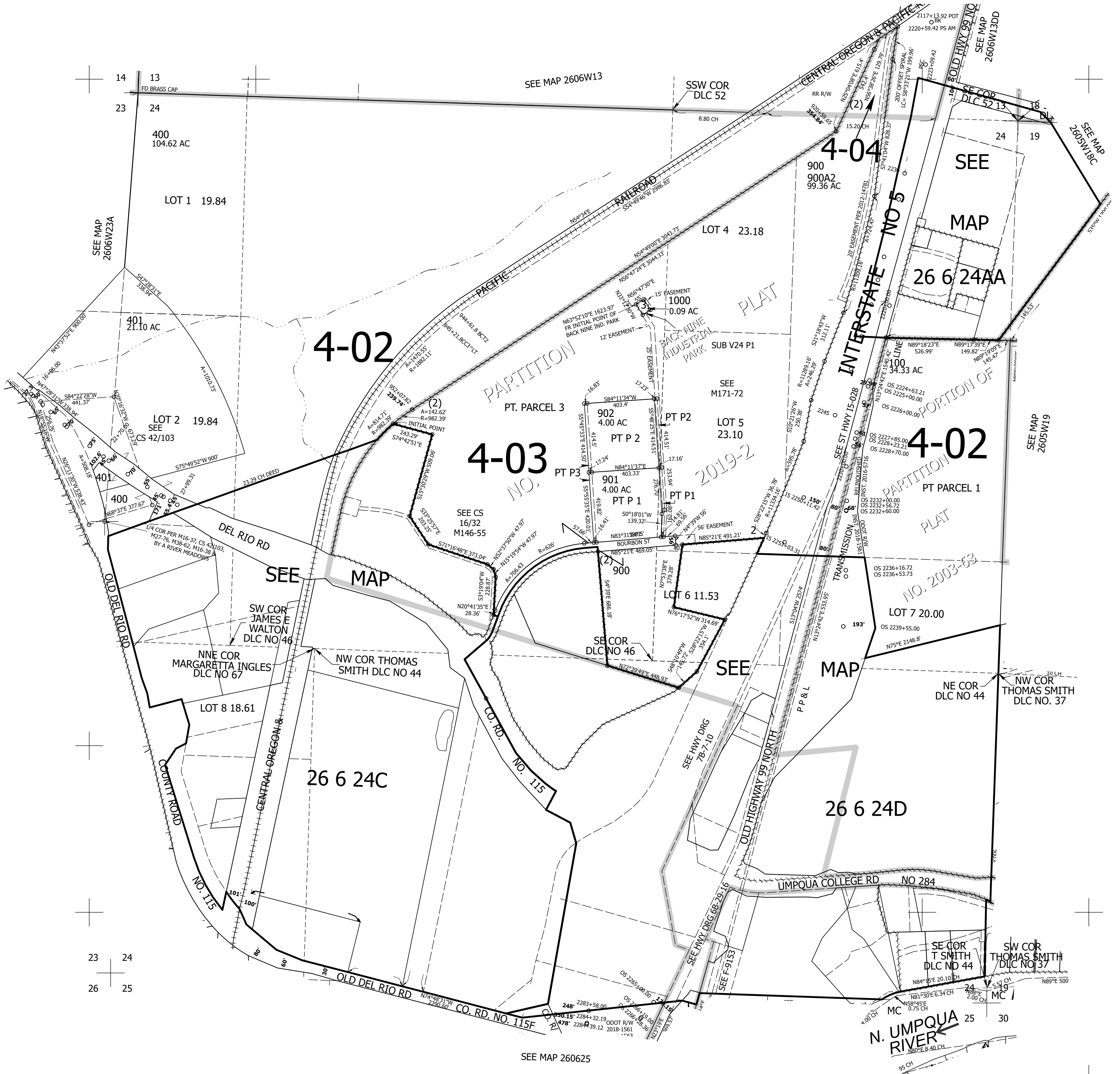
Upper Left:  
123°22'20"W 43°18'13"N  
4156884E 609710N ft

SEC.24 T.26S. R.06W. W.M.  
DOUGLAS COUNTY  
1" = 400'

Date Exported 2025-01-30

260624  
& INDEX  
Roseburg

CANCELLED NOS:  
102 106 700A2  
700A1 500A1 800A1  
501 200 601  
801 300 300A1  
301 302 500  
500A2 500A3 500A4  
600 700 700A3  
800 900A1 903  
904 905 906  
110 111 103A1  
101 103 104  
105 105A1 107  
108 109 112  
112A1



14 13  
23 24

23 24  
26 25

260624  
& INDEX  
Roseburg

Lower Right:  
123°20'31"W 43°17'7"N  
4164733E 602755N ft