

THIS MAP WAS PREPARED FOR ASSESSMENT PURPOSE ONLY.

Upper Left:  
123°22'45"W 43°17'44"N  
4154930E 606862N ft

SE1/4 SEC.23 T.26S. R.06W. W.M.  
DOUGLAS COUNTY  
1" = 200'

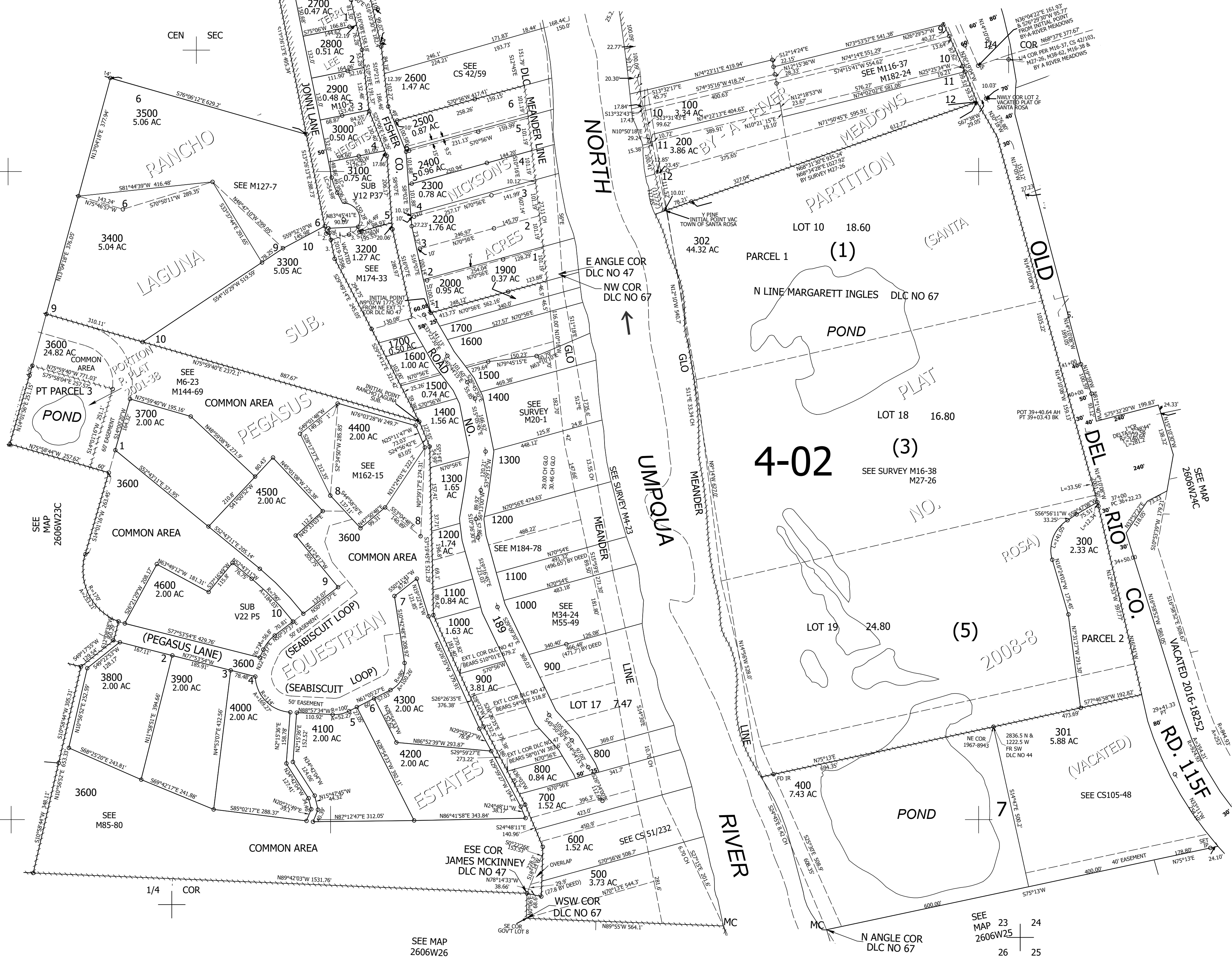
Date Exported 2025-07-07

260623D  
Roseburg

CANCELLED NOS:  
1800 2100 101  
201 102 3401  
3501 2401 3604  
4401 3601 3602  
3603 3605 301A1  
3101 4700

PARCEL 3200  
1. LC= N49°24'32"E 43.35'  
A= 44.84' R= 50'  
2. S19°04'00"E 15.90'  
3. S70°56'00"W 40.33'

PARCEL 3300  
1. S13°26'13"E 23.34'  
2. N76°33'47"E 10'  
3. S13°26'13"E 81.47'



1/4 COR

SEE MAP  
2606W26

SEE MAP  
23 24  
2606W25  
26 25

260623D  
Roseburg

Lower Right:  
123°21'51"W 43°17'11"N  
4158855E 603385N ft