

THIS MAP WAS PREPARED FOR ASSESSMENT PURPOSE ONLY.

Upper Left:  
123°23'28"W 43°17'45"N  
4151797E 607032N ft

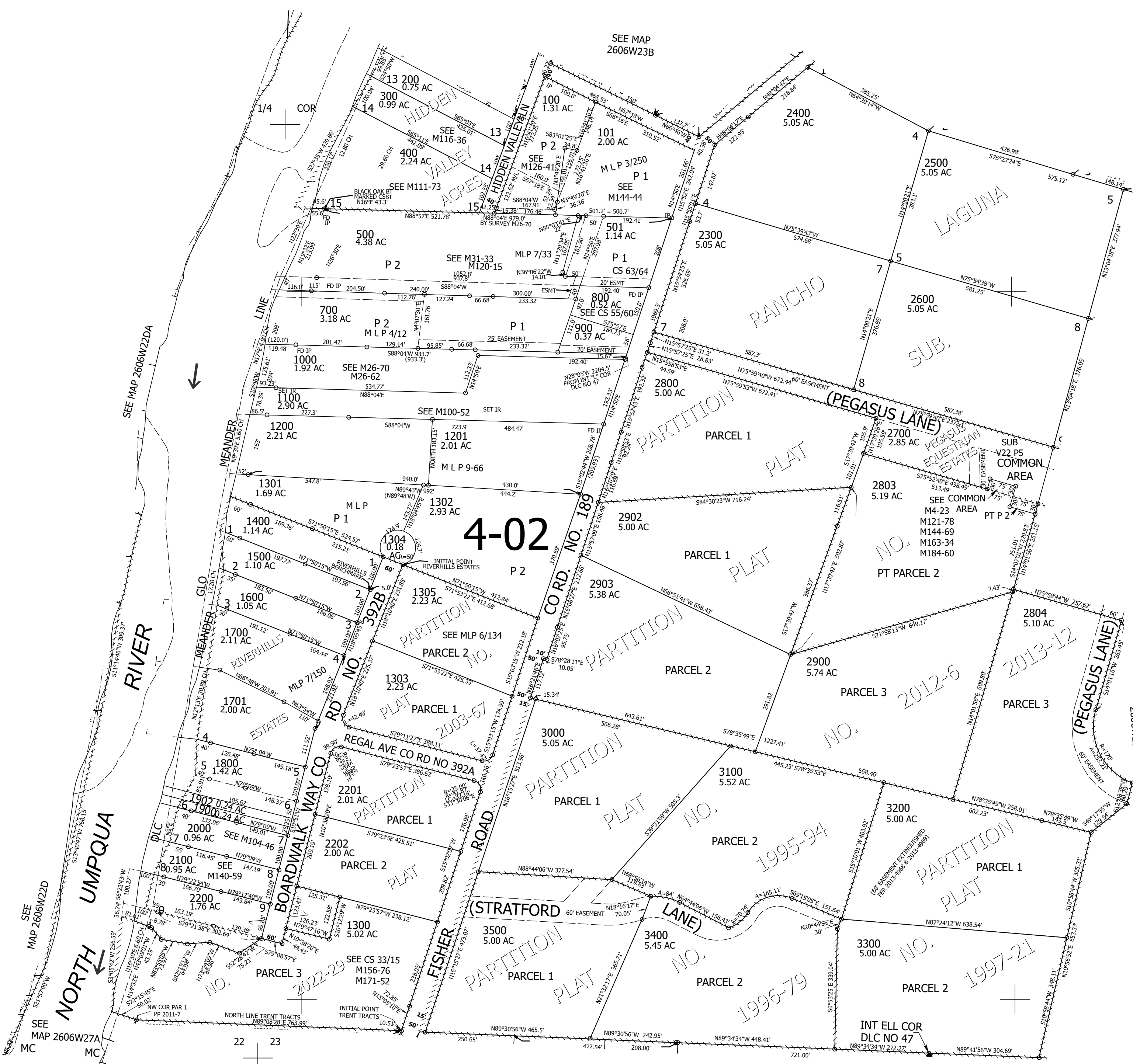
SW1/4 SEC.23 T.26S. R.06W. W.M.  
DOUGLAS COUNTY  
1" = 200'

Date Exported 2025-07-07

260623C  
& INDEX

CANCELLED NOS:  
102 201 1901  
502 503 600  
103 104 2801  
2901 2701 2802  
1306 701 2702  
2805 3600

CEN SEC



SEE MAP 2606W22D  
SEE MAP 2606W27A  
MC

SEE MAP 2606W22DA

SEE MAP 2606W23B

SEE MAP 2606W23D

SEE MAP 2606W26B

SEE MAP 2606W26

22 23  
27 26

1/4 COR

Lower Right:  
123°22'33"W 43°17'12"N  
4155722E 603554N ft

260623C  
& INDEX