

THIS MAP WAS PREPARED FOR ASSESSMENT PURPOSE ONLY.

Upper Left:
123°23'36"W 43°17'42"N
4151195E 606701N ft

NE1/4 SE1/4 SEC.22 T.26S. R.06W. W.M.
DOUGLAS COUNTY
1" = 100'

Date Exported 2024-03-28

260622DA

CANCELLED NOS:
601 701 1104 400 602 501

1/16 COR

1/4 COR

PARTITION PARCEL 3
SEE M108-40

PLAT

PARCEL 1

PT PARCEL 2

1/16 COR

1993-77

HARBOR

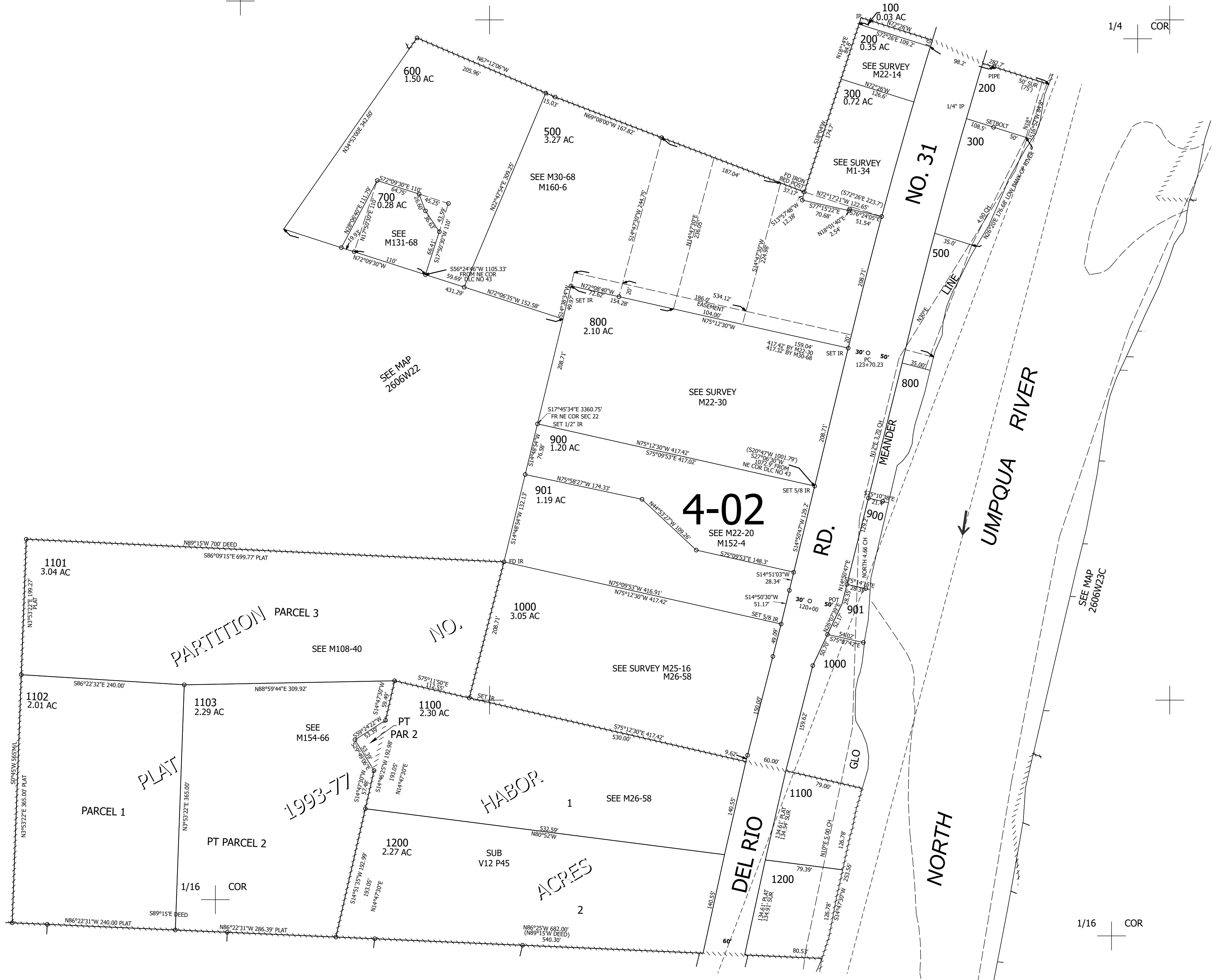
ACRES

DEL RIO

NORTH

SEE MAP 2606W22D

1/16 COR



260622DA

Lower Right:
123°23'8"W 43°17'25"N
4151158E 604921N ft