

THIS MAP WAS PREPARED FOR ASSESSMENT PURPOSE ONLY.

Upper Left:
123°25'42"W 43°17'45"N
4141855E 607343N ft

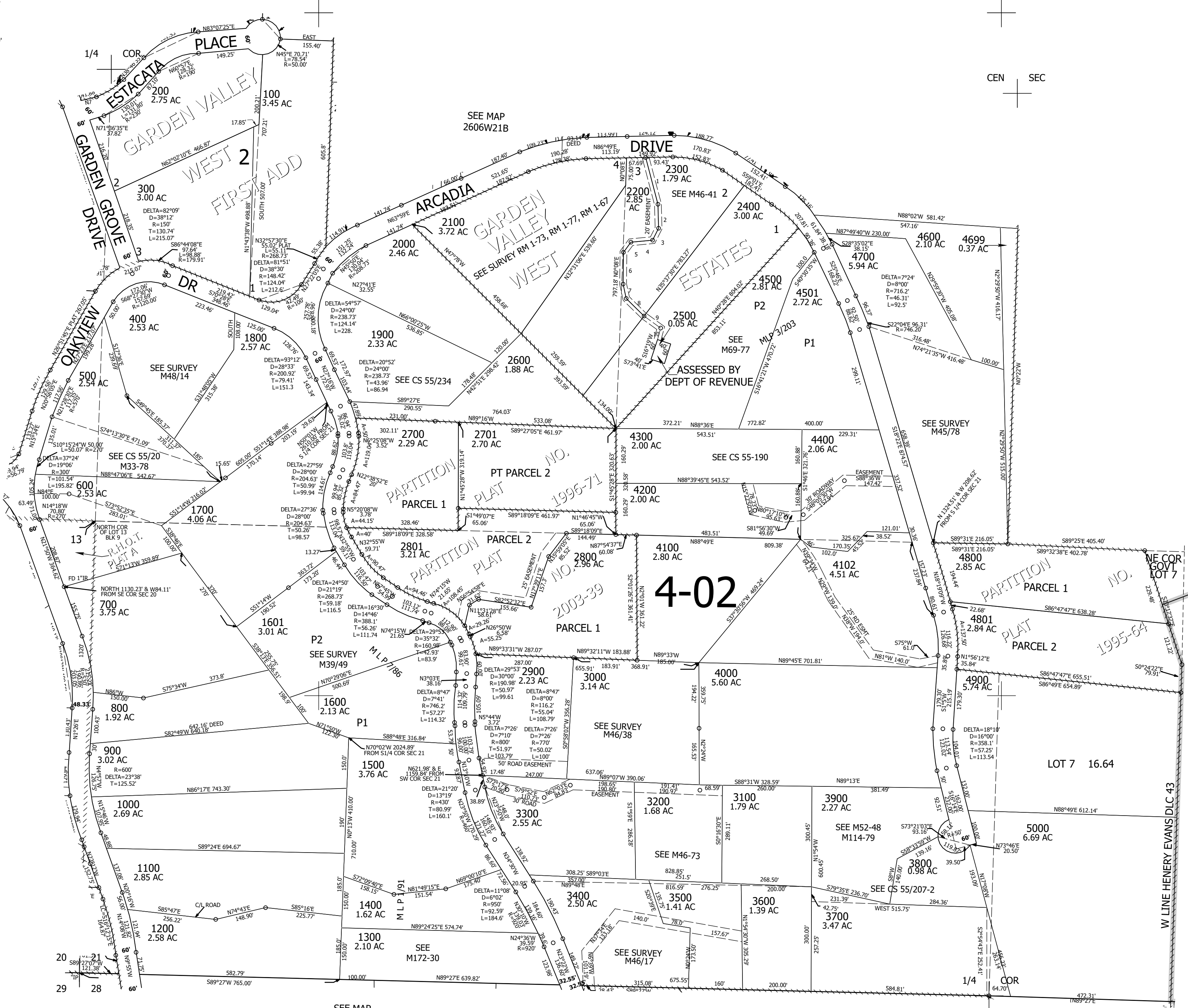
SW1/4 SEC.21 T.26S. R.06W. W.M.
DOUGLAS COUNTY
1" = 200'

Date Exported 2026-05-26

260621C
& INDEX

CANCELLED NOS:
4101 3901 2702

- PARCELS 2100 & 2200
- 1. S15°30'E 138.97'
- 2. S3°14'E 74.24'
- 3. S28°33'W 38.19'
- 4. S81°08'W 63.41'
- 5. S34°14'W 35.33'
- 6. S0°20'E 93.87'
- 7. S11°09'E 45.76'
- 8. S47°17'E 71.97'
- 9. S57°17'E 61.88'
- 10. S9°53'W 34.39'



SEE MAP
2606W28BB

SEE MAP
2606W28BA

SEE MAP
2606W28A

260621C
& INDEX

Lower Right:
123°24'47"W 43°17'11"N
4145782E 603743N ft