

THIS MAP WAS PREPARED FOR ASSESSMENT PURPOSE ONLY.

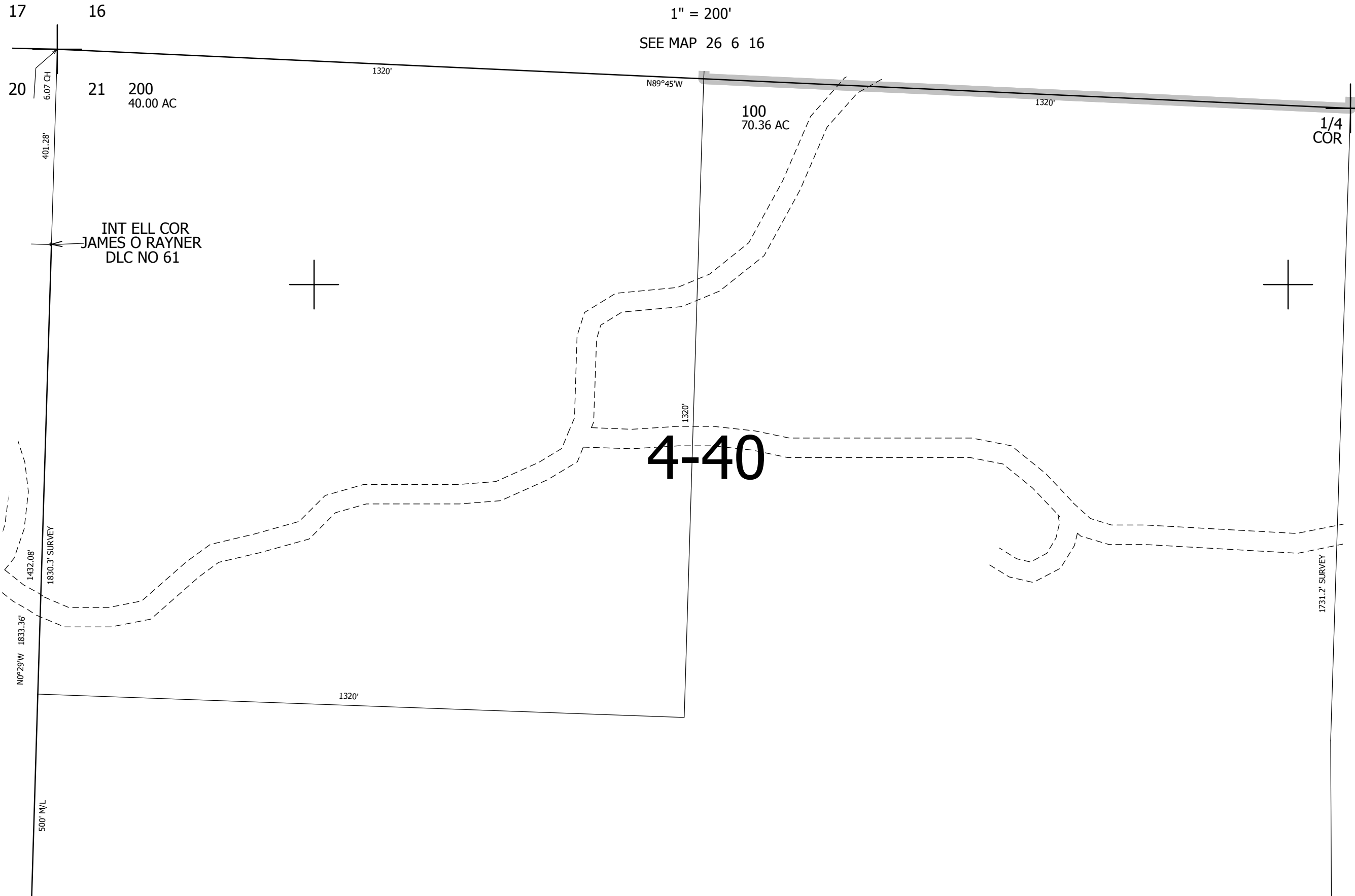
NW1/4 SEC.21 T.26S. R.6W. W.M. DOUGLAS COUNTY

REVISED ON 3-27-14

26 6 21B

1" = 200'

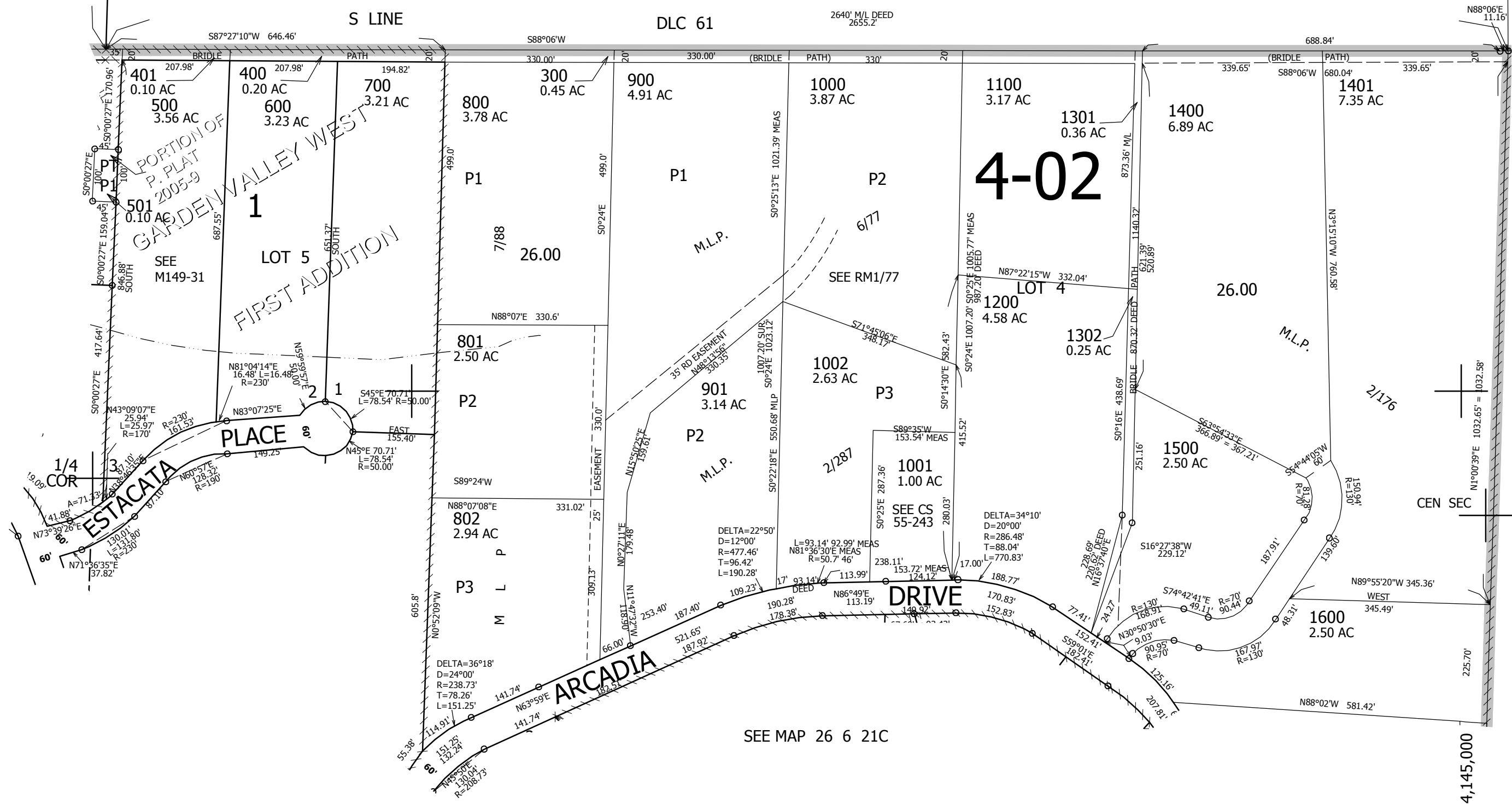
SEE MAP 26 6 16



CANCELLED NO'S 301 402 1300 1700 1402

SEE MAP 26 6 20A

SEE MAP 26 6 21



607,000

SEE MAP 26 6 21C

26 6 21B

4,145,000