

THIS MAP WAS PREPARED FOR ASSESSMENT PURPOSE ONLY.

Upper Left:
123°26'55"W 43°17'44"N
4136498E 607430N ft

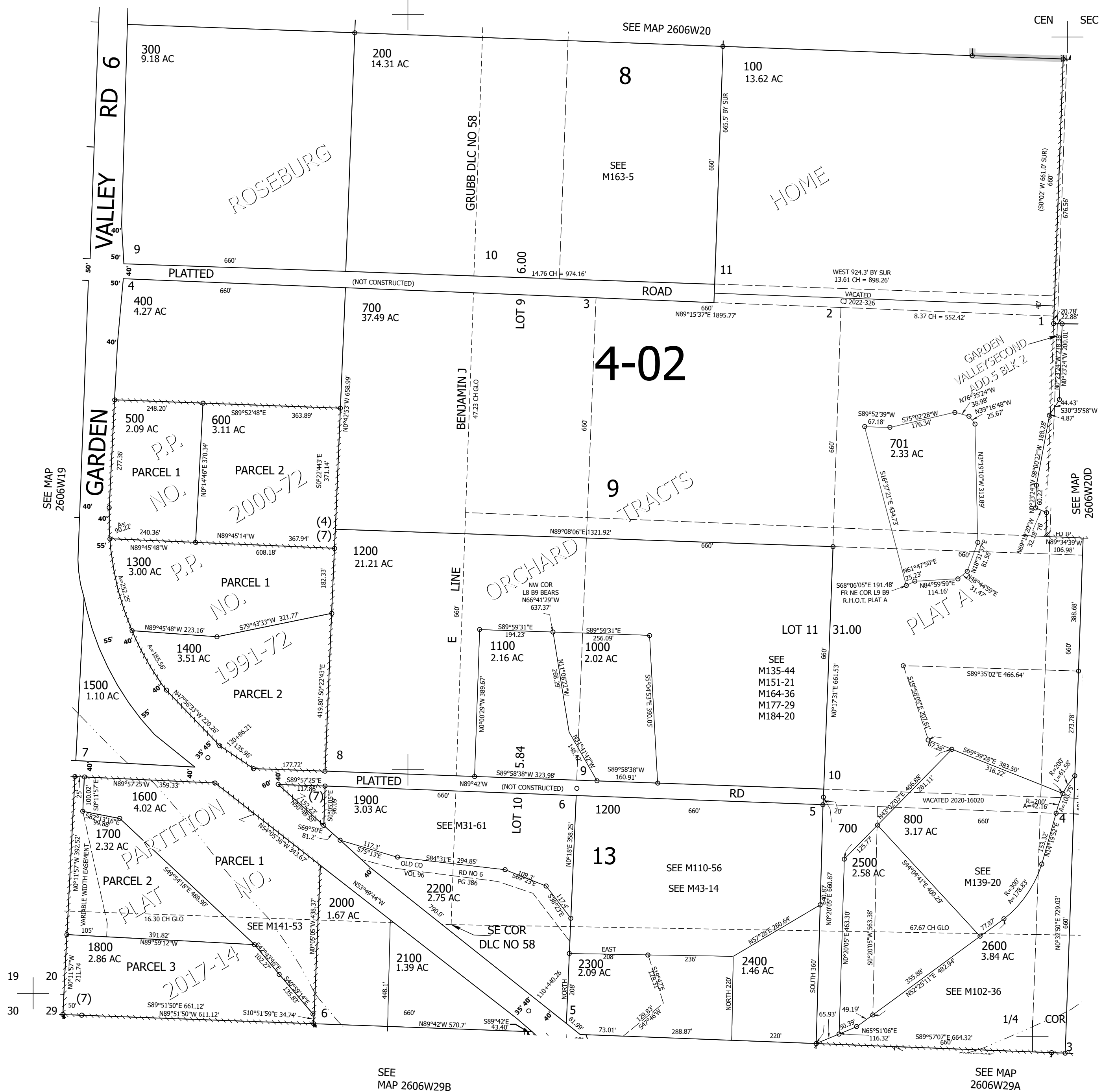
SEC.20 T.26S. R.6W. W.M.
DOUGLAS COUNTY
1" = 200'

Date Exported 2025-11-26

260620C
& INDEX

CANCELLED NOS:
701 1101 1102
1105 1100
1600 THRU 3301
802

1/4 COR



260620C
& INDEX

Lower Right:
123°26'W 43°17'10"N
4140425E 603830N ft