

THIS MAP WAS PREPARED FOR ASSESSMENT PURPOSE ONLY.

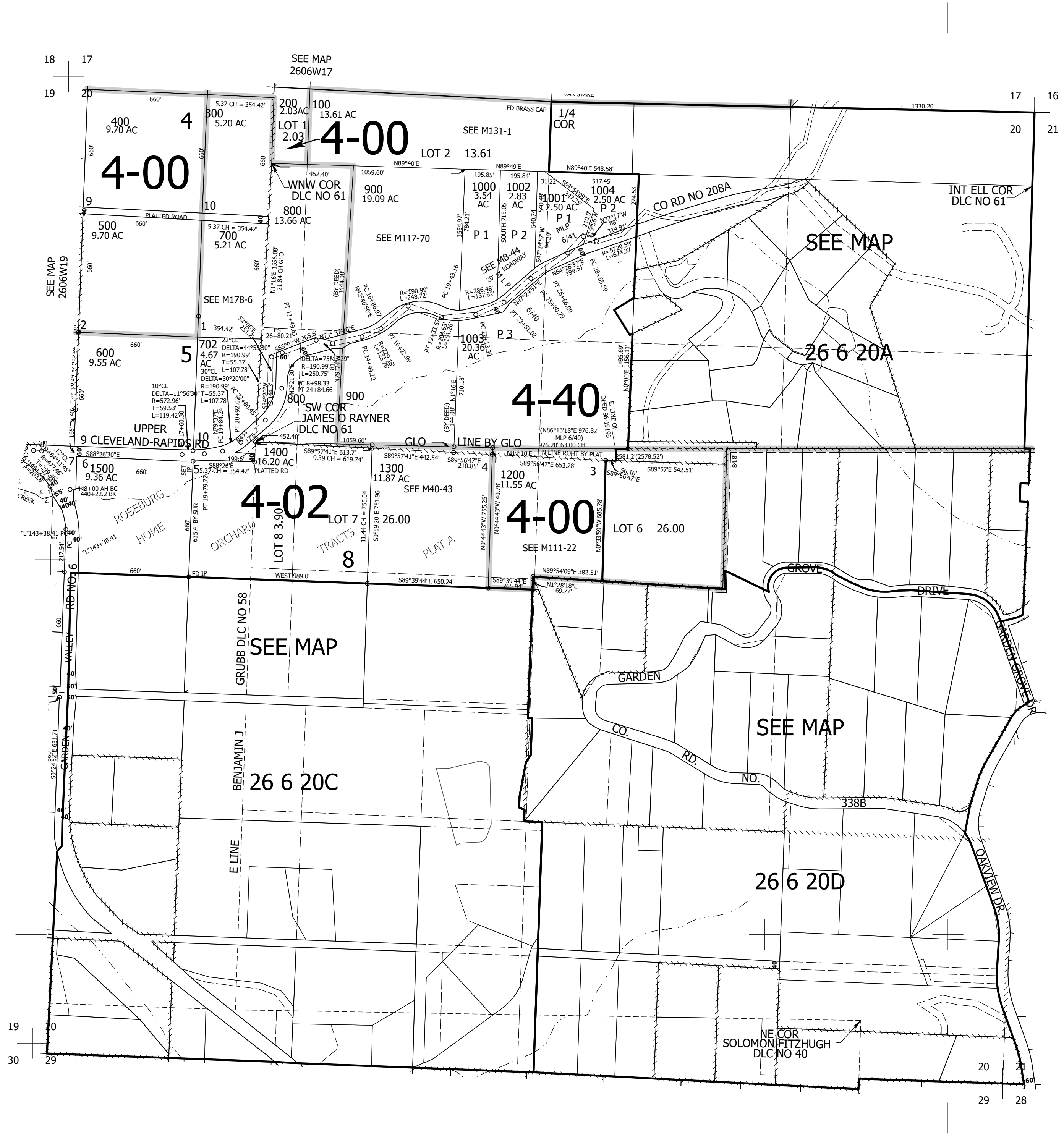
Upper Left:
123°27'5"W 43°18'13"N
4135811E 610367N ft

SEC.20 T.26S. R.06W. W.M.
DOUGLAS COUNTY
1" = 400'

Date Exported 2026-03-09

260620
& INDEX

CANCELLED NOS:
701 1101 1102
1105 1100
1600 THRU 3301



260620
& INDEX

Lower Right:
123°25'16"W 43°17'7"N
4143660E 603412N ft