

THIS MAP WAS PREPARED FOR ASSESSMENT PURPOSE ONLY.

Upper Left:
123°28'15"W 43°18'18"N
4130655E 611064N ft

SEC.19 T.26S. R.06W. W.M.
DOUGLAS COUNTY
1" = 400'

Date Exported 2025-02-13

260619

CANCELLED NOS:
3200 5101 7000
6803 6805 7103
300 5701 5702
4801

- PP 1994-101
1. S0°06'48"W 90.85'
 2. S89°59'55"W 312.95'
 3. S89°59'55"W 64.89'
 4. N25°16'35"W 134.23'
 5. N26°18'35"W 523.52'
 6. N63°38'04"E 109.85'
 7. N26°18'35"W 5.98'
 8. EAST 259.72'
 9. EAST 120.83'
 10. EAST 192.14'
 11. S0°06'48"W 553.96'
 12. EAST 312.95'
 13. S0°06'41"W 553.96'

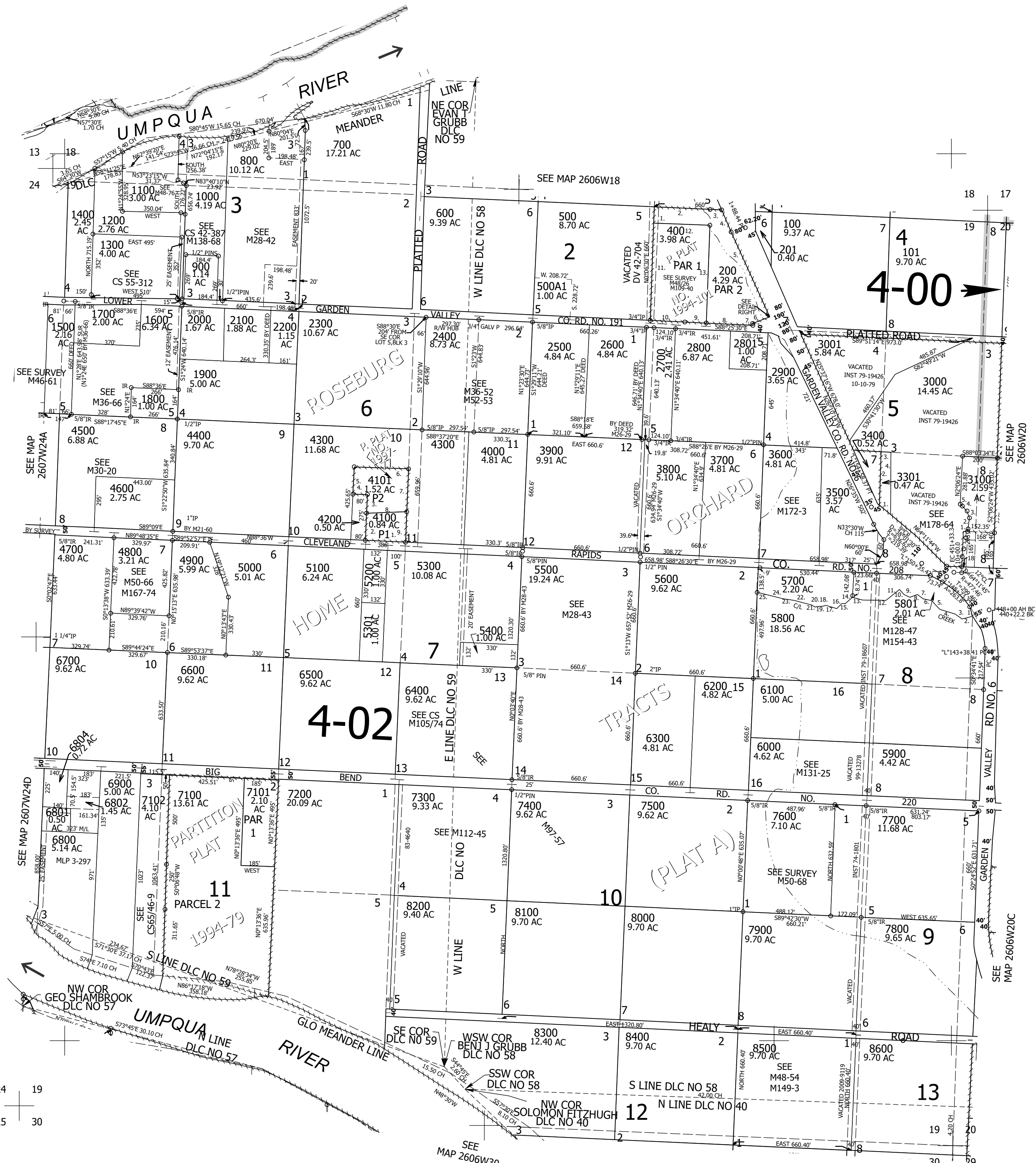
- TAXLOT 3301
1. 80'
 2. 300'
 3. 60'
 4. 350'

- PP 1997-77
1. S88°36'E 227'
 2. N1°24'E 152.66'
 3. N1°24'E 97.34'
 4. N88°36'W 80'
 5. N1°24'E 151.14'
 6. N88°36'W 307'
 7. S1°24'W 229.15'
 8. N86°32'03"E 227.84'
 9. S1°24'W 171.98'

- TAXLOT 5800
C/L OF UNNAMED CREEK
1. S55°02'35"W 20.81'
 2. S72°59'32"W 49.66'
 3. N58°36'16"W 48.99'
 4. N76°05'35"W 90.1'
 5. N45°57'37"W 67.12'
 6. N81°29'27"W 47.96'
 7. N57°15'07"W 40.94'
 8. S67°00'53"W 45.34'
 9. N67°22'12"W 37'
 10. N45°15'49"W 37.79'
 11. S48°07'18"W 97.63'
 12. N87°42'25"E 133.57'
 13. N77°51'05"W 57.17'
 14. S45°46'32"W 53.73'
 15. S87°57'07"W 19.83'
 16. S41°39'27"W 40.46'
 17. N76°22'14"W 63.19'
 18. S72°31'09"W 19.77'
 19. S85°34'20"W 30.75'
 20. S67°46'53"W 12.35'
 21. N61°59'23"W 22.49'
 22. N78°21'51"W 102.21'
 23. N84°35'39"W 64.4'
 24. N79°05'23"W 106.39'
 25. N79°05'23"W 43.51'

- TAXLOT 3100
1. N9°36'49"E 14.7'
 2. N7°29'19"E 62.67'
 3. N20°21'03"W 40.92'
 4. N42°46'06"W 38.28'
 5. N49°01'05"W 16.45'

DETAIL



24 19
25 30

260619

Lower Right:
123°26'26"W 43°17'12"N
4138504E 604108N ft