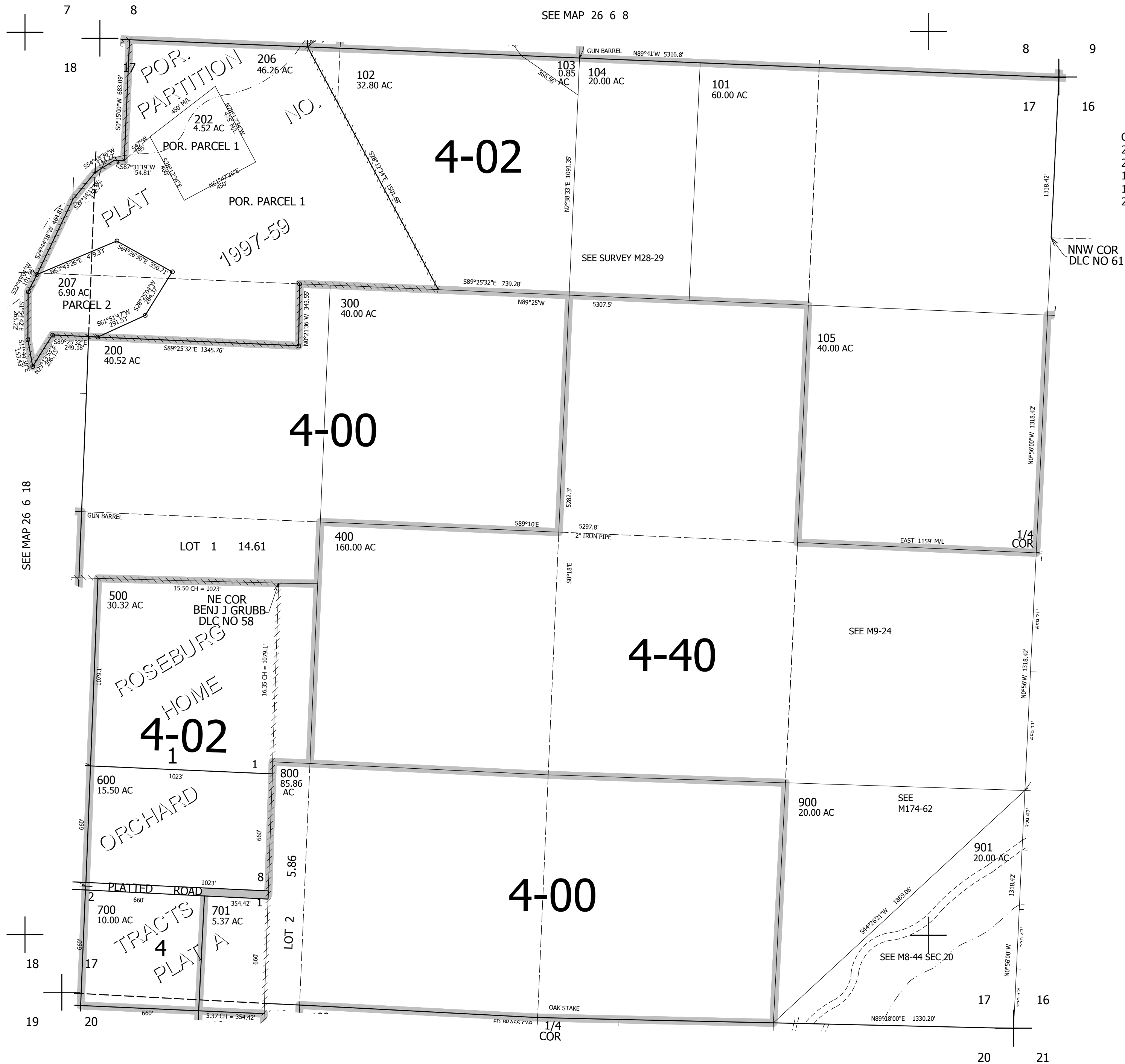


THIS MAP WAS PREPARED FOR ASSESSMENT PURPOSE ONLY.

SEC.17 T.26S. R.6W. W.M.
DOUGLAS COUNTY
1" = 400'

REVISED ON
2-22-12

26 6 17



CANCELLED NO'S
205 203 100
205M1 204 100M1
101M1 102M1 103M1
104M1 105M1 202M1
206M1 207M1 201

NNW COR
DLC NO 61

SEE MAP 26 6 18

SEE MAP 26 6 16

610,000

SEE MAP 26 6 20

4,142,000

26 6 17