

THIS MAP WAS PREPARED FOR ASSESSMENT PURPOSE ONLY.

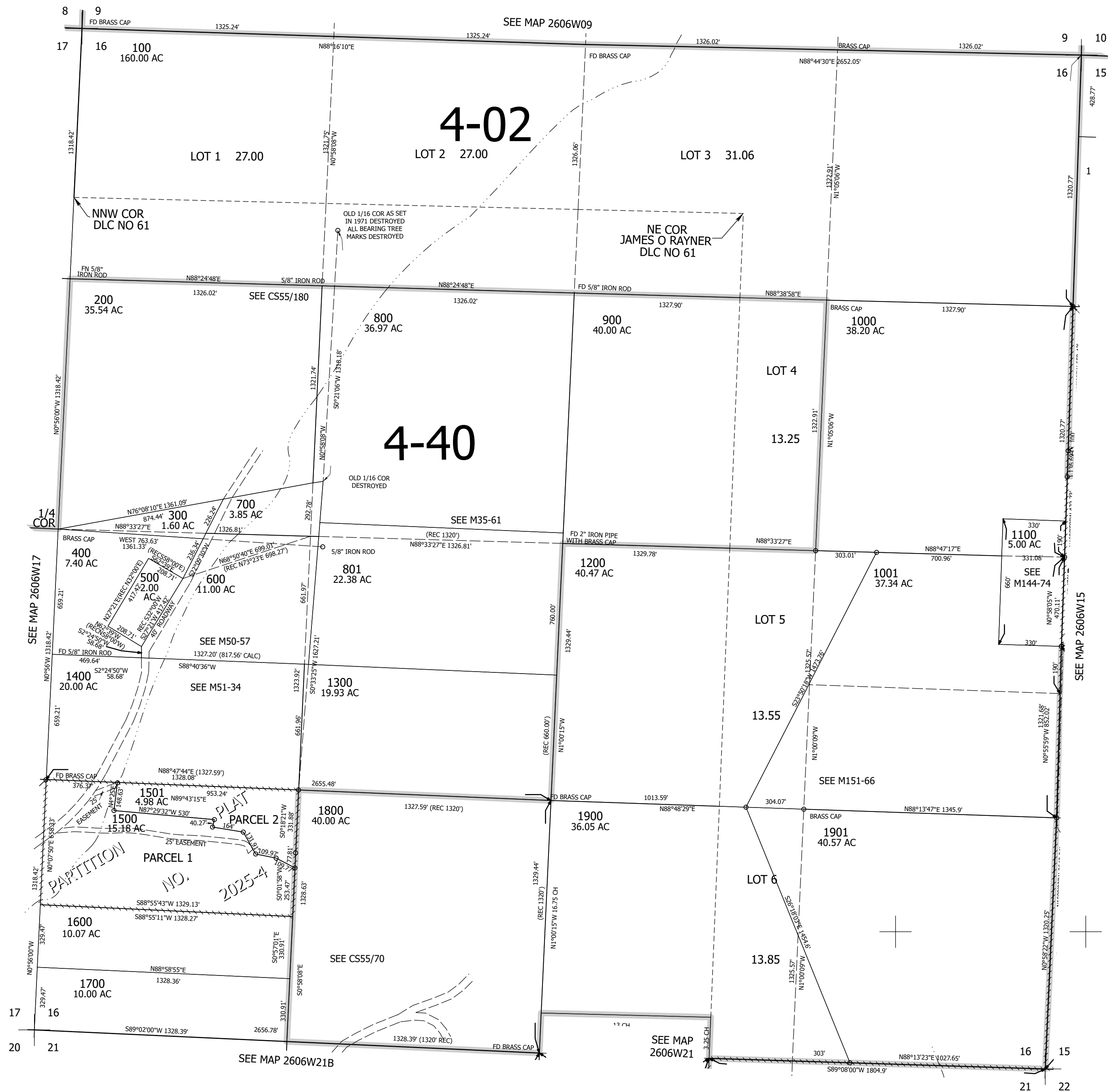
Upper Left:
123°25'53"W 43°19'5"N
4141335E 615529N ft

SEC.16 T.26S. R.06W. W.M.
DOUGLAS COUNTY
1" = 400'

Date Exported 2025-02-24

260616

CANCELLED NOS:
701 702 1601
1002 1201 1902



260616

Lower Right:
123°24'4"W 43°17'59"N
4149184E 608574N ft