

THIS MAP WAS PREPARED FOR ASSESSMENT PURPOSE ONLY.

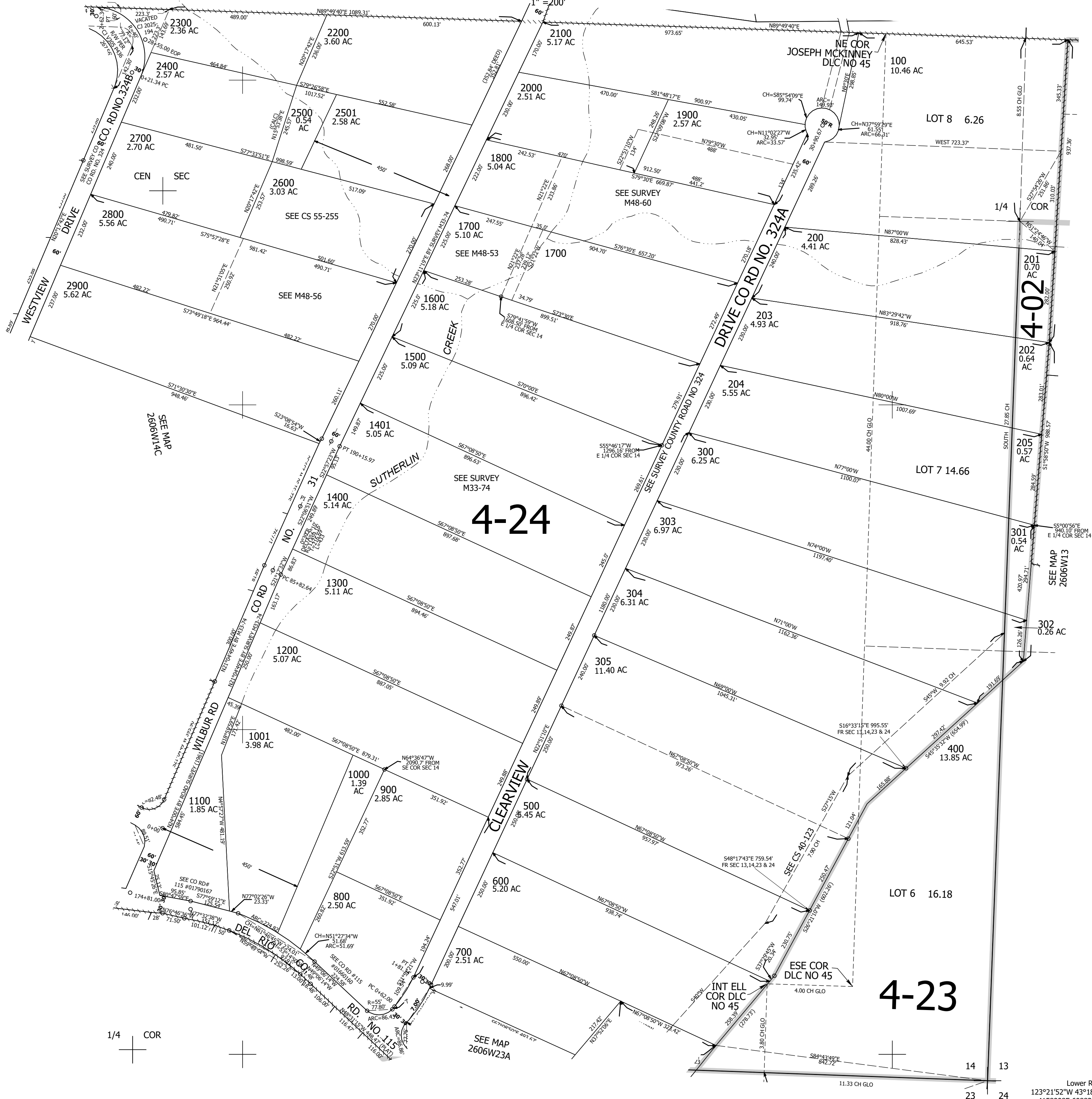
Upper Left:
123°22'47"W 43°18'38"N
4154983E 612311N ft

SE1/4 SEC.14 T.26S. R.06W. W.M.
DOUGLAS COUNTY

Date Exported 2025-02-27

260614D

CANCELLED NOS:
306



1/4 COR

14 13

23 24

Lower Right:
123°21'52"W 43°18'5"N
4158908E 608833N ft

260614D