

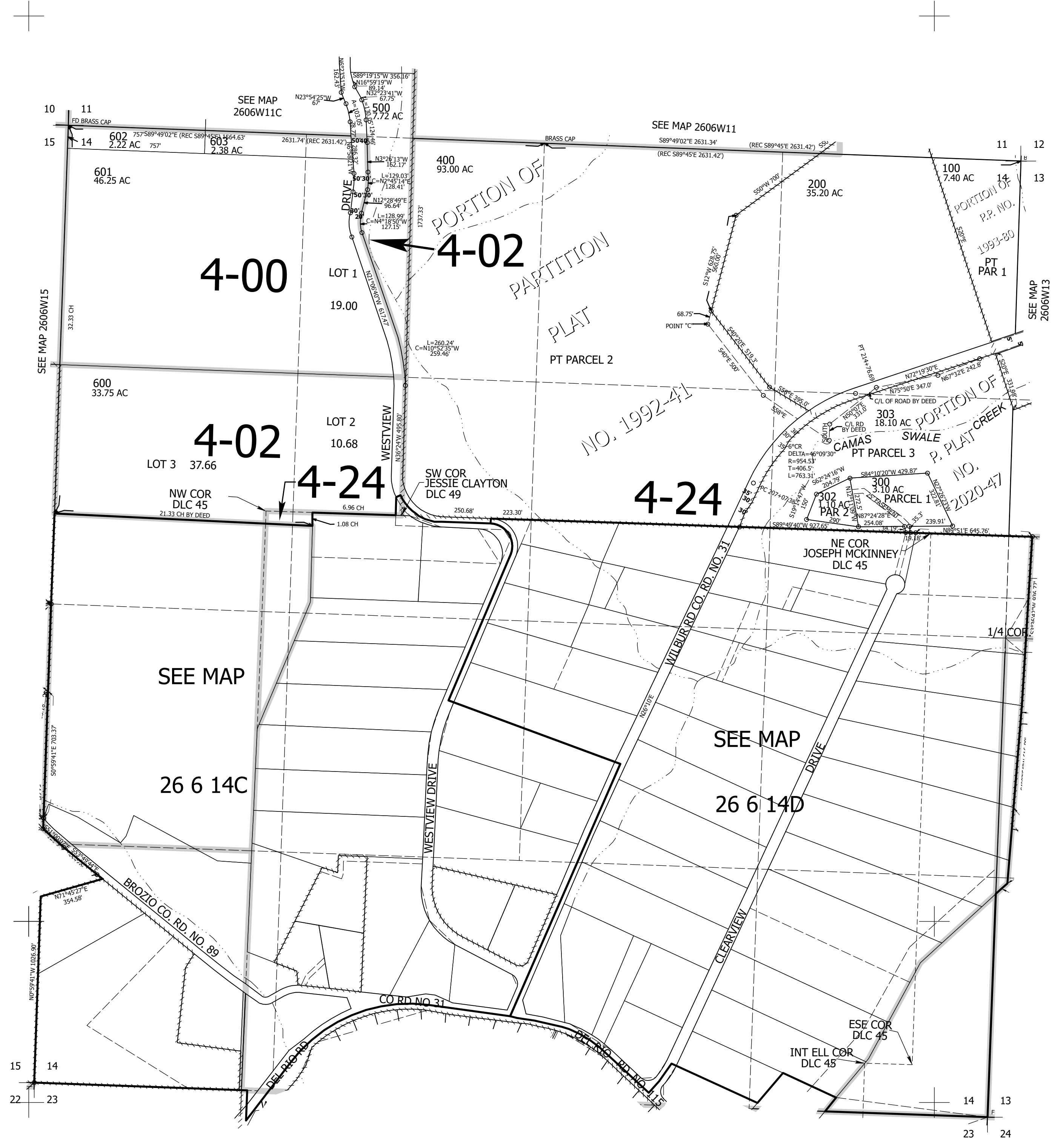
THIS MAP WAS PREPARED FOR ASSESSMENT PURPOSE ONLY.

Upper Left:  
123°23'31"W 43°19'7"N  
4151861E 615285N ft

SEC.14 T.26S. R.06W. W.M.  
DOUGLAS COUNTY  
1" = 400'

Date Exported 2025-02-27

CANCELLED NOS:  
301 200M1



Lower Right:  
123°21'41"W 43°18'11"N  
4159710E 608330N ft