

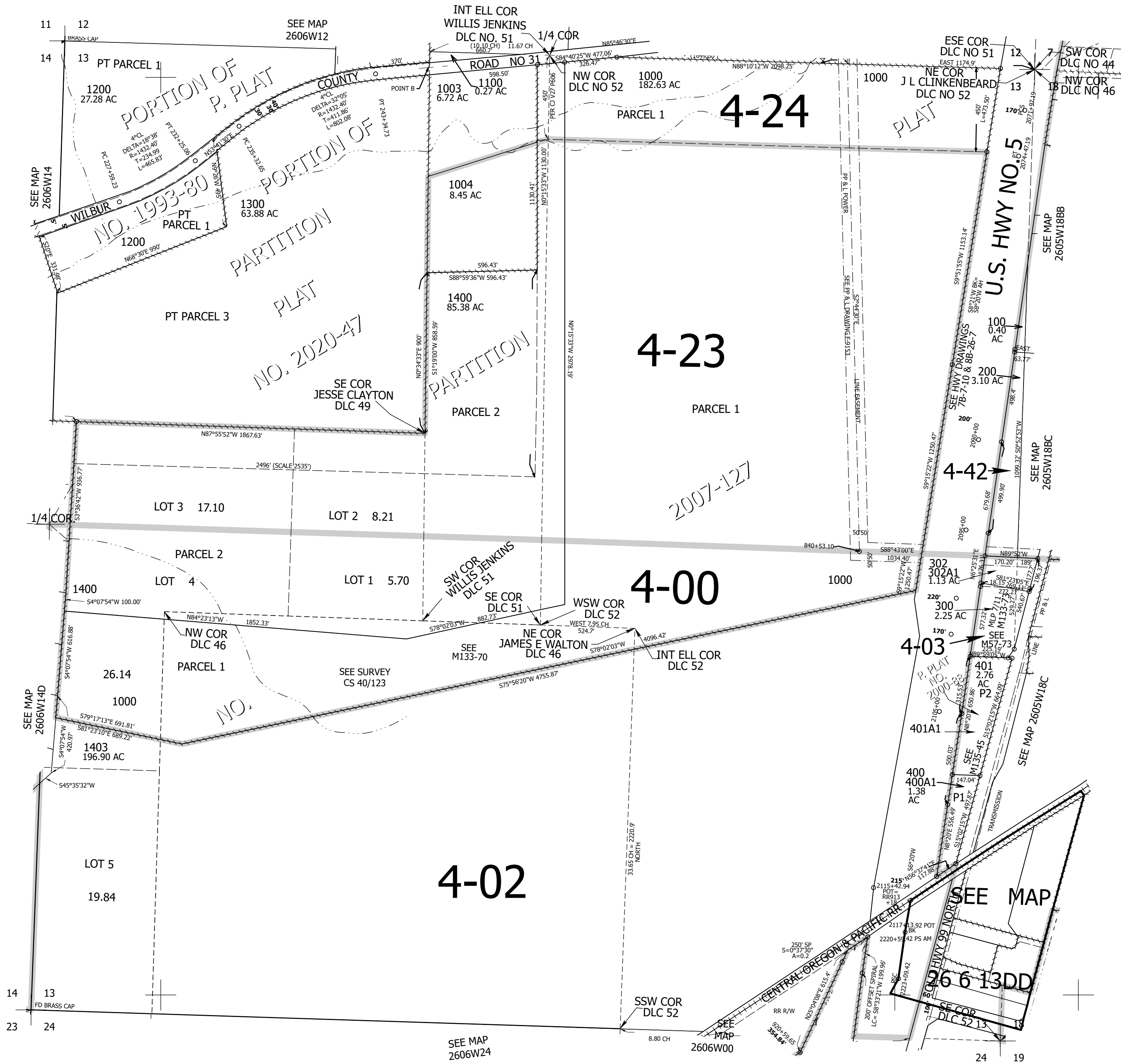
THIS MAP WAS PREPARED FOR ASSESSMENT PURPOSE ONLY.

Upper Left:
123°22'17"W 43°19'6"N
4157329E 615010N ft

SEC. 13 T.26S. R.6W. W.M.
DOUGLAS COUNTY
1" = 400'

Date Exported 2026-03-04

CANCELLED NOS:
1402 503 1006
504 301 506
801 701 801M1
1201 507 508
509 1500M1 800M1
1500 500 501
502 505 600
700 800 900
303 304 200A1
1007 1108 1009
1005 1401 1002
1001 1404 1000A1



Lower Right:
123°20'27"W 43°18'N
4165179E 608055N ft