

THIS MAP WAS PREPARED FOR ASSESSMENT PURPOSE ONLY.

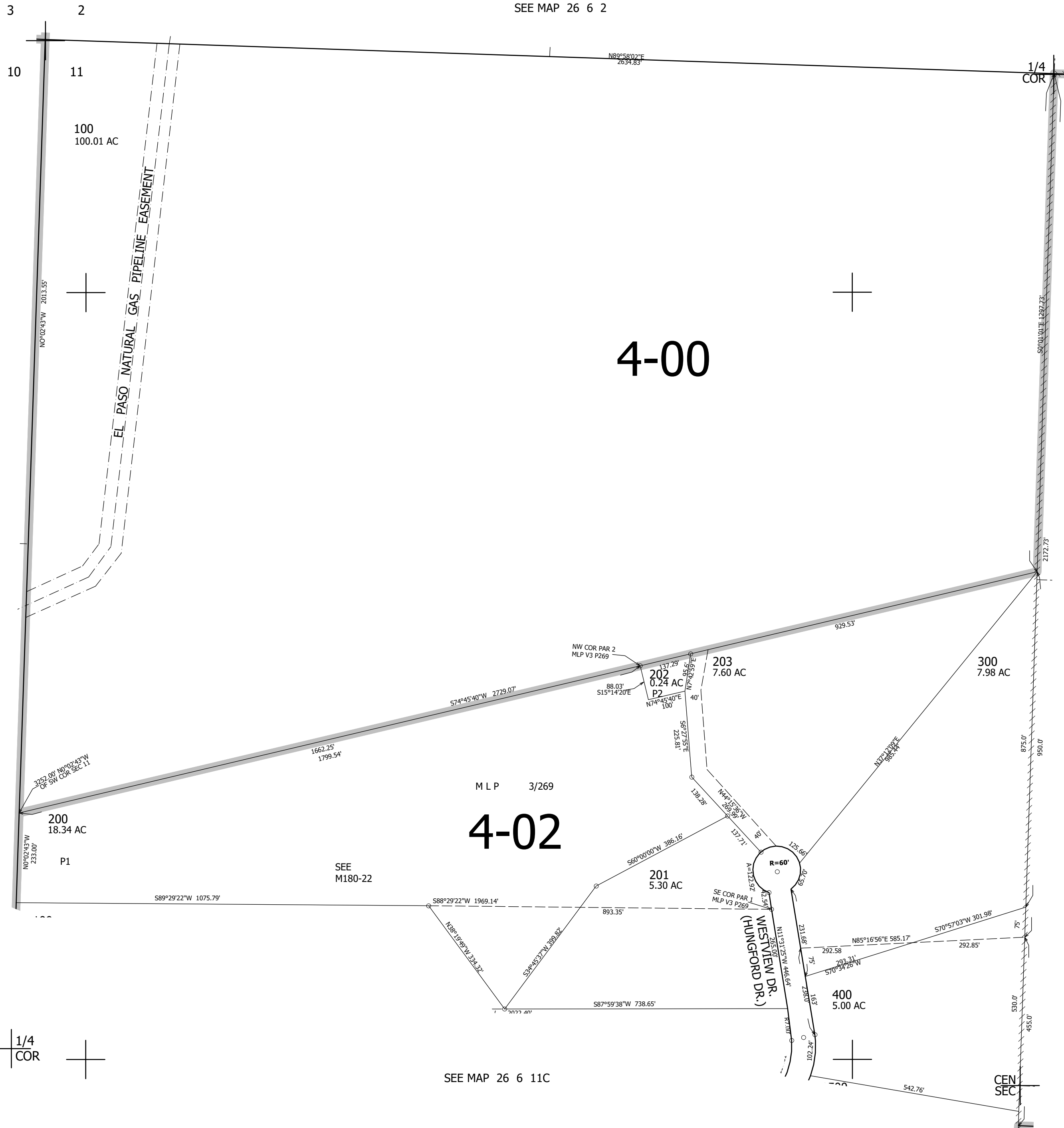
NW1/4 SEC.11 T.26S. R.6W. W.M.  
DOUGLAS COUNTY

1" = 200'

REVISED ON  
12-14-21

26 6 11B

SEE MAP 26 6 2



CANCELLED NO'S  
204 205

SEE MAP 26 6 10

SEE MAP 26 6 11

1/4  
COR

SEE MAP 26 6 11C

617,000

4,155,500

26 6 11B