

THIS MAP WAS PREPARED FOR ASSESSMENT PURPOSE ONLY.

Upper Left:
123°28'15"W 43°19'57"N
4131009E 621135N ft

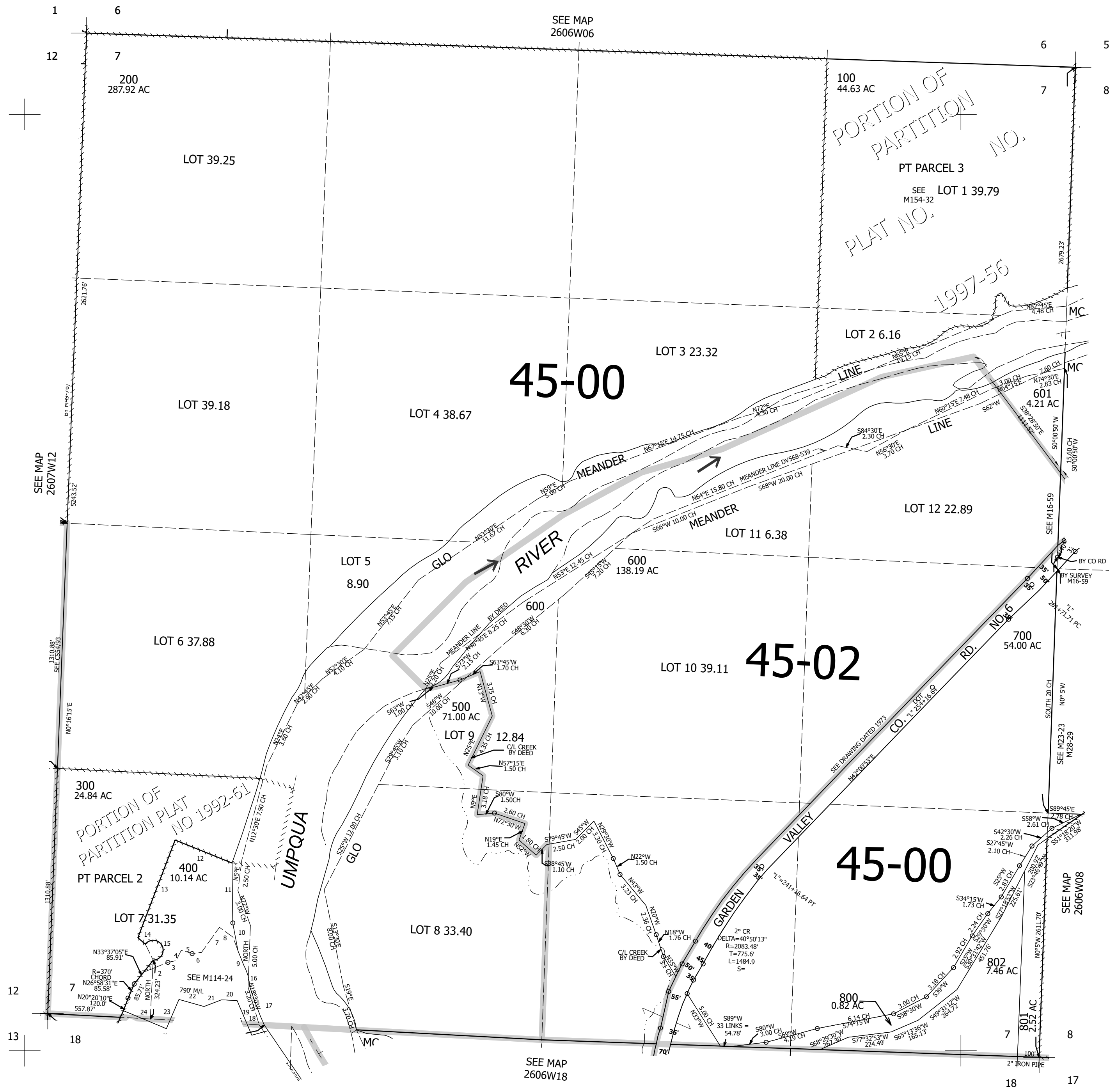
SEC.07 T.26S. R.06W. W.M.
DOUGLAS COUNTY
1" = 400'

Date Exported 2023-06-26

260607

CANCELLED NOS:
302 301 801M1

- PARCEL 400
1. S36°23'50"W 85'
 2. N65°48'55"E 143.55'
 3. N77°19'55"E 39.81'
 4. N27°44'E 67.99'
 5. S78°58'45"E 57.03'
 6. N82°59'15"E 54.53'
 7. N32°01'40"E 166.63'
 8. S58°13'35"E 87.4'
 9. S24°38'55"E 47.86'
 10. N10°36'05"W 112.68'
 11. N3°02'40"W 319.26'
 12. N71°13'25"W 324.36'
 13. S18°46'35"W 556.08'
 14. S53°36'10"E 48.8'
 15. L=203.45' R=50'
 - LC=S25°28'30"E 94.53'
 16. S18°51'21"E 342.1'
 17. S43°09'51"E 196.83'
 18. S74°21'59"W 156.1'
 19. N25°58'48"W 198.67'
 20. S86°44'12"W 88.98'
 21. S68°23'20"W 100.87'
 22. N76°15'05"W 132.36'
 23. S20°42'55"W 173.34'
 24. N69°07'49"W 258.87'



260607

Lower Right:
123°26'26"W 43°18'51"N
4138858E 614180N ft