

THIS MAP WAS PREPARED FOR ASSESSMENT PURPOSE ONLY.

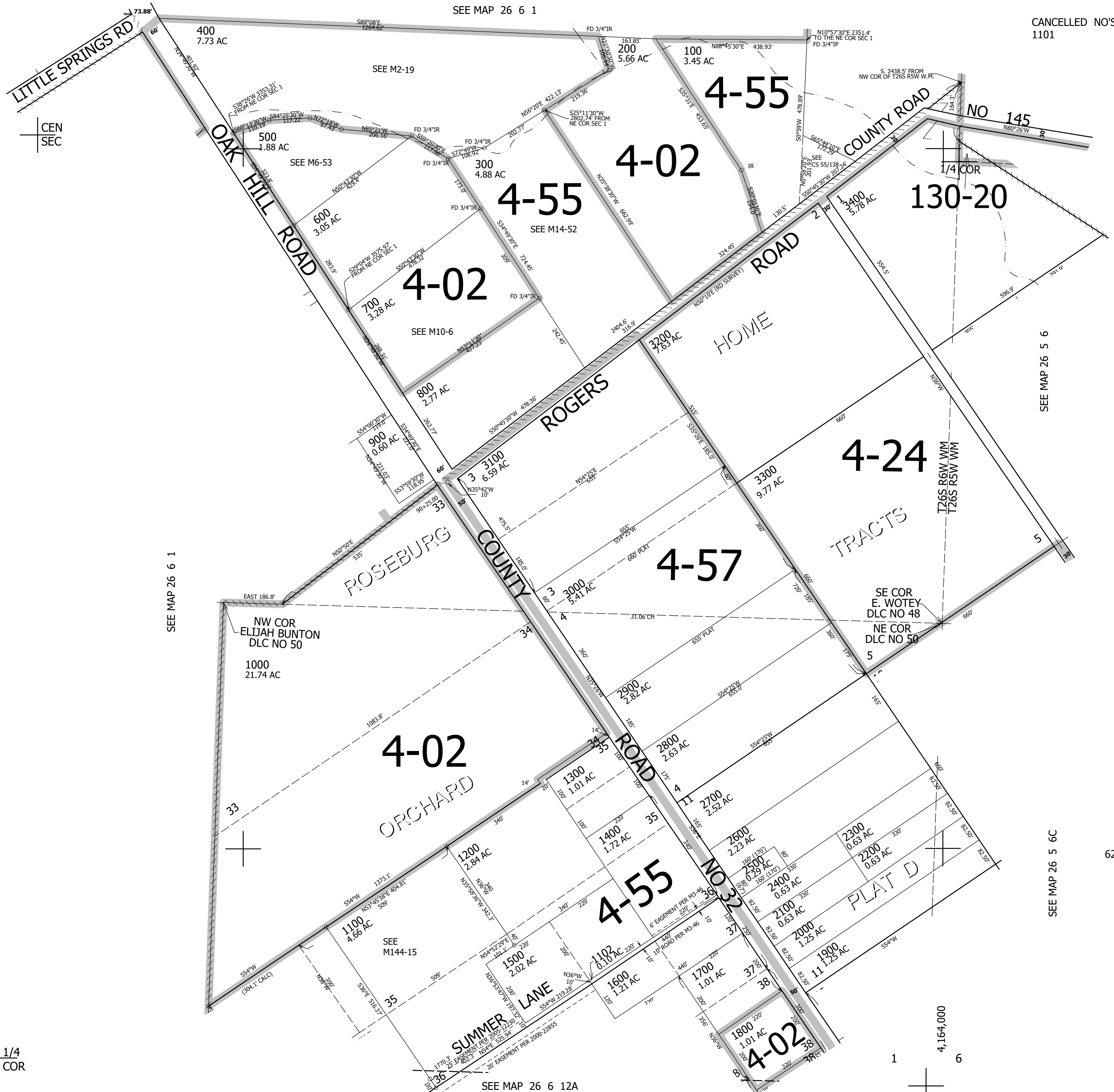
SE1/4 SEC.1 T.26S. R.6W. W.M.
DOUGLAS COUNTY

REVISED ON
5-11-21

26 6 1D

1" = 200'

CANCELLED NO'S
1101



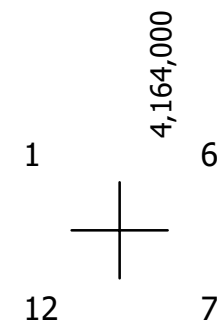
SEE MAP 26 6 1

SEE MAP 26 5 6

SEE MAP 26 5 6C

620,000

1/4
COR



SEE MAP 26 6 12A

26 6 1D