

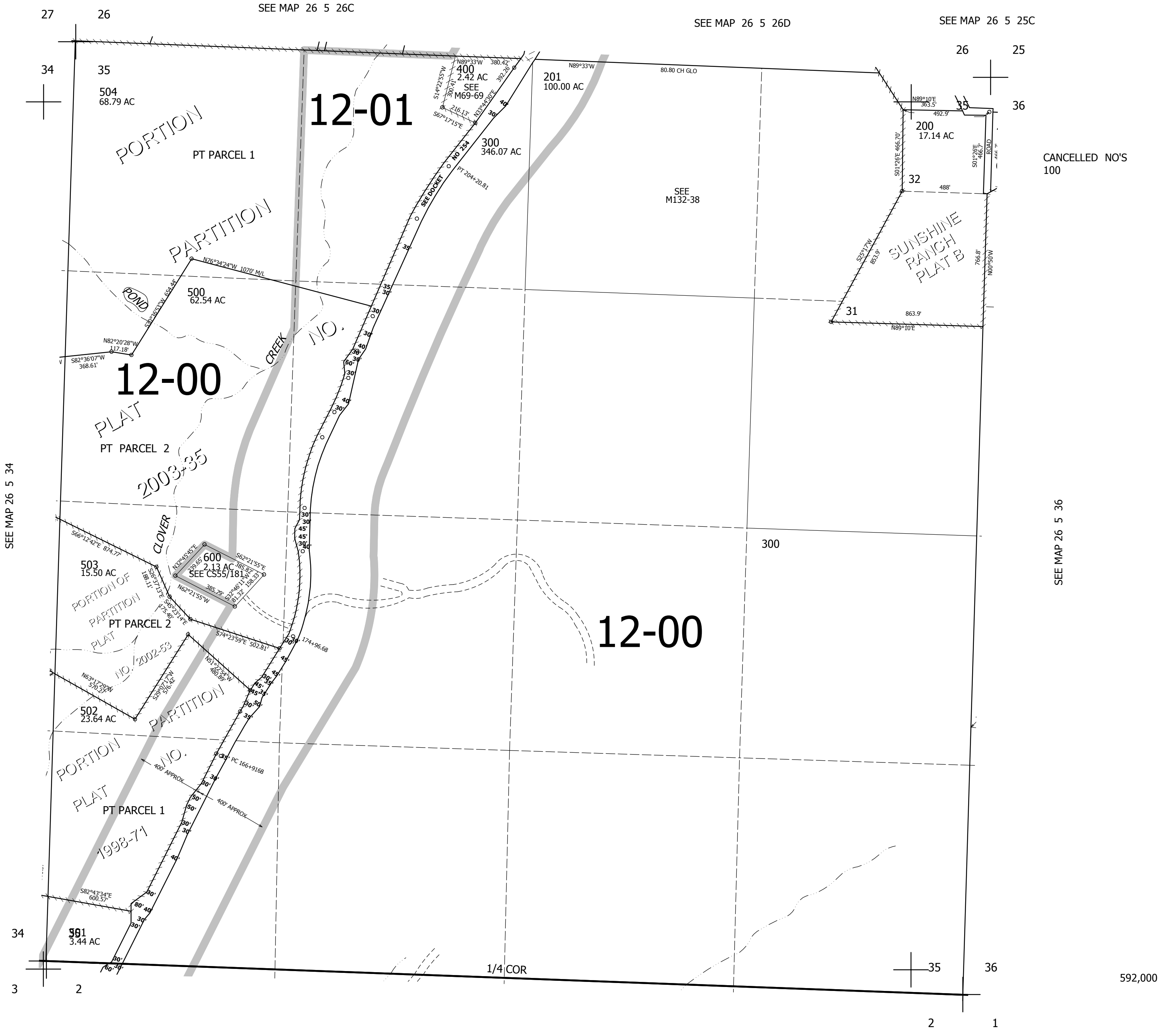
THIS MAP WAS PREPARED FOR ASSESSMENT PURPOSE ONLY.

SEC.35 T.26S. R.5W. W.M.
DOUGLAS COUNTY

1" = 400'

REVISED ON
5-13-03

26 5 35



CANCELLED NO'S
100

SEE MAP 26 5 36

SEE MAP 26 5 34

SEE MAP 27 5 2

4,189,500

592,000

26 5 35