

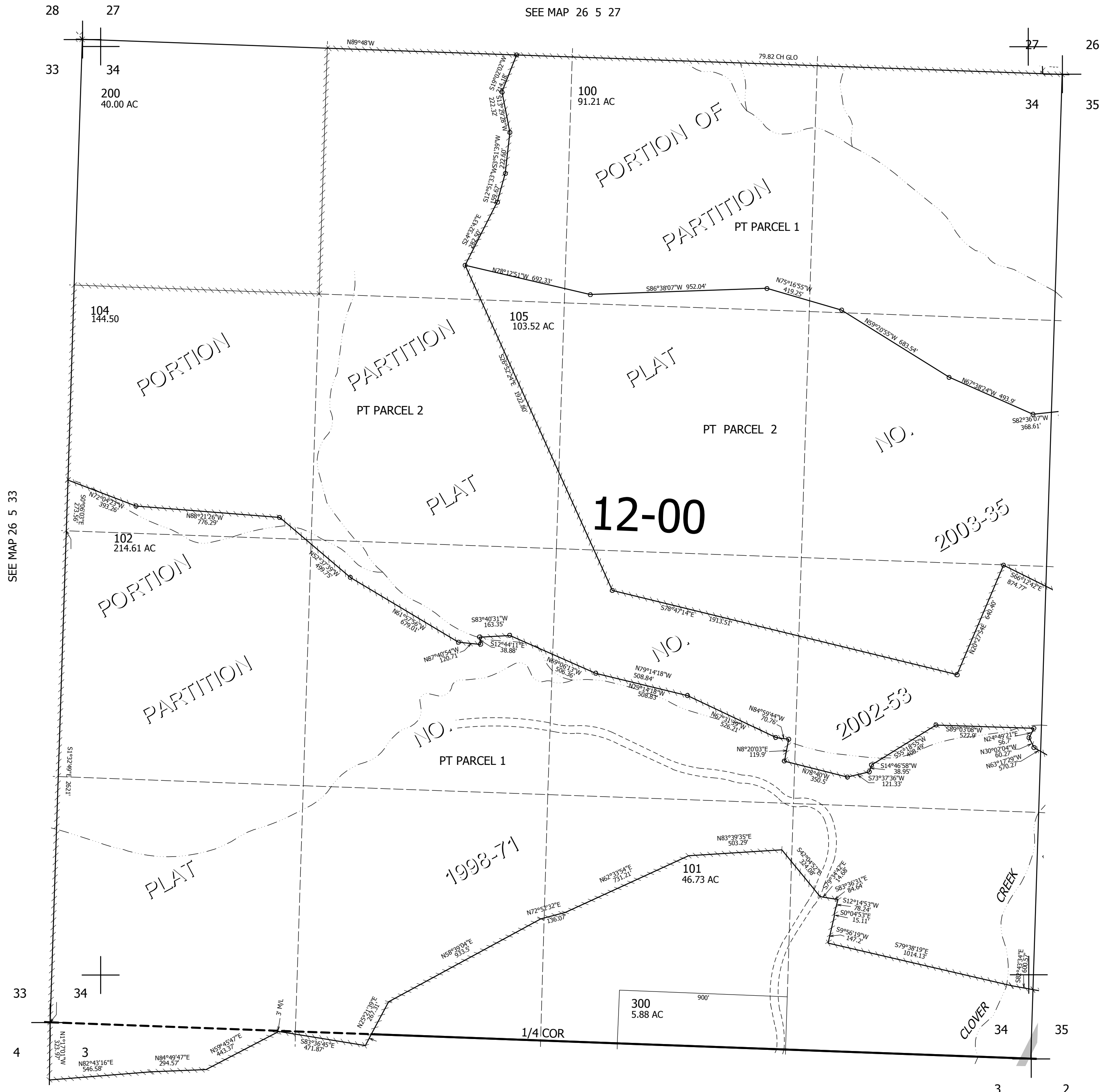
THIS MAP WAS PREPARED FOR ASSESSMENT PURPOSE ONLY.

SEC.34 T.26S. R.5W. W.M. DOUGLAS COUNTY

1" = 400'

REVISED ON
5-13-03

26 5 34



SEE MAP 26 5 27

SEE MAP 26 5 33

CANCELLED NO'S
103

SEE MAP 26 5 35

SEE MAP 27 5 3

592,500

4,184,500

26 5 34