

THIS MAP WAS PREPARED FOR ASSESSMENT PURPOSE ONLY.

SW1/4 SEC.32 T.26S. R.5W. W.M.
DOUGLAS COUNTY
1" = 200'

REVISED ON
6-7-11

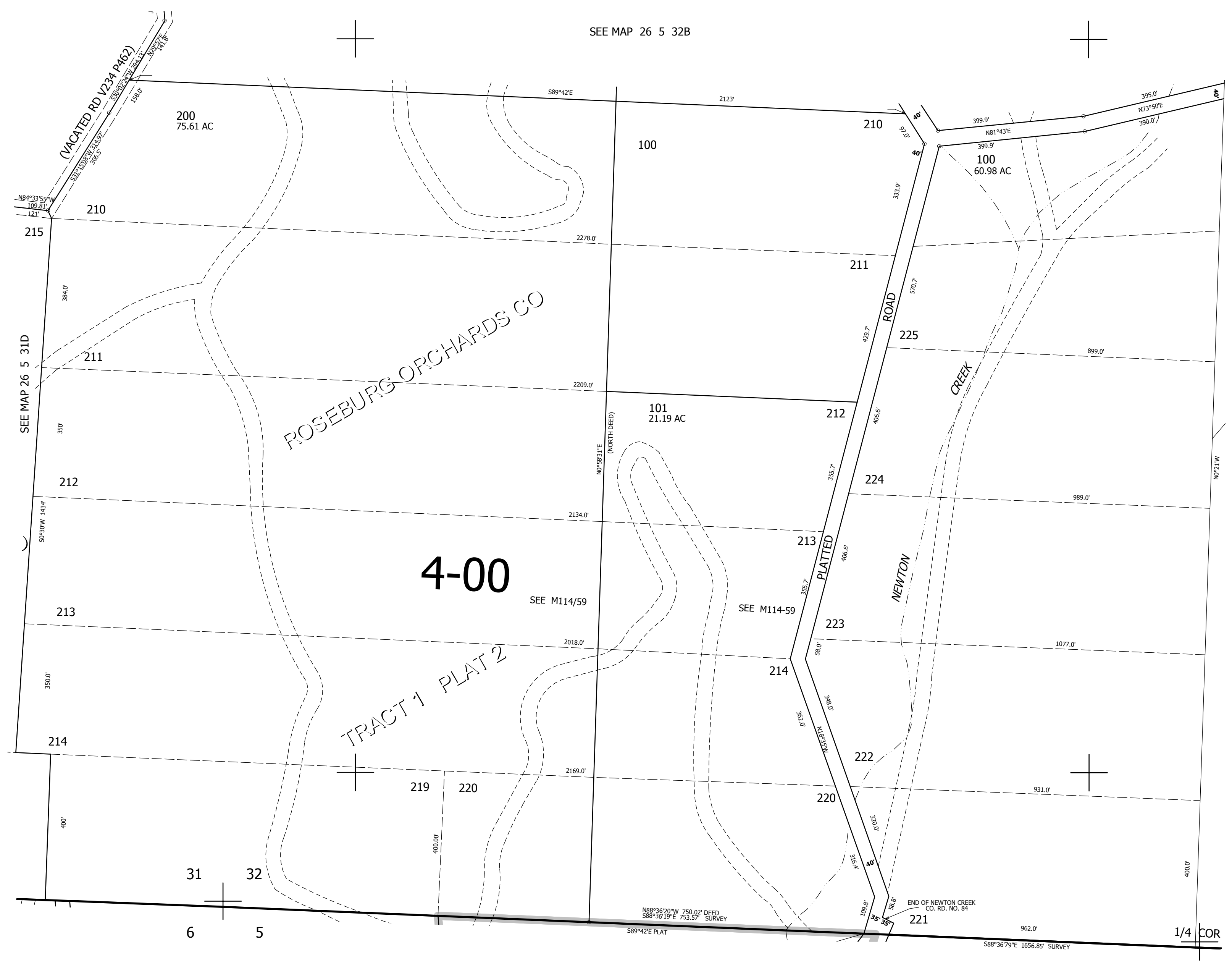
26 5 32C

1/4
COR

CEN
SEC

CANCELLED NO'S
100A1

SEE MAP 26 5 32B



SEE MAP 26 5 32

593,000

SEE MAP 27 5 5B

4,171,000

26 5 32C