

THIS MAP WAS PREPARED FOR ASSESSMENT PURPOSE ONLY.

Upper Left:
123°20'25"W 43°16'N
4164975E 595976N ft

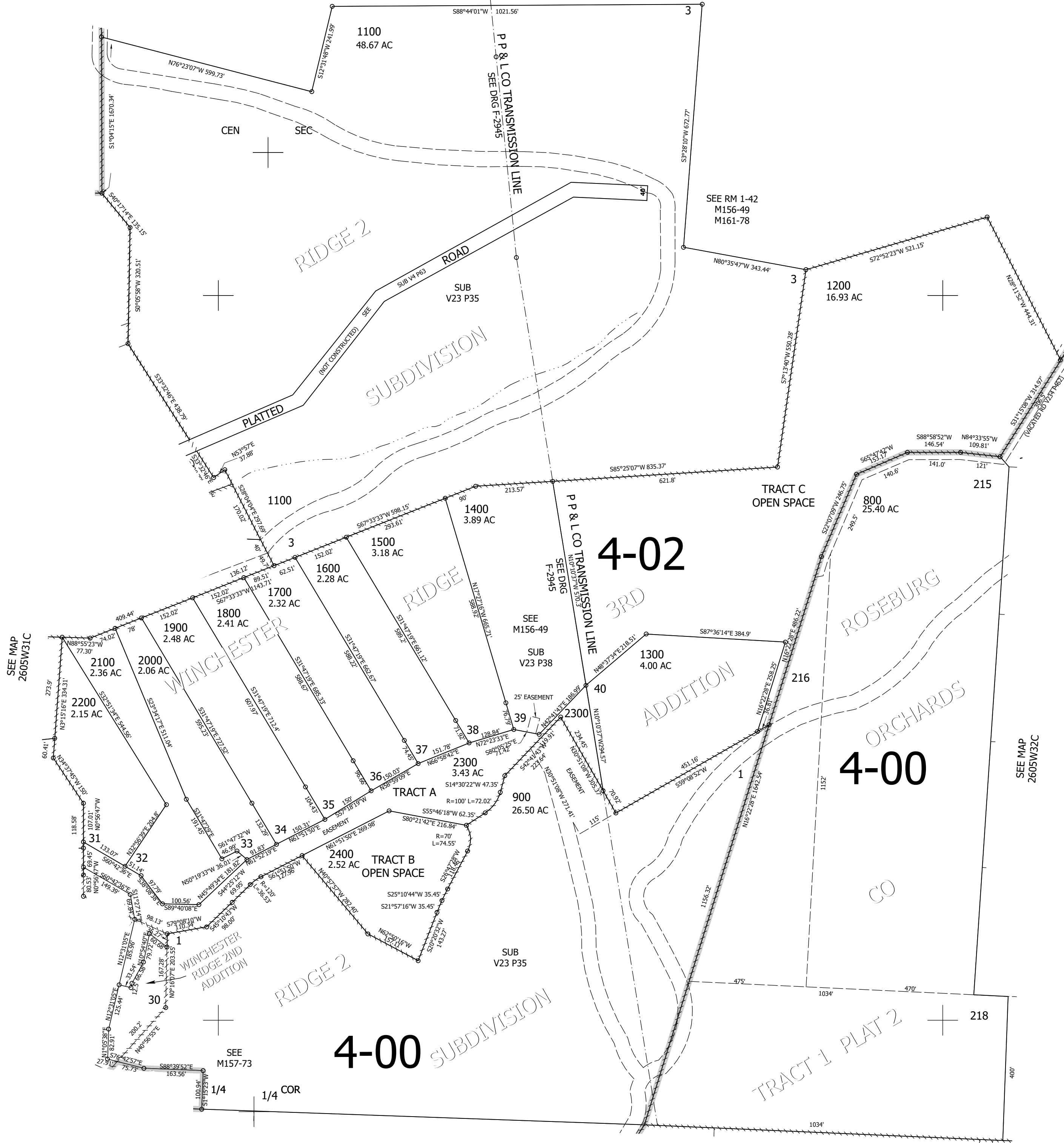
SE1/4 SEC.31 T.26S. R.05W. W.M.
DOUGLAS COUNTY

1" = 200'
SEE MAP
2605W31

Date Exported 2024-02-08

260531D

CANCELLED NOS:
200 THRU 701
801 100 1000
901 2301



1/4 COR

SEE MAP
2605W31C

SEE MAP
2605W32C

SEE MAP
2705W06

SEE
M157-73

TRACT 1 PLAT 2

31

32

260531D

Lower Right:
123°19'30"W 43°15'27"N
4168900E 592499N ft