

THIS MAP WAS PREPARED FOR ASSESSMENT PURPOSE ONLY.

SW1/4 SEC.31 T.26S. R.5W. W.M.
DOUGLAS COUNTY
1" = 200'

REVISED ON
3-2-21

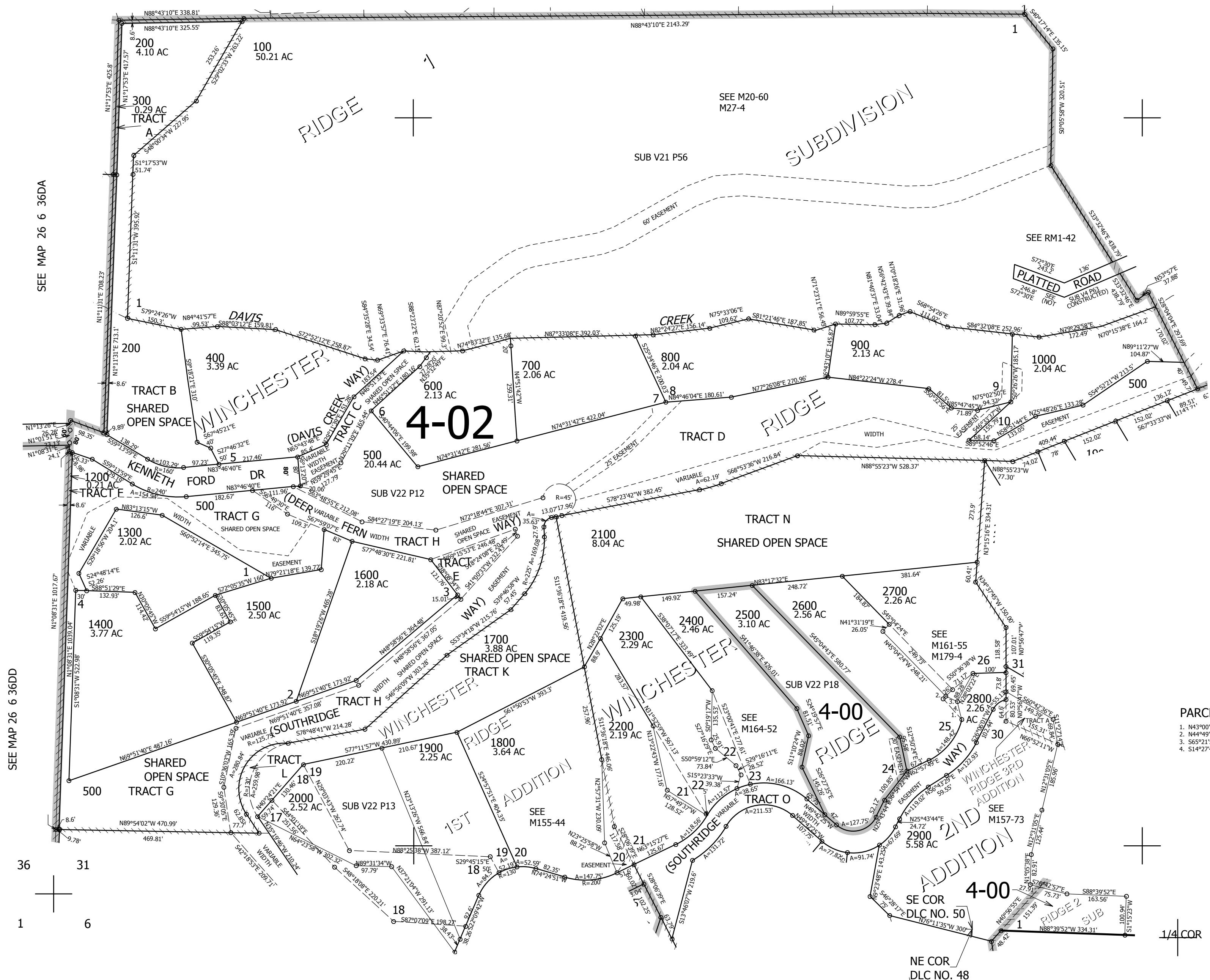
26 5 31C

1/4 COR

SEE MAP 26 5 31

CEN SEC

CANCELLED NO'S
1801 1901 2001
2002 2201 2601
2801 1100 2301
2901 2902 2802



SEE MAP 26 6 36DA

SEE MAP 26 6 36DD

SEE MAP 26 5 31D

PARCEL 2600
1. N43°00'13"W 75.86'
2. N44°49'54"E 10.41'
3. S65°21'55"E 35.17'
4. S14°27'44"E 49.77'

593,000

SEE MAP 27 5 6B

4,166,000

26 5 31C