

THIS MAP WAS PREPARED FOR ASSESSMENT PURPOSE ONLY.

Upper Left:
123°20'53"W 43°16'25"N
4162919E 598497N ft

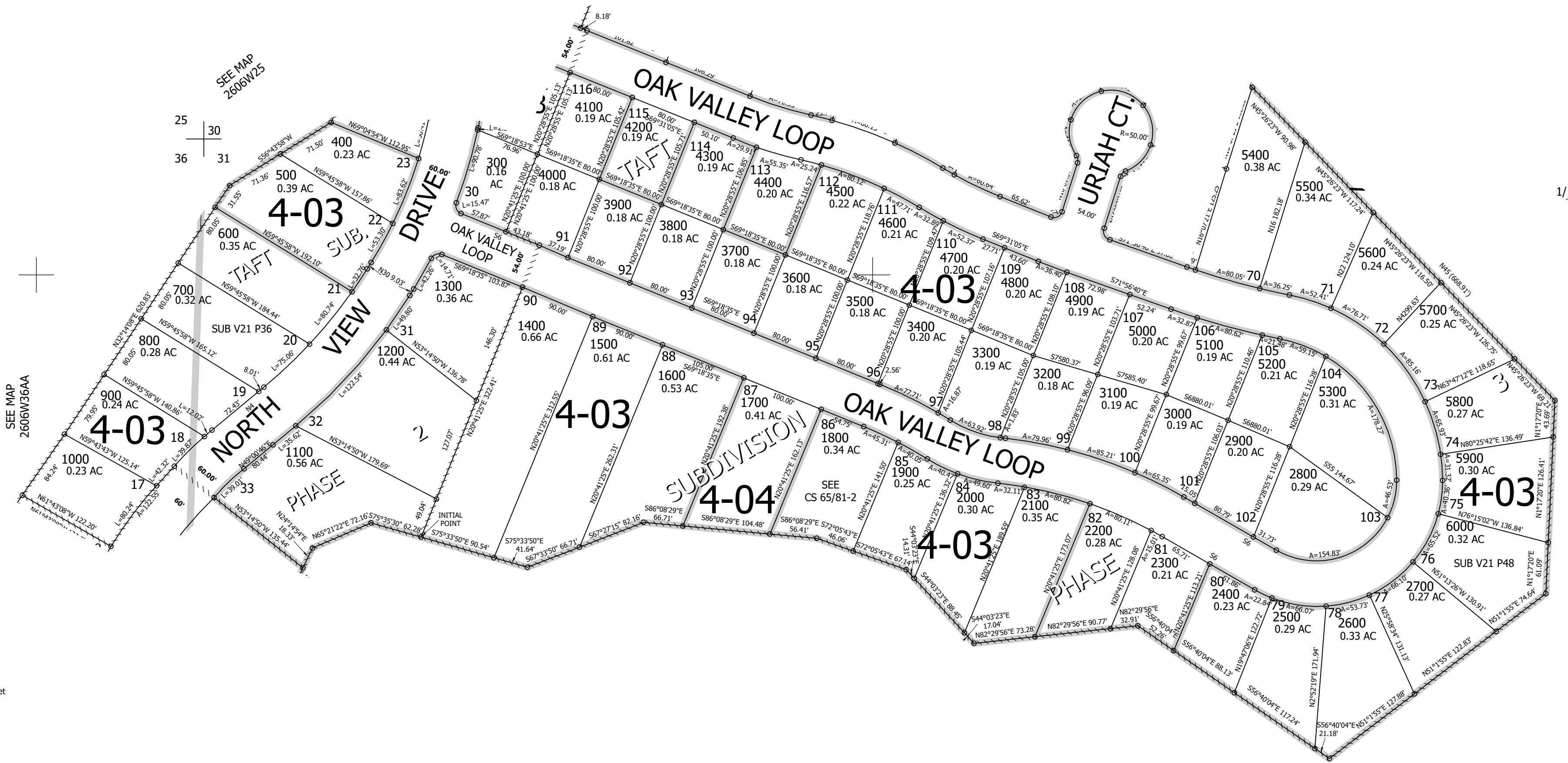
NW1/4 NW1/4 SEC.31 T.26S. R.05W. W.M.
DOUGLAS COUNTY
1" = 100'

Date Exported 2026-03-31

260531BB
Roseburg

CANCELLED NOS:
200 100

SEE MAP
2605W30CC



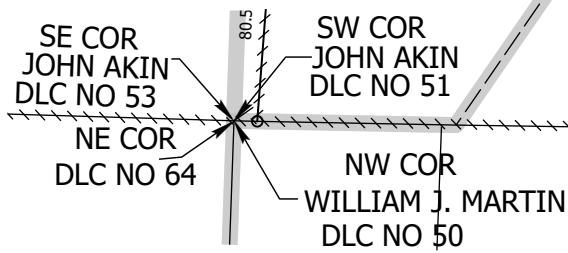
1/16 COR

SEE MAP
2606W36AA

SEE MAP
2606W25

SEE MAP
2605W31

Inset



1/16 COR

260531BB
Roseburg

Lower Right:
123°20'26"W 43°16'8"N
4164891E 596758N ft