

THIS MAP WAS PREPARED FOR ASSESSMENT PURPOSE ONLY.

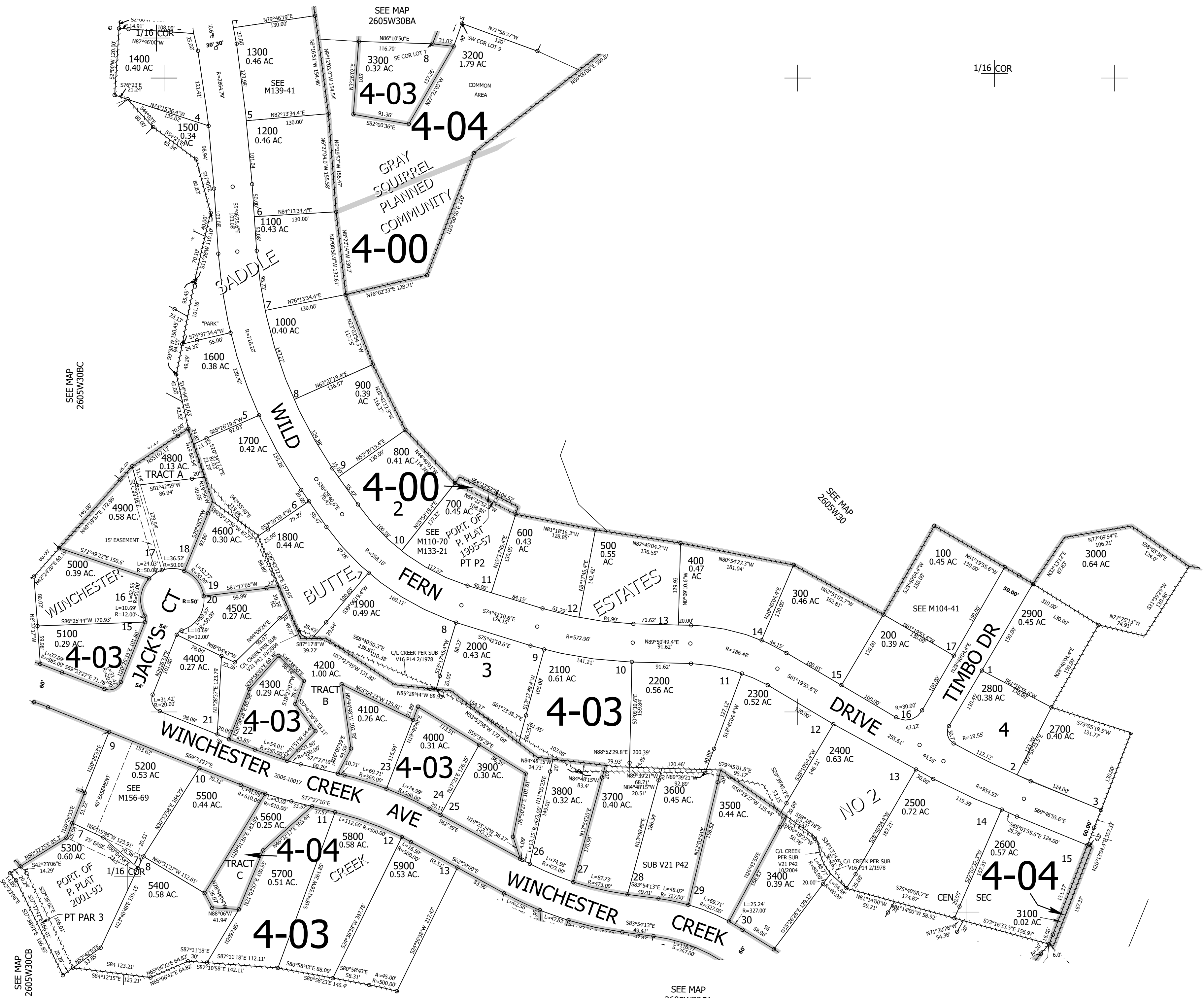
Upper Left:  
123°20'31"W 43°17'2"N  
4164699E 602201N ft

SE1/4 NW1/4 SEC.30 T.26S. R.05W. W.M.  
DOUGLAS COUNTY  
1" = 100'

Date Exported 2026-03-09

260530BD  
Roseburg

CANCELLED NOS:  
5301 4700



SEE MAP  
2605W30

SEE MAP  
2605W30CA

260530BD  
Roseburg

Lower Right:  
123°20'4"W 43°16'45"N  
4166671E 600462N ft