

THIS MAP WAS PREPARED FOR ASSESSMENT PURPOSE ONLY.

SW1/4 NW1/4 SEC.30 T.26S. R.5W. W.M.  
DOUGLAS COUNTY

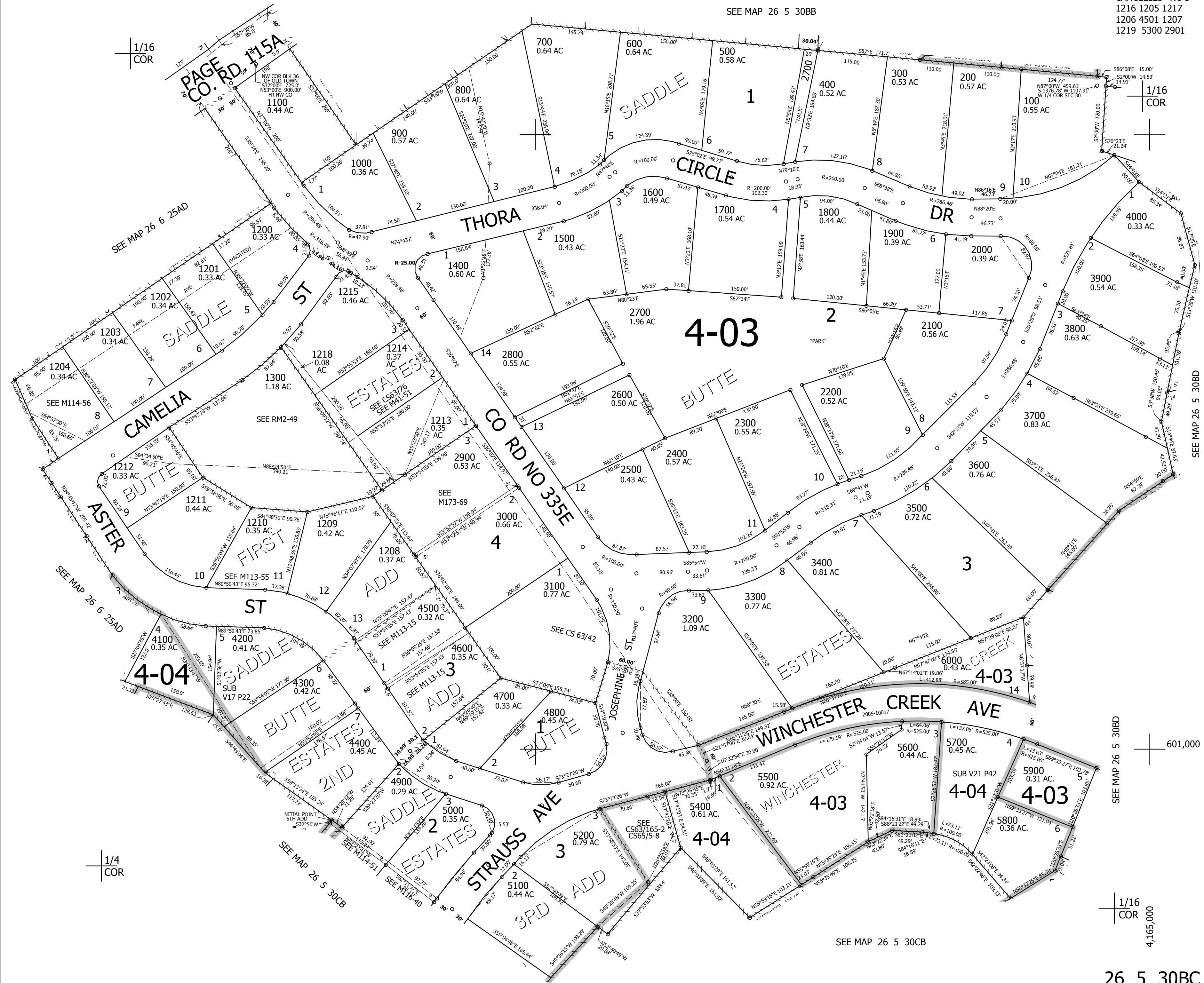
REVISED ON  
11-14-17

26 5 30BC

1" = 100'

CANCELLED NO'S  
1216 1205 1217  
1206 4501 1207  
1219 5300 2901

SEE MAP 26 5 30BB



1/16 COR

1/16 COR

SEE MAP 26 6 25AD

SEE M114-56

SEE MAP 26 6 25AD

1/4 COR

SEE MAP 26 5 30CB

SEE MAP 26 5 30CB

601,000

1/16 COR

4,165,000

26 5 30BC